

# The Kingsclere Tower



**February 2022**

**Your Village Magazine**

# The Kingsclere Tower

EDITORS: Sarah Hewitt, Nicki Lee and Mike Stokoe  
ADVERTISING: Brian Elborn b.elborn345@btinternet.com ☎298704  
DISTRIBUTION: Brian Elborn ☎298704  
ASSEMBLY: Andrew Kitch ☎299743  
PRINTERS: Kingsclere Design & Print Ltd  
LAYOUT/COVER: Steven Gaines

**A very warm welcome to first edition of the Kingsclere Tower in 2022!**

May the year bring us those joys of village life we have missed recently.

Many people have found an interest in family history during the Covid lockdown. Something to gladden their hearts will be the publication last month of the 1921 census.

This census means that we can find out where our parents and grandparents were living shortly after the 1<sup>st</sup> World War. So much had changed since the previous census in 1911, partly the result of war and the Influenza epidemic of 1918-19. Lives had been utterly altered. Where was your family and what were they doing? It's all there!

You can find your family at [findmypast.co.uk](http://findmypast.co.uk) and look for the 1921 census but be aware each record downloaded will cost you £2.50 or £3.50 for an actual copy of the census return.

**The Editor**

Neither the Editor, nor the Management Committee accept responsibility for the opinions expressed or the goods and services advertised in the Kingsclere Tower.

**To all "Tower" Contributors**

Copy for **March** to the Editor at 3 Blue Meadow, Garrett Close.  
or [kingscleretower@gmail.com](mailto:kingscleretower@gmail.com)

**NOT LATER THAN 12th February.**

**Will ALL contributors please include full name  
& home phone number/e-mail address.**

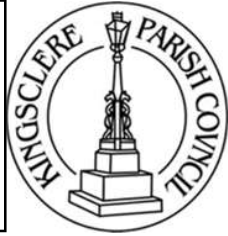
## KINGSCLERE PARISH COUNCIL

**Chairman:** Cllr John Sawyer (297221)

**email:** [clerk@kingsclere-pc.org.uk](mailto:clerk@kingsclere-pc.org.uk)

**Telephone:** 01635 298634

**Office:** 37 George Street, Kingsclere RG20 5NH



**WELCOME TO NEW COUNCILLORS** – It is with great pleasure that we welcome David Conquest and Simon Jones to the Parish Council. They are both residents of the village and bring with them skills and interests that will be valuable additions. We thank them for volunteering their time for council service and look forward to working with them.

Cllr John Sawyer - Chairman

**FIRES IN THE ORCHARD / ALLOTMENT AREAS** – It is sad to note that the tree guards from the trees in the orchard are being taken and used to start fires in this area. If you have cause to walk in these areas, please be vigilant and report any offenders and fires to 101. Both our PSCO and our Basingstoke Community Safety Patrol Officer are aware and will increase visits to the area at various times.

### GARDEN WASTE UPDATE

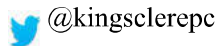
from BDBC Website Monday 10th January 2022

BDBC is sorry to report that owing to staff absences, they have taken the difficult decision to suspend the fortnightly garden waste collection service to enable bin collection crews to focus on the core waste and recycling services where there is currently a backlog of collections from the Christmas and New Year period. Collections will not take place from Monday 10th January. BDBC understand that this suspension will be frustrating for some of their customers, particularly those wanting to have their real Christmas tree collected. They will be collected when the service resumes or can be taken to one of the 22 recycling sites across the Borough.

BDBC hope to reinstate the service as soon as they can when BDBC can be confident in restarting a reliable service. BDBC will review the situation regularly and will provide updates to customers on BDBC's website.

Garden waste customers will not miss out on collections they have paid for as they will have their contracts extended taking their subscriptions further into 2022

The Parish website [www.kingsclere-pc.org.uk](http://www.kingsclere-pc.org.uk)



[facebook.com/KingsclereParishCouncil](https://facebook.com/KingsclereParishCouncil)

**GREEN WHEELY BINS & GLASS RECYCLING** - the collection dates are: Wednesday 9th February, Wednesday 23rd February and Wednesday 9th March 2022.

**CHRISTMAS LIGHTS** - Although the Christmas lights will be long gone by the time this issue is published, KPC would like to express to all involved, thanks once again for the lovely display of lights in the trees and the star projection on the Church wall. The lights cheered everyone up and were very welcome considering the ongoing difficult and at times, demoralising restrictions we still find ourselves living in.

**THE CEMETERY** – a polite reminder regarding dogs in the Cemetery. KPC has received a few comments and concerns from residents about people walking through the ground with dogs off leads. Please ensure that any dogs in the cemetery are on leads and under control. Unbelievably KPC has also received reports of people cycling through the Cemetery from the Fieldgate Centre. Please be considerate of those visiting their loved ones and remember that the Cemetery is for quiet reflection and remembrance; there are numerous other spaces available in the village for recreation.

**CEMETERY MEMORIAL SAFETY CHECKS**– Checks will be carried out during January and February by a qualified inspector. Every effort will be made to contact relatives and stone masons, should unsafe memorials be detected. The laying down of memorials will be as a last resort but may be necessary in urgent instances.

**KEY FOUND** – A key was found on Newbury Road at the beginning of December. Please contact the Parish Office if you have lost one.

**NEXT PARISH COUNCIL MEETING** – will be at **7.30pm on Monday 28th February 2022**, in the Village Club, (unless otherwise notified). We welcome the attendance of all parishioners at our meetings and anyone who wishes to raise any matters of concern will be given the opportunity to do so.

**COVID 19** - We continue to be aware of the ever-changing situation regarding the Covid rules. Please respect others by always wearing your mask and sanitising your hands on arrival at the meeting, chairs will be spaced out as much as practicably possible. Please keep an eye on social media and the website in case rules change after writing this article and the meeting arrangements need to change.



## KINGSCLERE NEIGHBOURHOOD PLAN

In October we advised residents that Basingstoke & Deane Borough Council had commenced a revision of the Local Plan which would incorporate the increased housing requirement imposed by central Government.

To date the revised plan has yet to be issued for public consultation but the Parish Council have been in contact with the Borough over the indicated allocation of 175 additional homes for Kingsclere. Percentage wise this is the third highest increase for a rural settlement within the Borough. The PC believe this is disproportionate and will be taking steps to get this number reduced.

In the meantime, the Vestry Group, who wish to develop Porch Farm, have been in discussions with the Local Planning Department at B&DBC and have recently met with the Parish Council's Planning Panel.

The PC are of the opinion that development at Porch Farm is premature as the revised Local Plan and subsequently revised Neighbourhood Plan have yet to be consulted on and agreed.

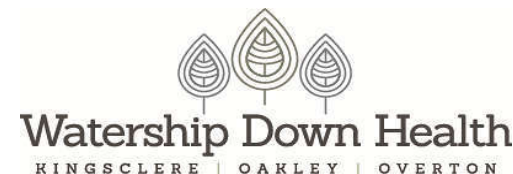
Nevertheless, the developers are keen to press ahead so residents can expect a consultation with the developers within the next few months. The Parish Council urge all residents to keep up to date with information published by B&DBC and the Parish Council, including Parish Council minutes which can be found on the Parish Council website, and please participate in the consultations when they occur.

**Cllr. Sue Adams** [Cllr.sue.adams@kingsclere-pc.org.uk](mailto:Cllr.sue.adams@kingsclere-pc.org.uk)

### 1921 Kingsclere Census Facts

Top six most common surnames in the Kingsclere District

Smith	169	Taylor	51
Butler	114	Hiscock	50
Cooper	52	Hutchins	50



### New GP Partner for Watership Down Health

We are delighted to confirm that Dr Kate Hughes who has been a salaried GP with us since 2019 is now a GP Partner. Kate has a wide range of experience and we are looking forward to taking patient services forward with Kate.

### Covid Vaccination programme update

We are continuing to provide updates via our web site and Facebook page. We thank our patients who have come forward for vaccinations. A number of walk-in clinics are now being advertised via our web site and Facebook pages and via a MJOG Text invitation.

### On-line services

Many patients choose to have an on-line account to enable them to be able to manage their health records, prescription requests, messages to the practice etc. 9,523 patients now have an on-line account which is 74% of eligible patients.

Patients who do not wish to have an on-line account but who would like to order their repeat prescriptions without phoning, can do so via our web site: [www.watershipdownhealth.com](http://www.watershipdownhealth.com)

Kingsclere Medical Practice has its own dispensary which is run by the practice but other local pharmacies are Kingsclere Pharmacy, Swan Street, RG20 5PP; Overton Pharmacy, 4 Winchester Street, RG25 3HS and Oakley Pharmacy, 22c Oakley Lane, RG23 7JY

### Smoking Cessation (Smoke Free Hampshire)

Why not make 2022 the year you stop smoking for good? It is more important than ever for smokers to quit and you are 3x more likely to quit with help from us than going it alone. Call 01264 563039 or text QUIT to 66777.





The Fieldgate Centre is run by Kingsclere Community Association, a charity (No 1168366). All residents of Kingsclere over 18 are automatically members of the association, an organisation that relies on volunteers to run it. Be part of it, your support makes a difference.

It bodes well for the coming year to be welcoming back all of our regular classes as well as the social groups and organisations that visit regularly. Many of you are booking family gatherings and celebrations with us, catching up with fun postponed from last year. We have the perfect venue, with plenty of airy space for business meetings, partying, chatting and performing!

**Kingsclere Community Association Annual General Meeting**  
on Wednesday 16th February at 7.30pm  
All welcome, either in person or via Zoom (link to be advised).

#### Other events in February

Greener Kingsclere Market Sunday 13th 10-12.30pm  
Monthly Meet-Up Tuesday 15th 2.30-4.30pm

#### Regular Classes

Mon	Jo Lewis Pilates	SongTree Music
Tue	Jo Lewis Pilates	Clubbercise
Wed	Slimming World	
Thu	Jo Lewis Pilates	Short Mat Bowls Ceroc
Fri	Jo Lewis Pilates	

#### Ceroc Workshops

Saturday 5th Smooth Links followed by evening Twisted Freestyle  
Sunday 27th FREE Beginners Day

Before arrival we advise that you check for any changes to the class or event timetable. Please use the sanitising hand gel provided and wear a face mask whilst in the building (except during exercise, eating/drinking). Please also comply with the current UK Government's Covid advice.

[www.thefieldgatecentre.co.uk](http://www.thefieldgatecentre.co.uk) 01635 298497  
[fieldgatecentre@outlook.com](mailto:fieldgatecentre@outlook.com)



At 7.30pm (doors open 7.00pm) at the Village Club, George Street.

**Saturday, 12th February, 2022**

#### Suspicion

(1941 – Mystery/Thriller -A- 99min)

A shy young heiress marries a charming gentleman and soon begins to suspect he is not all that he seems. Directed by Alfred Hitchcock.  
Starring Cary Grant and Joan Fontaine.

Next month:

**Saturday, 12th March**

**The Personal History of David Copperfield (2019)**

Kingsclere Film Club welcomes guests at £7.50, subject to space.

New members welcome at any time.

**For further information call John Sawyer (Chairman) 297221  
or Diana Tait (Membership Sec) 298494**

## Kingsclere Community Library

### Have your say!

We have funds to purchase new books and would like **YOUR** input on expanding our collection. Please stop in the library and give us your ideas for authors or subjects you'd like to see more of!



Why not celebrate St Valentine's Day with a 'blind date with a book'? Some of our books are wrapped up with just a brief description to choose from – a great way to try something new!!



**HOURS** Please note: Our Thursday evening opening was not popular so we have reverted to our previous hours.

Tuesday & Thursday 1.00pm - 5.30pm  
Saturday 10.00am - 1.00pm

**Nicki Lee, our new phone number: 01635 297464**

**[Kingsclerelibrary@gmail.com](mailto:Kingsclerelibrary@gmail.com) [www.kingsclerelibrary.co.uk](http://www.kingsclerelibrary.co.uk)**





## KINGSCLERE VILLAGE CLUB

Est. 1921

100 years and counting ...

We hope you have all had a good start to 2022. A **big thank** you to those lovely people who gave a donation to the Club when they booked via

WeGotTickets. Unfortunately, we do not get a breakdown of who has donated so we cannot thank you personally. Also, thanks to those who have donated through AmazonSmile. Much appreciated!

### Christmas Market

Another big thank you to all the stall holders, shoppers and the Kingsclere Singers who made our Christmas Market such a success. A lot of hard work behind the scenes led to a great atmosphere and an enjoyable event for all. Look out for another market later in the year with more high-quality goods on offer.



### Community Café



Everyone is welcome at the Community Café which is held monthly, usually on the **last Saturday of the month from 10am to 2pm**. There is a theme such as a quiz, craft or flower arranging and table-top games are also available. If you haven't dropped in yet for a cuppa and a chat, pop in on **Saturday 26th February** - you are sure of a warm welcome.

Look out for more details on the village noticeboards and social media. And thanks to those volunteers who set up, serve, shop, make cake and tidy away. Special thanks to our quiz-master, Grant. **We couldn't do it without you!**

There seem to be a lot of 'thank yous' this month but we could not continue without the help of a wide range of people. If you would like to help out in any way, please contact us.

**Helen 297390 or [events@kingsclerevillageclub.co.uk](mailto:events@kingsclerevillageclub.co.uk)**

**Website <http://www.kingsclerevillageclub.co.uk>**

**Facebook <https://www.facebook.com/kingsclerevillageclub>**

### 1921 Census Facts

Three most common first names for men in the Kingsclere Area:

William (102) George (88) Charles (71)

Three most common first names for women in the Kingsclere Area:

Elizabeth (58) Annie (54) Mary (40)

## KINGSCLERE AND HEADLEY WOODLANDS W.I.



We ended 2021 on a very happy note as far as our WI was concerned with a party atmosphere for our birthday ladies at our last meeting of the year. Everyone enjoyed the afternoon including four guests from our sister institutes at Burghclere and East Woodhay. Members are very happy to meet once again for a good chat and food!

Into 2022, it's almost back to normal as we look forward to welcoming **Dr Paul Sievers from Newbury on Wednesday 9th February 1.45pm in the Village Club.**

Dr Sievers will be telling us of his experiences in the Himalayas, he was the accompanying medic on the trip. Dr Sievers is an accomplished photographer and his talk will be illustrated by slides.

Also at our February meeting, we will be discussing the short list of five WI resolutions for 2022 ready for the selected one to go forward to the annual meeting to be held this year in Liverpool. The Women's Institute has passed many resolutions over the years going back to the well-known one 'Keep Britain Tidy' in 1954 which became a national campaign in 1955, through to last year's one to 'Raise Awareness of Ovarian Cancer' which aimed to encourage more women to go for smear tests. Our participation in campaigns is just one of the many ways in which the WI are agents for change within our community.

We have welcomed four new members since we reopened last September so, why not come along and see what we are about? I'm sure that you won't be disappointed. Visitors pay just £2 per visit on two occasions; this will give you a taster and enable you to see how friendly we are. I look forward to welcoming more Kingsclere and district ladies to one of our meetings (or more if you like the look of us!).

**Margaret Geary. 297197**

### Kingsclere Tower Magazine

#### CAN YOU HELP?

We are looking for people to join the team editing the Tower. If you are familiar with the village and are confident using a computer, we can teach you the rest!

Please get in touch at [kingscleretower@gmail.com](mailto:kingscleretower@gmail.com)

We look forward to hearing from you. Thanks.

## Royal British Legion

As we enter a third year of uncertainty, one thing is certain, somewhere there are members of the Armed Forces community, from across the generations, who need the help and support of the Royal British Legion. Last year, the Royal British Legion was 100 years old. Its work is as valid and vital today as it was when it was formed.



The generosity of the people of Kingsclere and neighbouring communities as far out as Wootton Hill, helped the Kingsclere Branch of the Royal British Legion raise a very impressive £6147.10 for last year's Poppy Appeal. That money makes all the difference in helping the Legion continue its work, including here in Hampshire.

This year is one of commemoration. On Sunday 6th March, it will be the 100th anniversary of the Kingsclere Branch of the Legion. The Branch hopes to hold some form of suitable event. With the ever-changing landscape caused by Covid, plans have yet to be firmed up. Please keep an eye on the Community Facebook page or contact me from mid-February for more information.

It is hard to believe that this year also marks 40 years since the Falklands War. As a child, I remember watching the news as the Fleet set sail, and over the weeks that followed, the stories of heroism and horror that came from distant shores. Conflict was no longer something that happened decades earlier. Sadly conflict and its effects, seen and unseen, continue today, which is why the Royal British Legion and Remembrance are so important.

The Kingsclere Branch is made up of a small group of individuals, each who has their own reasons for wanting to be there and over two thirds of whom have no military background. We would love to see more people getting involved and bringing fresh ideas for fundraising. It's a great way to meet people and being involved in events can be fun and rewarding. There is very little commitment required throughout the year. If you'd like to know more, please contact me via

**Kingsclere.chairman@RBL.Community**

**Kate Oldershaw  
Chairman  
Kingsclere Royal British Legion.**

## The Church Pages

### Reflections

It was late evening and it had been an intense day. They were facing greater opposition than they expected. Jesus had taken them to a garden on the Mount of Olives, called Gethsemane, to pray. But they were mentally and physically spent and if you've ever tried praying when so exhausted, then you'll know how hard it is. Jesus, deeply distressed and troubled, begins to pray on the ground nearby pouring out his pain to God. Perhaps, they listen for a while but then can't fight the weariness and drift off to sleep. Jesus wakes them a few times asking them to pray but they are weak and so they sleep. When they wake the last time it's too late as Jesus is surrounded by a crowd armed with swords and clubs and arrested.

The disciples were clearly tired, but they failed to recognise how serious the situation was and how time was so short. Perhaps they thought that once they'd slept, they'd pray. But sadly, there wasn't and they missed the opportunity of praying with Jesus at such a difficult time for Him. Being there for Jesus was not a priority for them that evening. And that must have hurt.

And I guess we all know that feeling of letting someone down, of hurting someone and regretting it. But what's wonderful about Jesus is that He takes the hurt and rejection and He dies so that everyone who trusts Him can be forgiven of all the hurt and pain they've caused. He goes on loving those disciples giving them time after He has risen from the dead, preparing them for the life He called them to.

But as we think on that evening, what challenges me is, will I make faith a priority? Will I make the decision not to allow other things in life to get in the way? Will I listen to Jesus above the other voices that crowd in? Will I truly love Him as He loves me? And will I choose these things before it's too late?

Sadly, we're moving from our home here at the beginning of April (more on that next time). My encouragement to you is to not keep putting faith questions off, thinking you've got more time, but to make them a priority now. If you want to talk it through, please do get in contact soon.

**Blessings,  
Ben**





## Worship in our Churches February

Services in our churches during February will be as follows:

Thursday 3rd February	10.30am Morning Worship, St Mary's, Kingsclere	
Sunday 6th February	9.30am Holy Communion St Peter's, Headley	10.30am Holy Communion with Junior Church St Mary's, Kingsclere
Thursday 10th February	10.30am Morning Worship, St Mary's, Kingsclere	
Sunday 13th February	9.30am Morning Worship St Peter's, Headley	10.30am All-Age Worship St Mary's, Kingsclere
Thursday 17th February	10.30am Morning Worship, St Mary's, Kingsclere	
Sunday 20th February	9.30am Morning Worship St Paul's, Ashford Hill	10.30am Morning Worship with Junior Church St Mary's, Kingsclere
Thursday 24th February	10.30am Morning Worship, St Mary's, Kingsclere	
Sunday 27th February	9.30am Holy Communion St Paul's, Ashford Hill	10.30am Morning Worship with Junior Church St Mary's, Kingsclere

[www.stmaryskingsclere.co.uk](http://www.stmaryskingsclere.co.uk)

## Lighting up St. Mary's



The sight of St Mary's Church when it is floodlit is truly beautiful. Many people sponsor these lights (£12 per evening) to celebrate an occasion such as a birthday, wedding, anniversary, christening or some other special day in their lives.

To book, contact **Emma**, our Church Administrator on **07422 687125** or email [administrator@stmaryskingsclere.co.uk](mailto:administrator@stmaryskingsclere.co.uk)

### November

18th For Bill. Miss you, Chris

### December

21st Remembering Jean & Mervyn Hiller and so many happy Christmases.  
Rest in peace together, love from Susan, Julie and family.

26th Wishing my wife Julie a Happy Birthday, from Malcolm

### January

8th To celebrate and share the exciting news of the birth of EWAN ROY DAVIS. First Baby for James and Jessica Davis of Bexley, Ohio, USA and first Great Grandchild for Wendy Morgan. Welcome to God's wonderful world

30th In loving memory of Gloria Olariu-Stead born sleeping 30 January 2019. Always in the hearts of Oana, Michael, Emily, Vasile, Cornelia, Gina and Andrew.

### February

14th Remembering Lillums on her birthday

20th Remembering John David Wesson on his 90th Birthday. With love from Karen and Paul x x

## Kingsclere Methodist Church



Service Dates for February

Sunday 6th February- Jeff Britt

Sunday 13th February- Rev Andy Fitchett (Holy Communion)

Sunday 20th February- Rev Canon Jill Bentall

Sunday 27th February- Judith Davy-Cole

All. Services begin at 10.00am and all are welcome

**Christine Westcombe**



## Friends of St Mary's Kingsclere Ltd

The hardy souls who joined us in adverse weather conditions for the Village Walk on 27th December were particularly appreciative of the delicious food greeting their return, kindly donated by Honesty, the Village Butcher, and The Bel and Dragon, to whom our warm thanks.



19. Kingsclere Church in 1846.

Given the continuing uncertainties about the very rapid transmission of the Covid Omicron variant, and some difficulty in the supply of Lateral Flow Tests, we decided, with regret, to defer the popular Quiz Night normally held in January. We hope to be able to reschedule this later in the year when hopefully these concerns may be resolved.

The normal sequence of the Biennial Art Exhibition, kindly organized by Jane Baikie, has also been disrupted by the pandemic, but we look forward to it being held from **7-10th April**, starting with the enjoyable Friends' Preview Evening with wine and nibbles. Then on **Saturday 21st May**, we shall again be joining forces with Kingsclere Gardening Association for the Plant Sale in the Churchyard, offering a good selection of perennials and vegetables. If you are sowing or splitting plants in the coming months, we should very much welcome any you can spare; please contact **Jane Royle on 297430**. You will see elsewhere in this issue that FOSM are now taking on the administration of the fund-raising 200 Club formerly run by the PCC.

**Peter Turner, Chairman**

### Saturday Coffee

Fresh brewed coffee, tea and delicious home made cakes.

All welcome – please do pop in!

**10.00-12.00**

in the Kingsmill Room, St Mary's Church

**February 5<sup>th</sup>, 12<sup>th</sup> and 19<sup>th</sup>**

Volunteers welcome – if you're able to pour coffee, welcome people or make cakes occasionally, please do contact the church office on **01635 299528**

## 200 200 200 200 200 200 **FOSM 200 Club** 200 200 200 200 200

Friends of St Mary's have now taken on the administration of the 200 Club, which raises funds towards the repair and restoration of the Church fabric. Our thanks to Andrew and Pam Kitch for their recent stewardship.

The January Draw winner was **Sue Grove-White – No. 9.**

**Congratulations, Sue.**

The February Draw will take place at The Crown at approximately 7 pm on Tuesday 8th February  
**Jane Royle jane.b.royle@gmail.com 01635 297430**

## Whitchurch Silk Mill

Success in 2021!

Despite all the challenges thrown at us in 2021 we have much to celebrate, not least the roughly 1500 hours we've calculated our wonderful volunteers gave us. Thank you to everyone who helped us, either by volunteering time and skills, by donating money, by visiting Mill exhibitions and attending events, or by patronising our café and shop. Where would we be without you?



### Have You Ever Thought about Volunteering?

Volunteers are essential to the running and sustainability of the Mill, and our volunteer team includes people of all ages involved in a variety of roles. Some were already experts in their field when they joined us, others have enjoyed learning new skills or just meeting new people, and it's not all about work: We meet as a team monthly for tea, coffee and cake and hold two 'thank you' events per year. If you can spare just an odd hour here and there, or can commit to a regular day per week, or just want to find out a little more, our Volunteer Co-ordinator Laney Thorpe would love to hear from you at [laney.thorpe@whitchurchsilkmill.org.uk](mailto:laney.thorpe@whitchurchsilkmill.org.uk).

### February 2022 Half Term Activities for Families

On Tuesday 22nd February The BRICK People will be leading LEGO sessions at the Mill. These need to be booked, so please check our website for times and to make a booking. There will be a Make and Take session on Thursday 24th February, 10.30am to 12.30pm, free with admission or family membership.



## Kingsclere CE Primary School

We have kicked off 2022 with a big bang here at Kingsclere CE Primary with lots of visitors and exciting events planned throughout the term. Our children have returned from the school holidays with renewed enthusiasm and plenty of energy, a delight to have the whole school return compared with this time last year.

Staff continue to inspire pupils with engaging learning tasks, venturing outside and transforming classrooms into wonder-worlds to explore. Our Year R- Year 2 pupils have received a fantastic visit from a STEM ambassador, exploring virtual reality equipment and building structures. It is important to us to engage pupils with a wide variety of activities to create aspirational futures for them.

Our Year 3 and Year 4 pupils have been exploring the Ukulele this term, impressing us all with their talents. Their Enquiry question also allows them to explore cave paintings, designing and creating their own to establish whether they would like to have lived during the Iron Age or the Stone Age by comparing the two time periods.

Our Year 5 & Year 6 pupils conducted a space launch to establish whether one day we will actually be able to live on Mars! They explored the qualities needed to be a successful astronaut and are currently working in teams to build a suitable rocket, considering the science of air pressure and carrying out fitness tests to see if they would qualify to fly!



Should you wish to visit to see us in action, please do contact the school office: [adminoffice@kingsclere.hants.sch.uk](mailto:adminoffice@kingsclere.hants.sch.uk) We look forward to welcoming you!

**Mrs Hannah Melrose**  
Headteacher



## Kingsclere Rainbows and Brownies

have continued to meet during lockdown via zoom meetings. We returned to face-to-face meetings in June last year and have been adapting to our new routines.

Last term the Rainbows got stuck into some badge work. We had a pizza party and learnt about different tools. We had a driver-less Derby and learnt how to cross a road safely. We also had a promises teddy bears picnic in our pyjamas. We finished the term with some Christmas crafts.

The Brownies spent the term being innovators, building towers and looking at support beams to improve stability. The girls "had a go" at being inventors and designed gadgets that would improve daily life, our favourite being the robo-butler that brings you ice cream!

We also spent a couple of meetings looking at different art mediums and getting creative from clay pots and sculptures to marble printing and foam painting with shaving foam.

Girls enjoyed a bonfire night with sparklers and toasted marshmallows around the campfire. We finished the term making Christmas gifts. We currently have spaces at Brownies for girls aged 7-10. For more information, please email [kingscleregirguiding@gmail.com](mailto:kingscleregirguiding@gmail.com)

Come shop for everyday and special items which will help keep your household 'greener' and prevent packaging waste too.



Our next market is **Sunday 13th February**

**\*\*new time\*\* 10.00am – 12.30pm at The Fieldgate Centre**

We will also be accepting for **recycling** at this market:

**BRAS EYEGLASSES INKJET CARTRIDGES \*\***

**\*\* We can only recycle original inkjet, not compatible, or laser.**

**Entry is FREE!** Meet up with friends to enjoy a coffee and refreshments, too.

In partnership with the Kingsclere Community Centre.

**Nicki, Sarah & Lucinda** [greenerkingsclere@gmail.com](mailto:greenerkingsclere@gmail.com)  
[www.Greener-kingsclere.co.uk](http://www.Greener-kingsclere.co.uk)

## Kingsclere Gardening Association

Happy New Year to all the gardeners of Kingsclere. I am the Secretary for the Kingsclere Gardening Association (KGA) and have taken over the role of providing an article for the Tower from John Eckton. We would like to raise the profile of the KGA using the power of social media. We have a Facebook page called Kingsclere Gardening Association. Please visit the page, join and share with gardening friends. We will use the page to advertise upcoming events in 2022 as well as continuing with these monthly bulletins.



Membership renewal is due in February and remains at £8 and £6 for seniors. This gives you free entry to evening talks during the winter months. These are held in February, March, September, October and November, so each talk costs less than a cup of tea at Costa!! For those who are not members, you can pay £3 per talk on the door. Membership can be renewed or started at our February or March meetings or at our Spring Show in April. We can only accept cash at this time and you will be issued with a membership card.

**The first talk of 2022 will be held on  
10th February at The Village Club.**

**The doors open at 7pm and the talk will commence at 7.30pm.**

Refreshments are included and we hold a raffle, any donations for the raffle are always welcome. The talk will be presented by Charlotte Popescu titled **"Foraging for Wild Food"**. Charlotte lives near Newbury and has also published a book on this subject. Foraging has been made very popular by TV chefs and lifestyle programmes. It will be great to learn what is edible and local to us.

**Beth Theobald 07916 032250**

### **VOLUNTEERING OPPORTUNITY!**

**Home-Start** believes that children need a happy and secure childhood and that parents play the key role in giving their children a good start in life to help them achieve their full potential. Our 1:1 volunteers and groups help to support the parent/child relationships by offering non-judgemental support and friendship.

We need volunteers to support families in the Community - YOU can make a difference to someone's life. This voluntary work is unpaid but is highly rewarding and out of pocket expenses will be reimbursed. Volunteers are required to attend a 25 hour preparation course spread over 5 weeks starting:

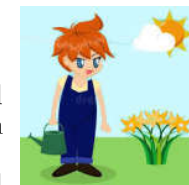
**3rd March 2022 from 9:30am-2:30pm. Dates TBC. INTERESTED?**

**Contact us: Rucstall Community Centre, Holbein Close. RG21 3EX**

**Tel: 01256 325793 Email: [info@homestart-nwhampshire.org.uk](mailto:info@homestart-nwhampshire.org.uk)**

**Website: [www.homestart-nwhampshire.org.uk](http://www.homestart-nwhampshire.org.uk)**

## February in the Garden



Now the days are getting longer and, hopefully, there will be a few days that the weather permits for some jobs in the garden to be done.

Turning the compost heap over with a fork to aerate and help the rotting process is a good job to do now. The centre of the heap will be rotted the most so the outer layer needs to be mixed into the centre. A good job to be done on a cold day as this uses up a fair amount of energy. This is the last chance to plant bare-rooted plants, such as roses, deciduous trees and hedges digging a hole large enough for the roots to have space to grow.

If the weather permits, cut the lawn with the mower blades set at high, and if possible, spike to aerate compacted areas, using a fork if an aerator is not an option. Avoid stepping on the grass while frosted as a brown foot mark will be left in the grass when the frost thaws and will remain until it grows out.

The snowdrops will have been flowering which is such a joy after the winter months. As soon as they have finished flowering, dig up and divide if you wish to grow them in another part of the garden.

The hellebores flowers have emerged and now is a good time to cut back the old foliage so that the flowers can be seen better and enjoyed.

Perennials that have not been cut back in the autumn need to be done now making way for the new growth. Take care while working in the borders as the spring bulbs will be growing through now and are easily damaged. Hopefully, the birds will find any bugs that have overwintered and survived in the base of the perennials which will be much appreciated by us gardeners.

Apple and pear trees can be pruned now. Sometimes, branches need to be removed to keep the canopy open. Also pruning now will give way to some vigorous regrowth.

Bare rooted raspberries that fruit mid-season may be planted now.

If space is limited, potatoes can be grown in containers. They do taste so much better when grown at home so I have a go. They can be started now indoors by chitting. Place in an egg box and leave to grow shoots. Rub off all but three or four shoots and then plant out. Tomato and pepper seeds can be sown now, if you can give them some warmth to grow.

Presently, we should be enjoying early crocus, camellias, viburnum tinus, heathers and early daffodils, with the promise of more to come in the garden.

**Denise Allen**



## Nature Notes

Why are some deciduous trees still looking green in this the unleafiest time of the year? A likely reason is the mistletoe growing there. If it is well established, it can hang in great clouds of yellowish green which is in marked contrast to the skeletal tree. Most folk know it to be a parasite taking most of its nutrient directly from its host and is spread by birds which feed on the berries. In an attempt to clean their beaks of sticky juice and seed, they scrape them against the tree's bark. The principal actor is the aptly-named mistle thrush but there is an article in an RHS magazine which states that the blackcap, which is increasingly an all-year-round resident here, is contributing. Mistletoe grows widely in England and is often associated with old parkland.

## JOTTINGS.

Rooks are known to be early nesters and on 4th December we watched a trio of rooks at a nest site. A pair were apparently picking over existing nest material whilst the single bird just perched on a neighbouring nest.

Such a winter of generally mild temperatures has seen dandelions in full flower on a sunny bank and yellow Welsh poppies just about to flower in a sheltered site locally.

On a winter's walk along the Kennet we noticed a low willow bough trailing in the water, the submerged tip had sprouted a tuft of flexible roots. Further visits may possibly show if the roots have survived the buffeting of the current and embedded themselves in the riverbed, then what next?

In November we mentioned finding a copy of our predecessor's Nature Notes. Happily, we were contacted by a family member, and we gladly donated them to where they belong.

**Diana Tait and Rod Eldred**



**DO come to our February meeting:**

**Speaker: Andrew Negus**

**Southampton – Part 2**

In June 2019 Andrew gave the first part of this talk which was so informative and entertaining that we invited him back for Part 2. From its beginnings as a Saxon settlement. Andrew will now take us from mid-18th century to the present day following Southampton's development from a spa town, its part in the World Wars, to today's busy port.



**Wednesday 16th February - 10.00am**  
**St Mary's Hall, Overton**  
*Free to members – non-members £3 on the door*



## KINGSCLERE MINIS RUGBY CLUB

Great news! KRFC Minis is on at 10.30am on Sundays at the new, temporary location of the Holding Field, Kingsclere RG20 5NT while the Fieldgate Centre pitches drainage project is carried out this season.

Minis Rugby is currently for ages 4 to 11 years (but please feel free to contact us regarding any other age groups).

We are running sessions based on the latest approved RFU Covid-19 guidelines and following all relevant risk assessments. All activity is outside, all training equipment is cleaned before and after each session and we have hand sanitizer stations available.

We look forward to seeing as many of you as possible at the sessions over the coming weeks.

For further information regarding the Kingsclere Minis please contact

**Nikki Shouesmith on 07958 568620**

or email [secretary@kingsclererc.co.uk](mailto:secretary@kingsclererc.co.uk)

Please follow us on Kingsclere RFC Minis

[facebook](#)



## KINGSCLERE RUGBY CLUB

*Teamwork, Respect, Enjoyment, Discipline, Sportsmanship*

Kingsclere Rugby Club would like to invite you to come along and join us. Inclusive of all ages 18+ and no matter what level of experience you have, you will get a great welcome.

We train from 7.30pm on Wednesdays at the new, temporary location of the Recreational Society, AWE Aldermaston, Reading RG7 4PR while the Fieldgate Centre pitches drainage project is carried out this season.

For further information please contact **Aurie Woodley on 07733 367900**

or email [info@kingsclererc.co.uk](mailto:info@kingsclererc.co.uk) or find further details at

[www.kingsclererc.co.uk](http://www.kingsclererc.co.uk)

[facebook](#)

Please follow us on Kingsclere RFC



[kingsclere\\_rfc](#)

## LOCAL LEGEND – JOHN PORTER 1838 – 1922

Outside the west door of St Mary's church is a magnificent pink marble tomb for John Porter who died 100 years ago in February 1922 and both of his wives. But who was he?

Well, he was only the most successful racehorse trainer of Victorian times and founder of Newbury Racecourse!



John Porter.



Porter tomb outside west door.



Stained glass window with 'Ormonde'.

Born 1838 in Rugeley, Staffordshire, after leaving school at 14, his father wanted him to study Law. John had other ideas and filled his summer holiday assisting a local trainer, later being employed as a lightweight jockey for Michel Grove at Findon, West Sussex, only weighing 4st 10lbs at the time.

He lodged at the Gun Inn in Findon, run by a widow and her daughter Emily aged 16. Fast forward 10 years and he was taken on by Sir Joseph Hawley as trainer for his 12 horses at Cannon Heath, just south of Kingsclere. But first, he married Emily Moodie, the innkeeper's daughter, before they came to Cannon Heath in 1863. It was Sir Joseph Hawley that had Park House Stables built some four years later, however, John was able to incorporate some of his ideas.

Soon the winners came. 'Blue Gown' won the Derby in 1868 and many more followed. Fast forward 8 years and Sir Joseph Hawley died, however in his will he had allowed John Porter to purchase the estate for £4,000, half of what it originally cost to build.

After a few lean years this investment started to pay off and the stables attracted many well-to-do owners entrusting their horses to John to train. The 1880's were particularly successful with the 1<sup>st</sup> Duke of Westminster and the Prince of Wales as clients and visiting many times.

Ormonde was the most successful horse he trained, winning the three great races (2,000 Guineas, the Derby and the St Leger) in 1886.

Ormonde's grandson Flying Fox repeated this achievement in 1899.

In all John trained seven Derby winners. Each time there were grand celebrations in the village, and even the inmates of the workhouse were treated to a feast.

Tragically his wife Emily died 1902 after a long illness. A year later he was remarried to Isabel Pilsbury in London.

John Porter retired from training in 1905 having set up Kingsclere Racing Stables Ltd with two of his patrons who employed William Waugh to continue training.

John initially moved to Stratton's Farm, just west of Kingsclere, to set up a stud. However, he was also immersed in a much grander project which he had been thinking of for some time – to build a racecourse at Newbury. He moved to a house in Donnington which he renamed Ormonde House which after his death and subsequent sale became a school and later the administration building for the original Newbury College.

Newbury Racecourse was managed by John Porter right up until his sudden death on 21st February 1922, having become unwell whilst supervising the preparation for a steeplechase meeting.

His passing was widely reported in newspapers around the world such as his legendary status. He was brought back to Kingsclere to be buried with his first wife Emily, the Yorkshire Post for example reporting that *'Almost the whole population of Newbury turned out to pay its last respects, and both sides of the road from Newbury to Kingsclere were lined with people'*.

So next time you pass the pink marble tomb outside the west door, spare a thought for John Porter, our local legend, who contributed so much to horseracing and late Victorian Kingsclere.

**Gareth Martin, Kingsclere Local History Association**

**Kingsclere Local History Association**  
(Formerly Kingsclere Heritage Association)



Our next meeting will be on  
**THURSDAY 17th FEBRUARY**  
**ROB DEAN**

Honorary President of the Kennet and Avon Canal Trust will present

**" THE KENNET AND AVON CANAL:  
IT'S RISE, DECLINE AND TRIUMPHANT RISE AGAIN "**

Rob will give us an illustrated account of why the canal was built and its years of success before a long slow decline led to its loss. The story of the heroes who rescued it and brought it back to life for generations to come.

We meet at 7.30pm in the main hall at Kingsclere Village Club.  
Visitors are always very welcome at £3 p.p.

**Michael Leah Secretary tel 297403**

## **THE KINGSCLERE TOWER DIRECTORY**

### **POLICE, FIRE or AMBULANCE**

Police Enquiries/Information

**Emergency 999**

**non Emergency 101**

**Kingsclere Health Centre:** 01635 296000  
**North Hampshire Hospital, Basingstoke** 01256 473202

**Parish Council:** 37 George Street (see page 2) 01635 298634  
**Dial-a-Ride** 01256 462101

### **CHURCH CONTACTS**

#### **St. MARY'S CHURCH:**

**Vicar** Rev Ben Read, The Vicarage, Foxs Lane 01635 298471

**Church Wardens:**  
 Robert Shotliff rjshotliff@gmail.com 07918 076630  
 Sarah Mussett sarah.mussett@hotmail.co.uk 01635 291900

**Administrator:**  
 Emma Rivers  
 administrator@stmaryskingsclere.co.uk 07790 934972

#### **METHODIST CHURCH:**

**Minister:** Rev Rachel Borgars 07889 905753  
 Rachel.Borgars@methodist.org.uk 01256 895878

**Secretary & Hire of Hall** Jeanette Billington 01635 297585

**ROMAN CATHOLIC:** Rev Patrick Tansey 0118 9814572  
 tadley@portsmouthdiocese.org.uk

Bas & Deane	01256 844844	Kingsclere Library	07899623872
Buses	0345 8101000	Swan Street P O	01635 297035
Trains	0845 748 4950	Vet	01635 297557 or 40565
Gas Emerg.	0800 111999	Dentist	01635 299981
Chemist	01635 298419	Age Concern Local Agent	07813 368259

### **BOROUGH COUNCILLORS**

**Ken Rhatigan** 07850 530319 cllr.ken.rhatigan@basingstoke.gov.uk  
**Stuart Frost** 07961 265719 cllr.Stuart.Frost@basingstoke.gov.uk  
**Geoff Poland** 07967 444137 cllr.geoff.poland@basingstoke@gov.uk

### **COUNTY COUNCILLOR**

**Tom Thacker** 01264 738464 tom.thacker@hants.gov.uk

### **MP for N.W. Hampshire:**

**Kit Malthouse** 01264 401401 kit.malthouse.mp@parliament.uk  
 2, Church Close, Andover, SP10 1DP

**There is a more comprehensive list of local contact numbers on the  
 Parish Council website. Go to [www.kingsclere-pc.org.uk/directory](http://www.kingsclere-pc.org.uk/directory)**