

# The Kingsclere Tower

A photograph of a street in Kingsclere, Hampshire. The street is lined with traditional English houses, some made of red brick and others of stone. The houses have multiple windows, some with white frames. The street curves to the right in the distance. There are several cars parked along the side of the road, including a red car. A few people are walking on the sidewalk. The sky is blue with white clouds.

What's On & Local News  
AUGUST 2023

# The Kingsclere Tower

EDITORIAL TEAM: Mike Stokoe, Stephen Steare, Steven Gaines, Cathy Williams  
 ADVERTISING: Brian Elborn b.elborn345@btinternet.com tel 298704  
 DISTRIBUTION: Brian Elborn tel 298704  
 ASSEMBLY: Andrew Kitch tel 299743  
 PRINTERS: Kingsclere Design and Print  
 COVER PHOTO: Swan Street (Gareth Martin)

What can we look forward to in August? More unsettled weather if early July is anything to go by! However, as you will find within this edition, there are lots of events and activities to keep you busy and entertained this month.

The Fieldgate Centre is again hosting a Summer of Fun every Wednesday for children aged 2 – 10 years, while the Village Club is hosting a Family Creativity Day on 12<sup>th</sup>. The Gardening Association Annual Show is on 20<sup>th</sup> at the Fieldgate Centre. Further afield a Bee Fayre is being held in Wootton St Lawrence, and Overton Art Group is holding an exhibition and sale, both are on 19<sup>th</sup> and 20<sup>th</sup>. St Mary's Village Fete ends the month in style on the 28<sup>th</sup>. The Dog Show is particularly popular, so get to the registration in good time to secure your pooch's entry, and don't forget the Duck Race afterwards! Finally, make the most of the beautiful surrounding countryside if you can, there are many local walks to enjoy.

Enjoy the summertime.

**The Editor**

Neither the Editors nor the Management Committee accept responsibility for the opinions expressed or the goods and services advertised in the Kingsclere Tower magazine. The Editors reserve the right to omit, amend, or condense any item submitted for publication.

## **To all "Tower" Contributors**

**Copy for September 2023 to the Editor at: [kingscleretower@gmail.com](mailto:kingscleretower@gmail.com)  
 NOT LATER THAN 12<sup>th</sup> August 2023.**

If possible please submit articles as a MS Word document, A5 page size, font Times New Roman 11, single spacing. *If email not possible, post to:*  
 23 Swan Street, Kingsclere, Newbury RG20 5PP.

**Will ALL contributors please include full name  
 and contact phone number/email address.**

# Kingsclere Parish Council

Chairman: Cllr Clive Mussett (07800 022432)

Email: [clerk@kingsclere-pc.org.uk](mailto:clerk@kingsclere-pc.org.uk)

Telephone: 01635 298634

Office: 37 George St, Kingsclere RG20 5NH

Please call to make an appointment to visit the office



**HEDGES** – Polite reminder to keep your boundary hedges trimmed back where they border a pavement.

**DOG MESS** – Please do remember to pick up after your pets. We are receiving numerous complaints particularly regarding the footpath leading up from the Dell.

**LITTER BINS** – Please do remember the village bins are for general waste – picnic items, snack wrappers and bagged dog mess etc, not for household items such as shoes, rubble, and cardboard. Our litter warden cannot collect and move around heavy items on his rounds.

**VILLAGE TOILET BLOCK** - Thanks to BCllr Rhatigan for cleaning and unlocking the toilets during the Coronation and for the recent wedding. Currently the block is maintained by B&DBC so the parish is grateful to Cllr Rhatigan for helping make this facility available over those weekends.

**TREES ON A339** – The trees by the roundabout on the entrance to the village were cut down without prior notice to us; although B&DBC do not have to make us aware they normally do out of courtesy. Both KPC and BCllrs are unhappy with the finished job and our BCllrs are working with Basingstoke Council staff on a resolution to make the site more aesthetically pleasing.

**CEMETERY** - Theft of Bouquet – KPC understands that sadly a bouquet of flowers placed on a grave a year to the day of the loved ones passing by her sibling was stolen from the cemetery before the deceased's mother made the journey to visit the next day. This caused extreme upset to the family.

**GREEN WHEELY BINS & GLASS RECYCLING** – The collections dates are 9<sup>th</sup> and 23<sup>rd</sup> August and 6<sup>th</sup> September.

**NEXT PARISH COUNCIL MEETING** – The parish council do not meet in August therefore the next full Council Meeting is scheduled for 25<sup>th</sup> September 2023. We welcome the attendance of all parishioners at our meetings and anyone who wishes to raise any matters of concern will be given the opportunity to do so during Public Questions.



@kingsclerepc



facebook.com/KingsclereParishCouncil

The Parish website: [www.kingsclere-pc.org.uk](http://www.kingsclere-pc.org.uk)



## St. Mary's Village Fete



### Bank Holiday Monday 28<sup>th</sup> August

We are really excited that St. Mary's, Kingsclere Village Fete is happening this year. It is going to be such a fun day with a Dog Show, Rock Choir and Violin Duo inside the church, and a band in the Churchyard. All the usual favourite stalls will be there, plus great food and drink too. It will be a fun-packed family day for all ages; you won't want to miss it. Bring your friends and family to join in the fun!

We have some amazing prizes for the raffle and tickets will be available to purchase on Saturday mornings in August in the Churchyard and at other venues across the village.

We would like to say a huge thank you to all of those who have already volunteered or donated. We would appreciate more help though, particularly with donations of bric-a-brac, books, toys, tombola prizes and cakes. Cakes can be brought along on the day, bric-a-brac, toys, books, accessories etc can be left in Church in the week commencing Monday 21<sup>st</sup> August from 10 am to 4 pm. We also need more volunteers to set up and clear away on the day and would welcome the loan of gazebos. If you can help please contact Pam or Sara.

Tel: Sara Hannan – 299550, Pam Kitch - 299743 or Email: [pamkitch16@gmail.com](mailto:pamkitch16@gmail.com)



## Can Kingsclere Community Larder help you?

2.30pm to 4.30pm every Thursday in the Kingsmill Room, St Mary's Church

For £3 you can choose one bag of tinned or packaged food and household goods and one bag of fresh and frozen food donated by the local supermarkets.

**Why are we here?** For anyone in need of food and essential household items in these challenging times.

**Where do the groceries come from?** Tinned and packaged groceries are given by people in the village to help others. Fresh food is surplus stock from supermarkets. Delivered by a charity in Basingstoke.

**Why do we charge £3?** To help top up the stock and cover other costs. Come and have a cuppa and a chat too!



## Watership Down Health



### Travel and travel vaccinations

Please organise your travel vaccinations in plenty of time before your holiday (at least six weeks before you travel). When you call the practice for a travel appointment, a pre-travel risk assessment form will be sent to you to complete (for each member of your family who are travelling) before your appointment. At the appointment the nurse will advise you of your travel requirements and what vaccinations may be necessary eg precautions to avoid malaria etc. Please be aware that some travel vaccinations are free of charge, others are chargeable. Watership Down Health is not a yellow fever accredited centre. We also recommend that patients make sure that they always have appropriate travel insurance and a GHIC (Global Health Insurance Card) card. We cannot consult or prescribe medications to patients overseas. Please take enough prescription medications for the whole duration of your holiday.

### Patient Participation Group

The Patient Participation Group (PPG) supports the practice staff in delivering health and wellbeing improvements for our community. We welcome all patients aged 16 and over who live within the practice boundary to share their ideas, skills and enthusiasm. For more information, go to the PPG area of the practice website; <https://www.watershipdownhealth.com/practice-information/patient-participation-group/> or contact Abigail (PPG Chair) at [abigail@comptonburnett.com](mailto:abigail@comptonburnett.com) or ask at the surgery reception desk.

### Shared decision-making

Shared decision-making is a collaborative process through which a clinician supports a patient to reach a decision about their treatment. The conversation brings together (i) the clinician's expertise, such as treatment options, evidence, risks and benefits, and (ii) what the patient knows best: their preferences, personal circumstances, goals, values and beliefs. We will be working to enhance this approach at Watership Down Health.

### Carer's Tea Party

With Covid, we have not been able to hold a Carer's Tea party for a few years, however we are looking to hold one on Tuesday 12<sup>th</sup> September 2023 in the afternoon at Overton Surgery. Further details will go out in due course.

### Late Appointments

We have seen an increase in patients being late for their appointments. Our Team is not always able to accommodate if a patient is late, and patients may be asked to rebook or wait until all other patients have been seen. Please be considerate towards our staff if this happens.



## Summer of Fun 2023 at The Fieldgate Centre

10am-2pm on Wednesdays  
27<sup>th</sup> July - 30<sup>th</sup> August

FREE play activities for children age 2-10yrs\*.

\*Children must be accompanied by a responsible adult at all times.

**Inflatables | Crazy Golf | Role Play**

**Bubble Fun | Shed of Stories**

**Songtree Music | Outdoor Games | Crafts...and more!**

If you would like to contribute towards the running costs, please use the QR code, or go to : <https://rb.gy/gddkb>



Offers of help with setting up and clearing away each week would also be welcomed

Tel: 01635 298497 Email: [fieldgatecentre@outlook.com](mailto:fieldgatecentre@outlook.com)

Website: [www.thefieldgatecentre.co.uk](http://www.thefieldgatecentre.co.uk)

## Kingsclere Players



### Panto Update

There was a fantastic turnout for the Panto promo days held at The Crown Pub and Fieldgate in Kingsclere in June and July.



Jo Batson of Kingsclere and the Kingsclere Players led a series of fun ice breaker games with kids aged 8 to 17 to unlock the up and coming talent for this year's panto, **Peter Pan**, which will be performed at the Fieldgate on the last weekend of November and the first weekend of December.

A big thank you to all those that are looking to get involved and thank you to The Crown and Fieldgate for hosting our events. The cast has been selected and rehearsals will start in September. Anyone looking to get involved backstage with costumes, props, sound/lighting, set etc can reach out to **Jessica Craker** on **07500 600255**.



## The Fieldgate Centre

Kingsclere Community Association  
Your community, your place

The centre continues to be busy and bustling with a host of community activities and private functions.

**Summer of Fun** started on 26<sup>th</sup> July and takes place weekly on **Wednesdays from 10am-2pm**. There are loads of activities for the kids to enjoy. Pop along and join in the fun which includes inflatables, crazy golf, role play and crafts. Aimed at ages 4 - 10 but younger siblings are welcome! (*see page 5*).

Although some of our regular classes take a break over the summer, you can still join in with Slimming World, Ceroc, Badminton and Racing Welfare Coffee Mornings at the Centre.

The **Kingsclere Gardening Association** will be here on **Sunday 20<sup>th</sup> August** with their **Summer Show**. Do come and see their displays and get inspiration for your garden. Look out for further details and how you can enter your prize blooms. (*see page 22*)

We have numerous private functions taking place over the summer holidays as usual. Monthly Meet Up does not take place in August but will be back on 19<sup>th</sup> September. Pop along for a short time or the whole afternoon.

Unfortunately a sky light which has been completely shattered, most likely by a golf ball. May we remind members of the public that golf is prohibited on the playing fields; only sports authorised by Basingstoke & Deane Borough Council are permitted.

**email:** fieldgatecentre@outlook.com

**telephone** 01635 298497

**www.thefieldgatecentre.co.uk**

## Wolverton Market

The next Market will be held on **Saturday 5<sup>th</sup> August** in the **Village Hall** from **9.30am until 11am**.

Various stalls to include bric-a-brac, handmade garden ornaments and boxes, books, jigsaws, cards and candles, locally produced honey, household products, locally grown plants and vegetables, and antiques and collectables.

Tea and coffee are also available. There is free parking outside the hall. For further information or if you might be interested in having a Stall, please **contact Wendy Morgan 01635 297538**.

We look forward to seeing you.

The Fieldgate Centre is run by Kingsclere Community Association, as a charity (No 1168366). The association is made up of volunteers who rely on the support and participation of the community.



## Kingsclere Youth Football Club

The club has completed a very successful season cumulating in a highly enjoyable annual awards day at the Fieldgate Centre, where every child was recognised with the presentation of a club trophy. We are proud of all the children that have represented Kingsclere this past season, and we are especially delighted that our U12 Reds won the 22-23 PHYL U12 League. They received their league trophies on Sunday 9th July at the PHYL presentation.

Training continues through the summer while we look forward to the new season commencing in September. We are excited to introduce a new U12 girls-only team, as we continue to develop our other sides which range from grassroots training (children aged 6 and up) to our U16's.

The club would like to thank our sponsors without whom we would not be able to provide new kits. Our thanks go to:



For more information about our club and contacts please go to our website : **<https://www.pitchero.com/clubs/kingsclereyouthfootballclub>**

We are keen to recruit referees to the club and can offer help with training and qualifications, anyone willing to get involved, please contact club secretary Richard Hanney (**[Richard.hanney53@btinternet.com](mailto:Richard.hanney53@btinternet.com)**).

If you have a keen child that would like to get involved then please contact us - we would love to welcome them along to a training session.

**Jayne Verney, KYFC Events & Parent Liaison**  
**Email:** Kingclereyouthfc@gmail.com **Mobile:** 07833 430009

## Upcoming Blood Donation Sessions at The Fieldgate Centre

Tuesday 1<sup>st</sup> August

Tuesday 22<sup>nd</sup> August

Thursday 14<sup>th</sup> September

Thursday 21<sup>st</sup> September

Thursday 5<sup>th</sup> October

Tuesday 10<sup>th</sup> October

Tuesday 31<sup>st</sup> October

Register, check availability of appointments, and book at **blood.co.uk**

## Kingsclere Rugby Football Club

**Feel Like Getting Fitter and Having Fun?  
Why not come and join us over the summer  
months at the Fieldgate Centre.**



The Summer Touch Tournament was a great success which finished on Wednesday 5<sup>th</sup> July with a BBQ at the Fieldgate Centre for all the participants after the session. The draw for the prize for those with the most attendances – 2 tickets to the England vs Wales World Cup warm up game at Twickenham on Saturday 12<sup>th</sup> August was made and the lucky winner was Dan O'Sullivan. Due to the popularity of the event the club is looking at the possibility to continue running the summer touch on an alternative evening. As soon as we know, the day will be posted on the club social media pages.

On Saturday 8<sup>th</sup> July the club ran a demonstration of minis rugby at Kingsclere Primary School Summer Fair, which was enjoyed by all with nearly 30 children taking part. Thank you to the school and organisers for inviting the club to participate, it is very much appreciated.

**Fitness for Rugby** will start on 12<sup>th</sup> July and run every **Wednesday evening** between **7.00 - 8.00 pm** for the rest of the summer until the beginning of September. Please feel free to come and join us.

Or for those who are not so energetically inclined there is always **Walking Rugby** which can be played by both males and females of all ages. The club runs this every **Wednesday evening** between **7.00 - 8.00 pm**.

To find out more information contact either **Dilwyn Patterson** by email **Chairman-Kingsclererfc@outlook.com** or by mobile **07831 161163** or **Stefan Morsley** by email **coach-kingsclererfc@outlook.com** or mobile **07815 670782**, or alternatively via the club's Facebook and Instagram pages.



### FOSM 200 Club

The winner of the July Draw was Jon Tennant – No.77

**Congratulations, Jon**

Next month's Draw will take place at The Crown at approximately 7pm on **Tuesday 8<sup>th</sup> August**

**200clubkingsclere@gmail.com**

## Kingsclere Community Library

**HOURS** Tuesday & Thursday 1.00pm - 5.30pm  
Saturday 10.00am - 1.00pm



### Summer Reading FUN!

All children are welcome to join our Summer Reading FUN! Programme. We 'launched' on Saturday 15<sup>th</sup> July so come to sign up! Read 6 books over the summer and you win!

### Visiting Books Programme!

A new selection of 'visiting books' from HCC is now available, so come in and browse.

### Giant Book Sale and Picture Sale

Our Giant Book Sale and Picture Sale is taking place again this year at the Fieldgate Centre on **Saturday 16<sup>th</sup>** and **Sunday 17<sup>th</sup> September**. Book donations can be delivered to the Kingsclere Community Library any time during opening hours from **15<sup>th</sup> August**. **Please do not deliver any pictures to the library** – for information about how to put your pictures in the sale please see our website at **www.kingsclerelibrary.co.uk**.

We are always in need of volunteers to keep our doors open, so if you have 2 hours per month (or more!) to help us out, do please get in touch.

**Nicki Lee, Kingsclerelibrary@gmail.com www.kingsclerelibrary.co.uk**  
**Library phone number: 01635 297464**

## Kingsclere Twinning Association



### DUCK RACE

Our courageous swimmers will be on the water for their annual competition on **Monday 28<sup>th</sup> August** after the St Mary's Village Fete.

Come and see us at the **Village Fete from 2pm** to choose your lucky duck for **£1 each or £5 for six**, and join us at the starting gate at **Popes Hill** at approximately **5pm** to cheer your ducks on with us.

Cash Prizes available for the 1<sup>st</sup>, 2<sup>nd</sup> and 3<sup>rd</sup> ducks over the finishing line, and a prize for the valiant duck that comes last!





**Kingsclere  
Film Club**

**Saturday 12<sup>th</sup> August 2023 at 7.30pm**  
Kingsclere Village Club, George Street  
Doors open at 7.00pm

## **Belfast**

(2021 - 12A - 98 minutes - Oscar & BAFTA)

*Belfast, 15 August 1969. Surrounded by sporadic violence and growing danger, nine-year-old Buddy finds himself confronted with the ugly reality of sectarian conflict. Directed by Kenneth Branagh and based on his childhood in the troubled city.*

Kingsclere Film Club welcomes guests at £7.50.  
New members are welcome at any time.

### **\*\*\* Free Film Invitation \*\*\***

From September, we are changing to a matinee screening, following on from the Village Club's Community Cafe on the last Saturday of the month.

## ***The Full Monty***

**Saturday 30<sup>th</sup> September at 2.00pm**

**Refreshments from 1.30pm**

Come for a free trial to see a classic film. Open to all.  
Shown on the big screen at the Village Club - on the bus route!

For further information call: **John Sawyer** (Chairman) **297221** or  
**Diana Tait** (Membership Secretary) **298494**

## **Royal British Legion**



The Kingsclere Branch of the Royal British Legion has begun its preparations for this November's Remembrance Parade. Last year like all years saw a great turnout and we thank all those who attend for their support.

We will shortly be reaching out to local organizations; if you haven't participated in the parade previously but would like to join us or be involved in some way please contact:  
**kingsclere.chairman@rbl.community.**

# **The Church Pages**



Hello! I'm delighted to be writing my first lines for The Kingsclere Tower as the new Priest-in-charge of St. Mary's, along with St. Peter's & St. Paul's.

Beverley & I have moved from rural Cambridgeshire, and we're enjoying getting to know the beautiful countryside here. Our two dogs, Alfie & Bertie are also enjoying sniffing their way around every square inch we visit and got particularly excited by a Muntjac that bounded through the vicarage garden the other day. Talking of wildlife, I heard recently that... "if you're doing it properly, being a Church leader is a walk in the park. It's Jurassic Park, but it's still a nice walk, all the same!" Well, we have to say that the Kingsclere locals are as far from 'dinosaurs' as could be, and have been absolutely charming! We have been humbled by the welcome we've received from the St. Mary's family, and from people we've met as neighbours, in the school, at the shops and wandering around the recent open gardens' day. We are really looking forward to getting involved in village life and getting to know many of you more in the years ahead.

Jesus said that His followers are both salt & light to the world (*Matthew 5: 13-16*). Salt does two things. It preserves, so it stops things going rotten or turning sour, and keeps them good. And salt seasons, so it enhances the flavour of things it comes into contact with. Light prevents darkness, in fact, Einstein once said that darkness doesn't exist – it's just the absence of light. Our hope and prayer is that the presence of the churches here, and of Jesus Himself within us as believers, will be like salt & light to the village – that we will be instrumental in stopping things going sour, that we will enhance the flavour, and we will push back darkness in all its forms.

The church fete is happening on bank holiday Monday, the 28<sup>th</sup> of August. Beverley & I are really looking forward to what sounds like a great day, so if you see us there, or at any other time, please do say "Hi"; we love meeting new people. We can't promise to remember your names - please do forgive us if we ask you to remind us! We're having a picnic in the St. Mary's grounds after our morning service the following Sunday, September 3<sup>rd</sup>, beginning around 12:00 noon or so. Why don't you come and join us – or maybe come to the service itself at 10:30? We're a friendly bunch and won't bite!

Thanks for reading - may you hear God's Voice calling you and encounter Him for yourselves.

Grace & Peace,

**Rev. Pete Williams**

## St Mary's Church

### Worship in our Churches

#### August 2023



Services in our churches will be as follows:

Thu 3 <sup>rd</sup>	Holy Communion 9.30am St Peter's, Headley	Morning Worship 10.30am St Mary's, Kingsclere
Sun 6 <sup>th</sup>		Holy Communion 10.30am St Mary's, Kingsclere
Thu 10 <sup>th</sup>	Morning Worship 9.30am St Peter's, Headley	Morning Worship 10.30am St Mary's, Kingsclere
Sun 13 <sup>th</sup>		Morning Worship 10.30am St Mary's, Kingsclere
Thu 17 <sup>th</sup>	Morning Worship 9.30am St Paul's, Ashford Hill	Morning Worship 10.30am <b>Kingsclere Methodist Church</b> (note venue for this week only)
Sun 20 <sup>th</sup>		Morning Worship 10.30am St Mary's, Kingsclere
Thu 24 <sup>th</sup>	Holy Communion 9.30am St Paul's, Ashford Hill	Morning Worship 10.30am St Mary's, Kingsclere
Sun 27 <sup>th</sup>		Morning Worship 10.30am St Mary's, Kingsclere
Thu 31 <sup>st</sup>		Morning Worship 10.30am St Mary's, Kingsclere

[www.stmaryskingsclere.co.uk](http://www.stmaryskingsclere.co.uk)

## Kingsclere Methodist Church

### Services for August

Sun 6 <sup>th</sup>	Rev Andy Fitchett
Sun 13 <sup>th</sup>	Mrs Maggie Wallace
Sun 20 <sup>th</sup>	Rev Andy Fitchett
Sun 27 <sup>th</sup>	Rev Canon Jill Bentall

All services begin at 10am and all are welcome

Coffee Morning every Thursday 10.30 - 12am

Hall available for hire (see details at the back of this magazine)

Christine Westcombe email [c\\_westcombe@hotmail.com](mailto:c_westcombe@hotmail.com)

## Lighting up St Mary's

The sight of St Mary's Church when it is floodlit is truly beautiful. Many people sponsor these lights (£12 per evening) to celebrate an occasion, such as a birthday, wedding, anniversary, christening, or some other special day in their lives.

To book, contact Emma, our Church Administrator on **07422 687125** or email: [administrator@stmaryskingsclere.co.uk](mailto:administrator@stmaryskingsclere.co.uk)



### August

5<sup>th</sup> For Mark and Rocket. I love and miss you. Amanda

31<sup>st</sup> In memory of Janet Lavina Cox on your birthday. Always in our hearts and minds. Love from all the family.

## St Mary's Church - Saturday Coffee

Freshly brewed coffee, tea and delicious homemade cakes.  
All welcome – please do pop in!

**10.00-12.00am August 5<sup>th</sup>, 12<sup>th</sup> and 26<sup>th</sup>** in the Kingsmill Room  
Volunteers welcome – if you're able to pour coffee, welcome people or make cakes occasionally please do contact the church office on **01635 299528**.

## KINGSCLERE CHARITIES

### Incorporating:

**Kingsclere Welfare Charity and Kingsclere Apprenticing Charity**

### 2023 Meeting Dates:

Thursday 21<sup>st</sup> September

Thursday 16<sup>th</sup> November

The Trustees will meet on the above dates. Applications must be received by the clerk two weeks before each meeting. Apply in the first instance to [www.kingsclerecharities.org](http://www.kingsclerecharities.org) where information and application forms can be found by selecting the appropriate charity for your needs, and submitting to the clerk. Alternatively please email [kingsclerecharities@iname.com](mailto:kingsclerecharities@iname.com)



## Friends of St Mary's Kingsclere Ltd

Our June event, with nine village gardens open on two weekend afternoons, proved a great success. We are most grateful both to the gardeners who had battled through difficult extremes of weather in the previous weeks, and to our appreciative visitors for their support. Blessed with seamless sunshine, and with al fresco refreshments in the Churchyard, it was a lovely weekend.

Arrangements for the **August Bank Holiday Fete** are well advanced, and FOSM will again have a gazebo to welcome new members and to explain how the funds we raise are spent on restoration and repair of the Church fabric. Do please come to visit us, and find out more about what we do, and how you could be actively involved. We shall be selling the Village Cookbook and various items with the FOSM Bedbug logo – all useful as gifts – and we will be serving celebratory champagne at £4 a glass, with the first glass free for anyone who signs up as a Friend!

**Peter Turner, Chairman**

Website: [friendsofstmaryskingsclere.org](http://friendsofstmaryskingsclere.org)

For membership and other enquiries contact: [fosmkingsclere@gmail.com](mailto:fosmkingsclere@gmail.com)

## Kingsclere & Headley Woodlands W.I.

Kingsclere Village Club, 35 George Street



Our speaker in July was all we would wish for; we last had Heather Wylde as our speaker in 2018 and she is just as good second time around with her World War II story.

August is the one month of the year when we don't have a monthly meeting (we must hold 11 meetings a year) so this month we are doing what all our ladies enjoy and that is going out for lunch. Some ladies might think that is all we do and why not, if it is an enjoyable occasion, as it always is! So, on the **9<sup>th</sup> August** we will be donning our glad rags and meeting up for lunch. The venue has yet to be decided.

September, when it comes, will be a chance to say what other activities members have done during the summer and once again, enjoy a speaker. Enjoy the sunshine, everyone.

**Margaret Geary, President tel 01635 297197**



**It is ALL happening!**

## Sustainable Market + Repair Cafe + Clothing 'Swap' + Café

**Sunday, 3<sup>rd</sup> September, 10am - 12:30pm at the Fieldgate Centre**

In partnership with KCA

- \* Our regular **Sustainable Market** with stalls including refillables.
- \* Our third **Repair Cafe** – Bring along almost any small repair. To get ahead of the queue and give us the best chance of fixing it, please register your repair on our website. Note, we do not compete with local businesses offering repairs.
- \* **Clothing 'Swap'** – Take anything you can use, and if you have can, leave any good quality, clean clothing for others. But you do not have to donate to take anything away.
- \* **Cafe** – Coffee, tea, cakes and other yummy items to enjoy while waiting for your repair or chatting with friends.

Can you help out at the market? Or can you mend or repair anything? Help us keep still useful items out of the bins! Please email us! We are grateful for the support from our partners at the Kingsclere Community Association.

**Nicki, Sarah, Lucinda & Sue** [greenerkingsclere@gmail.com](mailto:greenerkingsclere@gmail.com)  
[www.Greener-kingsclere.co.uk](http://www.Greener-kingsclere.co.uk)

## Shipinnarts



**Sat 19<sup>th</sup> August 3pm - 5pm**  
**A Musical Cream Tea!**

with Angela Moore (Harp) and Peter Jenkins (violin)

**Tickets £12 to include Tea. (Tickets on door on the day £15). Children free**

The Ship Inn Country Hotel, Ashford Hill, RG19 8BD  
 Tel: **01189 814504**

**See Events 2023** on our website for more details of each event:

<https://shipinnarts.org/> **Tickets on Eventbrite or direct from The Ship**



## KINGSCLERE VILLAGE CLUB

Est. 1921 CHARITY 1189234

<http://www.kingsclerevillageclub.co.uk>

<https://www.facebook.com/kingsclerevillageclub>

### Family Creativity Day

**Saturday 12<sup>th</sup> August, 10.30 am to 2 pm.**

A range of activities for 5 to 11 year-olds and 3 to 4 year-olds (with parental participation). Lead by Stage Coach, Newbury and inspired by characters from children's musical films.



This is a free event but please contact us to book a ticket as places are limited. Light refreshments available to purchase, bring a picnic lunch.



### Jane Austen: The Woman and the Writer

**Thursday September 7<sup>th</sup>, 7.30pm.** An illustrated talk by Maureen Stiller of the Jane Austen Society, looking at Jane's personal life alongside her development as a writer and her influence on the novel.

Tickets £8 from <https://www.wegottickets.com/event/587736> or Helen (see below).

### Harp Recital

**Sunday 6<sup>th</sup> August 3.30 pm.**

There may be some tickets left for the cream tea and harp recital.

Tickets £15 from <https://www.wegottickets.com/event/585234> or

Helen (see below).

### Exercise Classes

We have places in September for **Chair Pilates, Thursday afternoons at 1.30 - 2.30pm.** Excellent for those with limited mobility. Also, **Yoga on Tuesday evenings 7.30 - 9pm** and **Wednesday mornings 10 - 11am.** Please contact Emma on [bookings@kingsclerevillageclub.co.uk](mailto:bookings@kingsclerevillageclub.co.uk) for

### Community Café

No café this month – see you in September!

**Helen 297390 or [events@kingsclerevillageclub.co.uk](mailto:events@kingsclerevillageclub.co.uk)**

## Save 24 Swan Street The Pledge 500 Club



With only a short time to ensure we don't lose the community asset, that is 24 Swan Street, the time to act is NOW!

24 Swan Street is an important building in our community that is under threat from redevelopment. Not only is the building home to a dance studio and Performing Arts College, it also serves as the main parking facility for businesses, residents and visitors to Kingsclere. The redevelopment plans would not only make the dance school and college homeless, but have allocated just two spaces for community use.

Kingsclere Performing Arts & Youth Centre have now launched The Pledge 500 Club. If just 500 people pledge £500 then we will reach the purchase price set by Basingstoke and Deane. This will enable the Community Interest Company, through the Greenham Trust Match Funding Scheme, to put in a successful bid and bring 24 Swan Street into community ownership.

The Pledge 500 Club is open NOW, and will end with the grand finale **'Step Up for Swan Street Festival' on Saturday 2nd September.** The festival is to be held on the spectacular White Hill and promises to be a fabulous celebration of local music, dance, food, drink and fun for all the family.

If you are able to gift us something for our auction, we would be very grateful. As a thank you for playing a part in the future of performing arts in Kingsclere and ensuring that 24 Swan Street remains in community ownership, you will benefit from advertising for your business, as we will promote your generosity and contribution.

You can become a Swan Street Saviour, purchase Festival tickets and offer your help at [www.save24swanstreet.co.uk](http://www.save24swanstreet.co.uk)

# Kingsclere CE Primary School



This term we celebrated with St. Mary's Church two fantastic concerts for "i-sing Pop!" which were absolutely fabulous! Children sharing songs and dancing together brings joy to all, and it was a delight to see their beaming faces as they performed in such a spectacular space!



We are spending some time over summer holiday tidying up the school grounds and prepping the classrooms ahead of the children's return in September. We are excited to have Miss Bagshaw join our staff team who is supporting maternity leave cover and teaching in Year 3 & Year 4. We are also having lots of exciting FKS (school PTA) events being planned for the year to help raise vital funds for the school.



The summer holidays always provides an opportunity to reflect on the year that has past, what a busy one we have had! - multiple sporting events, musical events, residential trips, visiting people within the community, welcoming our therapy dog "Bobby", working with the Church team, as well as typical learning within school.

We recently received a telephone call from a member of the community who praised the school for all the sport the children have been experiencing. It was lovely to hear this feedback!

We are so proud of our school and all the things the children are able to experience! Thank you to everyone for their supporting in helping us to achieve this.

If you would like to support us in school as a volunteer, perhaps helping in our library or being an adult helper at a sporting event, please do contact the school. We look forward to welcoming you!

**Mrs Hannah Meltose, Headteacher**

## Busy Bees



It's been an eventful end of term for Busy Bees. In July we held a fun run, followed by a picnic, games, singing and dancing. Thank you to all who came and participated, and to the volunteers who helped on the day. You can see the amount raised, and our fundraising efforts here: [tinyurl.com/busy-bees](https://tinyurl.com/busy-bees)

Our Butterfly group also went on a leavers' trip to Bucklebury Farm Park. We are pleased to be able to do this again after missing out for a few years due to the pandemic. The staff and children had a lovely day and enjoyed the opportunity to say goodbye and celebrate the children's achievements over their time at preschool.

Special thanks to Little Lives Children's Charity, Robert Higham Educational Trust, Jollypop Entertainment and Moo Music for their help and contributions to these events.

We wish our Butterflies the best of luck as they move on to primary school, and look forward to welcoming our new starters and returning Caterpillars in September.

Our AGM will be taking place towards the start of term and we are looking for new committee members and volunteers. If anyone would like to join please contact [admin.busybees@btconnect.com](mailto:admin.busybees@btconnect.com)

Finally, thank you as always to our staff for all their hard work, and once again for the support of our community. Busy Bees will reopen on 5<sup>th</sup> September, and we wish you all a very enjoyable summer.

**The Busy Bees Committee**

## Kingsclere Village Bunnies Baby & Toddler Group

**Where:** The Village Club, George St

**When:** Tuesdays, 9:00am – 11:00am

**Cost:** £2.50 for 1<sup>st</sup> child (including snack for child and hot drink and biscuit for adult), 50p per extra child, £1 per extra adult



The Bunnies had an amazing time at our summer party last month! Thank you to everyone who came along and helped make it such a huge success.

We are open throughout the summer holidays, and older siblings are welcome to join us.

Thank you as always to Swan Street Stores for their continued support of a weekly donation of fresh fruit snacks for the bunnies.

For information visit our Facebook page, or regular visitors can join our WhatsApp group for weekly updates.

Bunnies will be closed on Tuesday, August 29<sup>th</sup> **Tess Watkins 07905 624679**



## August In The Garden

We should still have some warm days similar to July, fortunately the high temperatures did not last too long. Most plants, trees, and shrubs have grown very well this summer.

Shrubs and hedges will need another trim this month, as there has been so much growth. Roses that have flowered will need to be dead-headed; a small prune will encourage new growth. Rambling varieties will need some of the old wood cut down to the ground to encourage new shoots to develop from the base of the plant. Roses are very obliging however they are pruned, always producing new shoots. The only problem is that they may become a strange shape. Aim to keep the plants open, in a cup shape, taking out stems that cross.

Many of the vegetables will have been harvested this month. Onions will need to be dried off after lifting to enable them to be stored during the winter. Runner and French beans and courgettes will still be cropping. If there is an empty space in the vegetable garden after crops have been harvested, carrots, spring cabbage, and turnips can be sown. Herbs that grow quickly, e.g. flat leaf parsley and coriander will work well. Kohlrabi sown early August will be ready in a few weeks; I haven't grown it before so I might try it myself.

Harvest early apples and pears, these will need to be used quickly as they do not store well. It's time to remove old raspberry canes, taking out the canes that have fruited, leaving the thinner new ones to mature.



*blight on tomato plant*

Tomato and potato plants can suffer from late blight; brown patches appear on the stems and leaves. Remove affected plants quickly as this can spread rapidly.

Plants grown in pots will benefit from a liquid feed, as will the late flowering clematis. Clematis are hungry plants, they also like to be well watered. Lavender plants will need a small trim, cut back 2.5 cm below the flowering stem to keep them neat. Take semi ripe cuttings of shrubs and cuttings from flowering plants; not all will take but it will be rewarding to get even small result. Keep deadheading and weeding, feed the lawns with phosphate lawn feed, getting the grass stronger for the winter.

Flowers that will be performing well this month are clematis, fuchsias, penstemon, salvias, hydrangeas, sweetpeas, crocosmia, and pelargoniums.

*fuchsia*

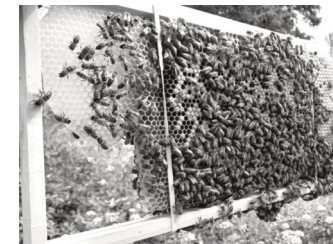


Denise Allen

## Nature Notes

We have decided to look after a hive full of honey bees. They arrived in April and at first, not much happened, but as the days have become warmer, there have been lots of them buzzing around the garden. My dad thinks there are about 5000 of them now!

Every couple of weeks my Dad opens them up and we get to see inside the hive. We started off with three frames of honeycomb but now they have nearly filled eight frames. Some of the combs are filled with larvae. They look like little, white caterpillars. Some are filled with different colours of pollen and some are filled with honey. I can't wait to try some.



We have been out for some early morning walks at the weekends. It's very quiet at that time of day. Sometimes while walking up the Recreational Grounds, we have seen Muntjac deer running in and out of the bushes. They are very small and very fast. My Mum wonders if they play in the park at night, while we are all sleeping? I told her not to be silly; a deer couldn't sit on a swing!

Lily K



## Volunteering Opportunity

Does your brain need a kickstart?  
Looking for a way back to work?  
Could you use your skills to help others?

We have many ways in which you can help – office administration, giving advice and helping with social media. We are actively looking for volunteers to give advice to help improve the lives of people in our community. We can support people with grants and benefit advice and help to address debt, housing and family issues.

Full training will be given and you will be recruited as part of a team so that you all learn together. Our next intake will be in September, once the summer holidays have finished. There will be an assessment morning on 6<sup>th</sup> September where you can meet the team and the training will start on 18<sup>th</sup> September.

If you would like to know more, or to come and experience what we do please contact us initially by email on [admin@catadley.org](mailto:admin@catadley.org)

## Kingsclere Gardening Association

Our next event is

**59<sup>th</sup> Annual Show, Sunday 20<sup>th</sup> August 2023** \*  
 at The Fieldgate Centre, Kingsclere  
 Doors Open to the Public 2 - 4.30pm



There was lots of information last month about the Show. It's very easy to enter. Take a look at the Show Schedule and Show Rules that are in the files area of the Facebook page called KGA Full Schedule 2023, scroll down and the information for the classes start on Page 5. If you are not sure, please contact Laura or Beth and we can help. We get amazing, high quality exhibits in all the categories and in particular the Domestic category. This encompasses the cookery, handicraft, floral art and photography sections. The last day for entries is **Thursday 17<sup>th</sup> August 23**, unless the class is an "Entry on the day".

If you would like to enter, please contact **Laura Butler on 07770 614971** or email [laura@ro-jen.co.uk](mailto:laura@ro-jen.co.uk). We look forward to seeing you there.

### Evening Talk, Thursday 14<sup>th</sup> September 2023 Roger Butler - Pelargoniums My Way

Roger is a long-standing member of the KGA and has been growing, judging and showing pelargoniums for many years. His talk will cover all aspects of cultivation and propagation. There will be a propagation demonstration with lots of tips to take away to create new plants this autumn ready for next year.

Our evening meetings take place in **The Village Club**, 35 George Street, Kingsclere RG20 5NH. Doors open at **7pm for a 7.30pm start** for approximately 1 hour. After the talk there will be a raffle and refreshments.

**Beth Theobald (Secretary) 07916 032250**

**Facebook: Kingsclere Gardening Association**



The next event we are all looking forward to is the **Summer Barn Dance**, which will be held on the **16<sup>th</sup> August at 6.30pm in St Mary's Hall**. We have managed to secure the highly praised Banter Band to perform, and round us up and point us in the right direction!

Non-members can join - tickets £18 (£15 for members)

More information on the Barn Dance and how to get involved with u3a is available on the Overton and District Website.

Scan the QR code or visit: <https://u3asites.org.uk/overton/home>



## Bee Fayre Celebrations



**Saturday 19<sup>th</sup> and Sunday 20<sup>th</sup> August 2023**

**Wootton St Lawrence Church and Meadows RG23 8PE**

**A wonderful day out with entertainment for the whole family!**

Join us for a very special weekend of Bee Fayre Celebrations. We combine telling the 'bee story' inside the Church with presentations and workshops, and outside in the Church Meadows with specialists, beekeepers, and stallholders to help everyone understand the need to create a sustainable environment for bees to thrive.

Enjoy the displays and demonstrations, buy honey from around the world, find lovely gift ideas for friends and family, and contribute to the success of our Fayre and The Charles Butler Foundation. Purchase your Charles Butler 400 Anniversary Commemorative Book and see the Charles Butler Stained Glass Window. Visit our website for more details and the weekend programme.

**[www.charles-butler400.co.uk](http://www.charles-butler400.co.uk)**

**Instagram: [beefayrecelebration](https://www.instagram.com/beefayrecelebration)**

## ART EXHIBITION & SALE

**Overton Art Group**



**19<sup>th</sup> and 20<sup>th</sup> August, 10 am – 5 pm**

**Recreation Centre, Bridge Street, Overton RG25 3HD**

## **THE KINGSCLERE TOWER DIRECTORY**

### **POLICE, FIRE or AMBULANCE**

Police Enquiries/Information

**Emergency 999**

**non Emergency 101**

**Kingsclere Health Centre:**

01635 296000

**North Hampshire Hospital, Basingstoke**

01256 473202

**Parish Council:** 37 George Street (see page 2)

01635 298634

**Kingsclere Charities Clerk:** Jan Pearce

01635 269184

kingsclerecharities@iname.com

**Dial-a-Ride**

01256 462101

### **CHURCH CONTACTS**

#### **St. MARY'S CHURCH:**

**Vicar** Peter Williams vicar@stmaryskingsclere.co.uk

**Church Warden:**

John Price johnsaprice@hotmail.com

01635 297780

**Administrator:**

Emma Rivers

01635 299528

administrator@stmaryskingsclere.co.uk

07422 687125

#### **METHODIST CHURCH:**

**Minister:** Rev Rachel Borgars

07889 905753

Rachel.Borgars@methodist.org.uk

01256 895878

**Secretary & Hire of Hall** Jeanette Billington

01635 297585

**ROMAN CATHOLIC:** Rev Patrick Tansey

0118 9814572

Bas & Deane 01256 844844

Swan Street P O 01635 297035

Buses 0345 8101000

Vet 01635 297557 or 40565

Trains 0845 748 4950

Dentist 01635 299981

Gas Emerg. 0800 111999

Age Concern Local Agent 0800 3287154

Chemist 01635 298419

Watership Down Health 01635 296000

Kingsclere Library 01635 297464

### **BOROUGH COUNCILLORS**

**Ken Rhatigan** 07850 530319

Cllr.Ken.Rhatigan@basingstoke.gov.uk

**Mike Bound** 07833612735

Cllr.Mike.Bound@basingstoke.gov.uk

**Kerry Morrow** 07422 651172

Cllr.Kerry.Morrow@basingstoke.gov.uk

### **COUNTY COUNCILLOR**

**Tom Thacker** 07712695468

tom.thacker@hants.gov.uk

### **MP for N.W. Hampshire:**

**Kit Malthouse** 01264 401401

kit.malthouse.mp@parliament.uk

2, Church Close, Andover, SP10 1DP

**There is a more comprehensive list of local contact numbers on the Parish Council website. Go to [www.kingsclere-pc.org.uk/directory](http://www.kingsclere-pc.org.uk/directory)**