

# The Kingsclere Tower



May 2020

Your Village Magazine

# The Kingsclere Tower

EDITORS: Sarah Hewitt, Nicki Lee and Mike Stokoe  
DISTRIBUTION: Brian Elborn ☎298704  
ADVERTISING: Les Wallace, Jada, Union Lane ☎298794  
ASSEMBLY: Andrew Kitch ☎299743  
PRINTERS: Kingsclere Design & Print Ltd  
LAYOUT/COVER: Mike Stokoe

Kingsclere, at least on the surface, appears to be coping well during the Covid-19 lockdown. Many people have come together to support those who are self-isolating or are lonely and may need help shopping. The shops that have been allowed to stay open have done so and have been tremendous in helping those who have difficulties getting to them.

Likewise those working for the NHS locally and who provide care for the sick, disabled and elderly have been quietly getting on with their jobs despite the worries they must have for their own health and that of their families.

We also recognise that this is a very difficult time for those who have lost jobs and income amongst whom we must include many who advertise in our magazine. Thank you to them for their continued support.

Not least amongst those that are experiencing difficulties are our local charities which are normally well supported in the village but have suffered due to lack of fund raising and ability to operate. Please don't forget them!

Sadly, the commemoration of the 75th anniversary of VE Day on the 8th May cannot go ahead as planned due to the cancellation of public events. Spare a thought on the 8th for our parents and grandparents who sacrificed so much for us.

**The Editor**

Neither the Editor, nor the Management Committee accept responsibility for the opinions expressed or the goods and services advertised in the Kingsclere Tower.

## **To all "Tower" Contributors**

Copy for **June** to the Editor at 3 Blue Meadow, Garrett Close.  
or [kingscleretower@gmail.com](mailto:kingscleretower@gmail.com)

**NOT LATER THAN 12th May.**

**Will ALL contributors please include full name  
& home phone number/e-mail address.**

## KINGSCLERE PARISH COUNCIL

**Chairman:** Cllr John Sawyer (297221)  
**Clerk:** Louise Porton (298634)  
**email:** [clerk@kingsclere-pc.org.uk](mailto:clerk@kingsclere-pc.org.uk)  
**Office:** 37 George Street, Kingsclere RG20 5NH



### FROM THE CHAIRMAN - KINGSCLERE PARISH COUNCIL

Together with the rest of the Council, I would like to thank residents for their incredible response to the COVID-19 crisis that is sweeping the nation; there is a real sense of a community coming together. Within hours, groups of volunteers had come forward to support those unable to leave their homes, to act as stewards at the village shop and collect together toiletries and other items for our dedicated NHS workers and carers.

Our loyal shopkeepers have stepped up to the emerging scenario and have worked tirelessly to keep us supplied with essential food and medication, and the kind and professional staff at our Health Centre have adapted procedures to ensure services can be maintained safely.

We are immensely grateful to you all and all who serve our community. Take Care. Stay safe.

Cllr. John Sawyer Chairman 2 April 2020

**OFFICE OPENING** - The Parish Office is now unmanned, but we can be contacted by phone (leave a message) and email and the Clerk is conducting routine business from home.

**MEETINGS** – New regulations came into force on 4<sup>th</sup> April 2020 allowing Parish Councils to hold “virtual meetings”. Therefore, whilst the Stay at Home restrictions are in place, all council meetings will be held remotely.

**CORONAVIRUS (COVID-19)** – The government is making regular announcements in response to the ongoing outbreak. We are updating information on our website and social media as soon as possible but anything we post should not be a substitute to latest updates from the government <https://www.gov.uk/coronavirus>.

Here is a quick summary of some important local news :-

#### **Support for people and businesses that are struggling financially**

Basingstoke and Deane Borough Council is offering a wide range of support to individuals and businesses struggling financially, including making changes to how council tax is paid and implementing the rates relief for eligible businesses across the borough.

For an overview of the support being offered for residents in paying their council tax see [www.basingstoke.gov.uk/covid-19-council-tax](http://www.basingstoke.gov.uk/covid-19-council-tax)  
 businesses see [www.basingstoke.gov.uk/covid-19-business-guidance](http://www.basingstoke.gov.uk/covid-19-business-guidance)

### The Coronavirus Hampshire Helpline

Hantshelp4vulnerable - can be contacted on 0333 370 4000. The helpline is available seven days a week, from 9am to 5pm.

### Local Help

If you live in Kingsclere or the surrounding area and need help due to illness or self-isolation with things such as picking up shopping/medication, posting mail, urgent supplies or just a friendly phone call, please contact the Clerk (contact details above) or through the website or see the details of local help available on the next page. You will then be matched with a friendly, local volunteer to help you with what you need.

Want to volunteer to help? Register as a volunteer at <https://www.bvaction.org.uk/coronavirus-volunteering/> or call 01256 423852

All volunteers are asked to adhere to the Government's guidance on how to volunteer safely <https://www.gov.uk/government/publications/coronavirus-how-to-help-safely--2/coronavirus-how-to-help-safely>.

### Waste collections temporarily reduced to protect service and bin crews

Bin collections are set to be reduced temporarily to ensure waste, recycling, glass and clinical waste collections can continue in the borough during the COVID-19 outbreak.

This means residents will be asked to only put out their green recycling bin and glass container on their normal recycling collection day and the other week put out their grey waste bin. The waste bin will be collected every fortnight instead of every week. The day of the week that bins are collected will not change.

**GREEN WHEELY BINS & GLASS RECYCLING** – the collections dates are 6<sup>th</sup> and 20<sup>th</sup> May 2020. See further details on page 5.


### Litter Bins


All litter bins across the parish are temporarily on a reduced emptying schedule. Where possible please take all litter and dog waste bags home for disposal.

**ANNUAL REPORT** – The Annual Report is in the process of being compiled. Please can organisations who wish to be included in the publication send a written report to the clerk asap but no later than 18<sup>th</sup> May 2020.

**NEXT PARISH COUNCIL MEETING** – will be at 7:30pm on Monday 18<sup>th</sup> May 2020, following the Annual Meeting of the Parish Council. The meeting will be held virtually and details of how parishioners can connect to watch the meeting will be available on the website [www.kingsclere-pc.org.uk](http://www.kingsclere-pc.org.uk).

The Parish website [www.kingsclere-pc.org.uk](http://www.kingsclere-pc.org.uk)

 @kingsclerepc

 facebook.com/KingsclereParishCouncil

## Local Help

**If you become unable to leave your home because you are ill and self-isolating or vulnerable and practicing social distance, there is some assistance from your neighbours.**

People all over Kingsclere have volunteered to run essential errands and you should have already received a card like the one below through your letterbox with a neighbour's phone number.

If you did not receive a card or if there is no response after trying a few times, please phone one of the numbers below. Please do NOT phone for health advice – we are just your neighbours trying to help and can't advise.

If you are able to volunteer to help with even an occasional errand or to be responsible for part of your road, please contact the number on the card or one of the numbers below.

07733 164261	Helen	074850 83874	Christine
07568 462197	Tracey	01635 298940	Susan
07881 812788	Nicki		

## Care Workers

Kingsclere has a more elderly population than the Borough as a whole which means we have a great many people needing help as they, inevitably, have age-related problems. Because those people are less mobile, they are often unseen by the general population. Many of these villagers are supported by care workers.

This current Covid-19 crisis has placed considerable pressure on these workers and providers. Kingsclere is fortunate in that we have a large provider right on our doorstep based at Kingsclere Park. Bluebird Care employs about 100 careworkers in the North Hampshire area and is run locally by Phil Miles and John Prendergast. Phil reports that it has been a challenge to maintain continuity of care due to the importance of workers taking time off due to suspected contact or cold-like symptoms. However, they have coped with these problems and have seen an influx of people looking for jobs in this sector as those candidates have struggled to keep jobs elsewhere.

A new venture they are commencing is providing rapid response, emergency care to people in their own homes. Patients with acute medical conditions such as injuries from falls and UTIs can be treated in their own home, rather than having to be admitted to hospital where the emphasis is on treating those suffering from Corona virus.

## Basingstoke & Deane Borough Council COVID-19 - Bins and recycling

**From Monday 20 April 2020, waste collections will be temporarily reduced to protect the service and bin crews**

We are changing how often we collect your bins during the COVID-19 outbreak. This is a temporary change and we will keep this under review and resume normal collections as soon as possible after the government restrictions have been lifted and we can safely do so. Five out of six local authorities across the country already have a waste collection service every other week – ours is a temporary change during the pandemic.

From the week commencing Monday 20 April please only put out your green recycling bin and glass container on your normal recycling collection date and your grey waste bin out on the opposite week. If you are confused you can put out both bins and we will only collect the correct one.

We are sorry for the disruption and thank you for your understanding and ongoing support during this difficult time.

**A message from Cllr Hayley Eachus**

### Key points:

This is a temporary change.

If you have a grey 140 litre waste bin you can leave out two additional bags for collection.

If you have a grey 240 litre waste bin this will be sufficient and no additional bags will be taken.

If you have a large family in your home you can [apply for an additional bin](#) if you do not already have one.

Assisted collections will continue.

Clinical waste collections will continue.

Recycling and glass collections will continue.

Please recycle – check you are recycling everything you can and get the whole house involved. Visit our [recycling webpages](#) to find out what you can put in your recycling bin.

Start looking at how much waste you throw away and how you can reduce this.

Start squashing your waste like yoghurt pots to maximise the capacity of your grey bin.

Love Food Hate Waste – never before has it been so important not to waste food. Visit the [Love Food Hate Waste website](#) for some great tips and advice.

### CAMARADERIE

We are due to have a meeting on Wednesday, June 3<sup>rd</sup> at 2.30pm. We are not sure at the moment whether this will take place. It depends on Government guidelines. There will be more information in next month's Tower. Many thanks and keep safe.

**Sarah Davis 299546**

## Local Shop Information

**We are all extremely grateful to the extraordinary hard work that the local shop keepers and their assistants are putting in to make life easier for villagers. Here is an update on our local stores**



### Swan Street Stores/Spar

They have always offered a delivery service to elderly or disabled residents, and have expanded that now. The telephone line is open 9am-12noon, Monday – Saturday to place orders which they will deliver or volunteers can pick up and deliver. Neighbours are shopping for each other and many roads have volunteers helping their neighbours with errands.

**To order please phone 01635 297035.**

Four customers at a time are allowed into the shop and there are brollies for waiting customers if needed. There is hand sanitizer for customers and the staff are cleaning and disinfecting the counters and other surfaces frequently. Customer count is roughly the same as previously, but people are purchasing more each time so that they don't have to shop as often.

The shop is receiving more deliveries than normal because Spar doesn't have everything needed (as of writing mid-April); the panic buying in late March upset the supply chain and it may take a few more weeks to get back to normal. There are still fresh fruit and vegetables delivered 6 days a week and basics like milk, bread, and eggs are all in good supply now.

The Post Office currently has reduced hours which are posted the shop window and on the Parish Website. This is reviewed and updated every week. A message from Raj – As a community, the village has played a vital part as volunteers for either the door duty (to make sure no more than four customers at a time are in the shop), deep cleaning the shop every weekend, delivering the essentials to the vulnerable and those who are isolating. They have done this without any fuss. A big thank you to all of them, and a big thank you to all the customers who managed to keep social distance to help beat the Covid-19.

### The Village Butcher

Nigel has slightly changed the hours to close earlier some days.

Monday & Tuesday 8am-4pm; Wed 8am-1pm; Thurs & Friday 8am-4:30pm and Sat 8am-1pm

There are only two customers allowed in the shop at a time and Nigel and his team are doing everything they can to help.

### The Kingsclere Pharmacy

Mr Butt reports that it is a challenging time with more prescriptions than usual perhaps because people are ordering repeats sooner than normal but that he and the staff are coping. They are observing distancing in the shop and people can collect prescriptions for vulnerable neighbours and friends which has been happening a lot. If you don't have someone to collect your prescriptions, the NHS will arrange for a volunteer.

### McColls

McColls is observing the 2 metre rule, and only allow two customers in the shop at a time. Hours are normal as of mid-April and are expected to stay that way: 6am-10pm Mon-Sat, 7am-10pm Sunday.

## In the Time of Pestilence. An Early Pandemic



Whilst we are all in unknown times, it is interesting to reflect on two pandemics that affected Kingsclere in the past. In the fourteenth century, Kingsclere was hit by the Black Death. It is estimated that it killed 30 to 45 percent of the population of England. In Kingsclere, it is recorded that two vicars died within fourteen months of each other in 1348-49. The village population was severely affected and during this period fire destroyed the church tower.

Kingsclere was one of the worst hit towns in Hampshire during the plague 1665-1666. The plague first appeared at the end of 1665 but became more acute in the spring of 1666. It is believed that its spread was linked to landowners moving out of London and bringing the plague with them. The Parish Register is blank for the period from November 1665 to May 1666 except for a note in Latin stating that "many died at this time of pestilence and were buried in the fields and that Kingsclere was grievously punished." The reference to the fields probably refers to the Marsh [the area of land on the A339 between the roundabout and The Star]. We know that Pest Houses were built in the 1660s, probably on the Marsh. During the plague there is a record of three graves being dug 'in ye marsh' and for men to move sick people to the marsh. Boys were also paid to dig pits for the rubbish from the Pest Houses. The sick were moved there by cart. Those who died were buried on the Marsh in coffins lined with bricks. The buildings were fumigated by burning large quantities of horse hair.

At this time there was a system of care and provision in place for the afflicted. The Overseer of the Poor and the Churchwardens were empowered to impose a rate on land and property owners and to give the income to the families of the victims. As the situation worsened, and four rate collections had already been made, it was decided to seek outside assistance.

In the first days of the epidemic, Betty Read lost her widowed mother but apparently acquired immunity to the infection herself. When the plague was at its height, Betty spent long hours tending the sick in the Marsh, watching them day and night and preparing the bodies for burial. She did all this voluntarily and after the plague was over, she received the sum of £2 3s 6d. She became known as Elizabeth Read 'the pampered pauper of Kingsclere' as she also received beer as well as the usual butter, cheese and meat.

**Reference: Kingsclere News, articles in the late 60s by Dr Bull.**

**Richard Croft Kingsclere Heritage Association**





The Fieldgate Centre is run by the Kingsclere Community Association as a charity (No. 1168366). The association is made up of volunteers who rely on the support and participation of the community.


It is heartening to be part of the Kingsclere community. Individually we are witnessing kindness and mutual support in these challenging times. There are a wide range of community groups and activities in Kingsclere that have come to a grinding halt. However, the bonds formed in the broad fabric of the community during normal times will see us all through the current crisis.

We look forward to welcoming back those of you who regularly benefit from the varied activities that take place at the Fieldgate Centre including: Ceroc dancing, short mat bowls, badminton, Pilates, high intensity interval training, Clubbercise, exercise classes and Slimming World. Also Kingsclere's sports teams that use the centre as a base will be back in force with training sessions and fixtures: the rugby football club, which have a thriving mini-rugby section, the men's football club, the ladies football club, the youth football club and the cricket club who, as well as the senior team, run several younger age group teams.

For those of you who have had to cancel or postpone your special event planned at the centre, such as birthdays, engagements, anniversaries and weddings, we hope to welcome you back when you will be able to dance the night away in celebration with family and friends.

Hundreds of children enjoyed the play days last year and we plan to repeat them during the summer if the restrictions are lifted in time. The social Monthly Meet Up @ The Fieldgate has become a regular fixture in the calendar and this will be restarted when we know it is safe. The popular disco and KCA's own calendar of entertainment will resume as soon as possible.

We have had to take the inevitable decision to postpone the Watership Down Run that we were planning to hold on 12 July. If we can, we would like to hold the re-arranged event later in 2020.

One of the KCA's challenges is finding sources for grants to keep the building up to scratch and run some of our community events, as hire charges and bar income only cover the community centre's basic running costs. We are part way through our £460,000 programme of much needed improvement works. Having replaced all the windows, modernised the toilets and replaced the lighting, the next phase is a heating and electrical upgrade. website: [www.thefieldgatecentre.co.uk](http://www.thefieldgatecentre.co.uk) tel: 01635 298497 email: [fieldgatecentre@btconnect.com](mailto:fieldgatecentre@btconnect.com) facebook 

## Kingsclere Royal British Legion VE Day 2020



On the 8<sup>th</sup> May 1945, the Allies celebrated the defeat of Germany following the surrender agreements the previous day. This formally recognising the end of World War 2 in Europe and is known as "Victory in Europe Day" (VE Day). Victory against Japan did not come until August of that year. After 6 years of conflict and at the cost of millions of lives, Europe was freed.

Celebrations took place across to globe on the 8<sup>th</sup> May 1945 with over a million people massing in Trafalgar Square and Buckingham Palace where King George VI and Queen Elizabeth accompanied by Winston Churchill appeared on the balcony to greet the crowds.

We must, however, also reflect on those from the village, whom we remember each Armistice Day and who paid the ultimate sacrifice; Sgt G N Theobald, RAF; Lt P R Sperling, Welsh Guards; Chaplain C J Hawksworth, Chaplaincy Corps; PO E J Knowles, RAF; FLt R G Layley, RAF; PO G C Layley, RAF; Pte R F Fiddler, Sussex Regt; Volunteer S Pocock, Hampshire Regt; John Hughes (no further details known).

By reading out their names, they will live on forever.

The village RBL events planned for VE Day have sadly been put on hold for the time being. However, planning is underway to conduct a joint VE and VJ Day event once the current restrictions are lifted.

Your branch of the RBL have been busy upping the number of welfare calls and support whilst maintaining current government directives. This includes collecting and delivering supplies and medication to our members, online quizzes, a monthly newsletter in lieu of our monthly meeting and by providing support to the other superb organisations across the village. We intend to take part in a virtual RBL National "Tea Party" on the 8<sup>th</sup> May, bringing together countrywide branches in an act of celebration and remembrance.

The RBL is there for its dependants during these difficult times and can provide medical, financial and other support to its beneficiaries.

Although our monthly meetings (every first Tuesday from 7pm at The Crown) are suspended, much of our activities can be viewed on our Facebook site; "Kingsclere Royal British Legion" Contact me through that site and I can then add you to the group.

There is no need to be ex-military to join the RBL. Details of all our events are on our Facebook Page.

**Mark Holden**  
**01635 628004**

## Friends of St Mary's Kingsclere

Friends of St Mary's Kingsclere Ltd (FOSM) was established in 2001 as an independent Charity to give people who value our ancient parish church at the heart of the village - including those who otherwise might not be active as part of the Church community - a chance to contribute to the preservation and maintenance of the fabric of St Mary's. Under our constitution, FOSM may not give funds towards the day-to-day running of the Church, nor to the Parish share of the Diocesan quota, but we are able to make significant financial contributions towards work on maintaining and restoring the actual structure of the building.



FOSM raises funds by subscription and by organising a varied programme of events, with the joint aims of helping with the cost of present repair works and of building up a fund to meet such needs in the future. To date, we have already made grants of some £110,000 for the Church fabric, including part-funding the replacement of the creaking ancient boilers, major roof repairs, specialist restoration of weathered or damaged stonework, £32,500 towards the complete overhaul of St Mary's electrical wiring and lighting systems, £14,000 towards the redecoration of the Church, and most recently some £4,180 towards the re-roofing of the South chancel. We also have an outstanding pledge to give up to £8,000 towards the replastering of the Kingsmill Room once the damp problems there are resolved.

Unfortunately, the present Coronavirus emergency has already led to the postponement of the biennial Art Exhibition, whose organisers generously make a major donation to FOSM, and to the cancellation of our popular Plant Sale held jointly with the Kingsclere Gardening Association. Inevitably these changes will have a major impact on our fund-raising this year and we will need to redouble our fundraising efforts once we get through the current crisis.

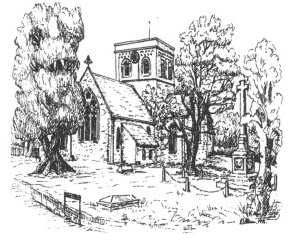
**Anyone is most welcome to become a Friend.  
Please consider joining us in this very worthwhile cause where you can play a part in safeguarding this important and much-loved landmark.**

The modest annual subscription is £10 a year for individual membership, or £20 a year for families; (please contact Alan Denness, by 'phone on 01635 298376, or by e-mail at [alandenness@btinternet.com](mailto:alandenness@btinternet.com)). We also very much welcome ideas for, or offers to help with, our fund-raising activities.

**Peter Turner, Chairman**

## Reflections

“Why is this happening? Why so much suffering? Why God are you letting this happen? Why? Why? Why God?” I wonder if you might be asking such questions having faced such a devastating last month as our nation has been rocked, and as many lives have been impacted, and sadly lost, because of the Coronavirus pandemic. Perhaps the daily statistics and tragic stories have made you question what you believe. It may even have shaken your belief in God or confirmed your belief that there is no God.



And it's a question that we Christians cannot easily answer. We live in a world that is broken, that's not as it's meant to be, that is not as God intended. And yet where does that leave us with our belief in the Almighty and all loving God? Is He just standing by whilst all this is going on, safe in heaven away from Covid-19? Perhaps he's waiting for it all to blow over so that it can be business as usual. Does He even care?

It's quite easy to accuse God of these things when we think of God as some distant, far off being, not interested in us. But that is not the God that I believe in; it is not the true God, it's not the God we see at Easter, which we celebrated a few weeks ago. No that God is not One who sits far away from us as we suffer but One who experiences it as well, who decides not to avoid it but to go through it, who doesn't give Himself immunity but suffers brutal violence and humiliation in His Own Body.

We may not have an easy answer to the pain and suffering in the world, but we do have a God who knows what it's like, who suffers it with us, who feels it as we go through it because of His awesome love for each one of us. And we do have a God who goes through the horror of death on a Roman cross, so that eventually the pain, suffering and death in this world can come to an end.

As we face this unprecedented situation, I'm told that many are turning to prayer even to a God they do not believe in. Keep praying because God hears, knows the pain, and longs for it to end.

If you want to hear more about this God, then please do click on our live stream Sunday service at 10 a.m. on our church website or get in contact. If there's anything else we can do to help, please let us know.

**Blessings, Ben**



## St Mary's Church

Our church building has been closed since 22<sup>nd</sup> March, but the Church is God's family, and isn't restricted to one place. We have had to completely re-imagine what we do and would love you to join us!

### Services

We are live-streaming a time of worship each Sunday at 10am. See the homepage of our website for the link



When the current restrictions are lifted, we will of course return to the church building for worship on a Sunday. Please see our website for the most up to date information.

### Prayer Meetings & Bible Study

Our life groups and Youth Bible Study have been meeting via Zoom to worship, study the bible and pray. If you'd like to join in, or have a request for prayer please contact Emma Rivers (details below)



### Holy Week

Celebrating the events of Holy Week this year and reflecting on the events leading up to Jesus' death and resurrection has certainly been different this year. Rev Ben recorded daily reflections on readings each day. They are still available on the website if you would like to watch them.

### Children's Groups



During our usual weekly services, our children meet to worship and learn about Jesus in their own way. Although we are live-streaming a service each week we were keen to show our children that we are thinking of them, and provide some resources for them to do at home. We are now sending out over 40 packs a week to the children that usually come to church with bible passages, craft activities and occasional treats. This fantastic donkey was

made on Palm Sunday by Evelyn.

### Food donations

We have received donations of food and toiletries/household products which we are able to give to those in need. If you are able to donate any dried or tinned goods or household/laundry products please get in touch with Emma (details below). If you know of someone in need (or are in need yourself) of these items please contact Emma to arrange delivery.

### Prayer and Friendship

We have a team of volunteers who have offered to be available to speak to those who might need a phone call. Perhaps you are isolating at home alone and just want to speak to someone occasionally? Perhaps you would like someone to pray with? If so please contact Emma (details below) who can put you in touch with someone.



We are here for our community now, as always. Please do get in touch if there is anything we can help with.

### Contact Us

Rev Ben Read: 01635 298471 or [vicar@stmaryskingsclere.co.uk](mailto:vicar@stmaryskingsclere.co.uk)

Emma Rivers (administrator): 0779 0934972 or [administrator@stmaryskingsclere.co.uk](mailto:administrator@stmaryskingsclere.co.uk)

[www.stmaryskingsclere.co](http://www.stmaryskingsclere.co)

## Lighting up St. Mary's

The sight of St Mary's Church when it is floodlit is truly beautiful. Many people sponsor these lights (£12 per evening) to celebrate an occasion, such as a birthday, wedding, anniversary, christening, or some other special day in their lives. To book, contact Emma, our Church Administrator on 0779 0934972.



**April 13<sup>th</sup>** In loving memory of our son, Richard. With love Mum and Dad x.  
**May 4<sup>th</sup>** Loving memories of Moira on her birthday.  
**May 31<sup>st</sup>** Remembering our dear Mum, Grandma and Great Grandma on her birthday.

## Knit and Natter

Knit and Natter started in Kingsclere in the late Spring of 2019. It followed a survey done by St Mary's Church, which showed that some people in the village would like a chance to get out of the house and share – or learn - a popular hobby with others.



We meet from 2- 4pm on the last Wednesday of every month in the Kingsmill Room at St Mary's. Just turn up any time – you will get a warm welcome and a drink and biscuits.

No previous skill is required in order to join us, just come and watch, knit and/or chat or learn if you like. There's a lot of expertise to share – both in knitting and crocheting (and nattering!!).

After several months of producing a variety of different items, we are currently concentrating on two or three main areas. We are delighted to be supporting the Basingstoke charity 'The Safe', which offers help support for single parents. Any type of knitted item is currently very popular and in great demand – jumpers, hats (for all the family – from baby to dad), scarves, mittens: all of which have all been in great demand during the winter. We also make knee blankets, made up of squares\*, for use in hospital or nursing homes. Other popular items are our beautiful 'twizzle muffs': which offer people with dementia the opportunity to talk and reminiscence with friends or carers, as they feel and finger the different items within the muffs. They are a real work of art – come and see them before they move on. Who knows when we will meet again...watch this space and notices on the St Mary's Notice Board. Hope we might see you there, whenever that might be.

\*Should you wish to contribute to the making of squares for blankets whilst in lock-down....double knitting, size 8 needles and 30 stiches in garter stitch....any colour.

Please contact Maggy Wallace on [mjwwatershipdown@msn.com](mailto:mjwwatershipdown@msn.com) or 01635 298974 for further details.

## Nature Notes

There is movement across the windowsill and likewise the kitchen top and suddenly there is movement everywhere, Oh no! It is **ant time** again. Ants are admirable creatures, they are strong, industrious and disciplined but also numerous and already scouts are returning to disclose to others the fastest route to the sugar bowl and that biscuits are to be found in the righthand cupboard. The garden has unlimited opportunities for ants to find a Des. Res. near the compost heap perhaps or beneath the flagstones, but it is always the warm, sunny kitchen that is the number one choice. Well, they will have to go and, to quote Macbeth, "If it were done when 'tis done, then 'twere well it were done quickly." Goodbye until next year then.



Restricted access to country walks found us on a 2-metre apart walk just before self-isolation arrived. It was punctuated with eye catching clumps of primroses and purple violets with scattered colonies of white ones also. Coltsfoot in full flower and the promise of cowslips to come confirmed that nature carries on regardless in spite of the current serious health crisis.

After a serious population decline due to an infectious disease it is good to see and hear greenfinches again. Familiar visitors to the bird table at one time, they were notorious for being the guest who outstays his welcome by occupying the feeder perches overlong to the frustration of smaller birds. Chaffinches seem to be harder to spot recently.

**Diana Tait and Rod Eldred**

## CHURCH CONTACTS

### St. MARY'S CHURCH:

**Vicar** Rev Ben Read, The Vicarage, Foxs Lane 01635 298471

### Church Wardens:

Andrew Kitch [andrewkitch16@gmail.com](mailto:andrewkitch16@gmail.com) 01635 299743

Sarah Mussett [sarah.mussett@hotmail.co.uk](mailto:sarah.mussett@hotmail.co.uk) 01635 291900

### Administrator:

Emma Rivers  
[administrator@stmaryskingsclere.co.uk](mailto:administrator@stmaryskingsclere.co.uk) 07790 934972

### METHODIST CHURCH:

**Chief Steward** Wendy Morgan 297538

**Secretary & Hire of Hall** Jeanette Billington 297585

**ROMAN CATHOLIC:** Rev Patrick Tansey 0118 981 4572

[tadley@portsmouthdiocese.org.uk](mailto:tadley@portsmouthdiocese.org.uk)



## Kingsclere Community Library



As you probably know, as of mid-April, all county libraries are now closed, including ours.

If you would like to borrow books, you may download to **read online** using your library card.

Please go to the website - <https://www.hants.gov.uk/librariesandarchives>

For Kingsclere residents unable to read online, wanting to borrow books, please email us at [kingsclerelibrary@gmail.com](mailto:kingsclerelibrary@gmail.com) or phone 07899 623872. We will arrange for SAFE collection of your library card and leave books outside your door. This is a limited service, please be aware we may not be able to service a large number of people.

Would you like a **Jigsaw puzzle**?

You may collect and leave jigsaws just outside the Swan/Bel & Dragon pub, between 10am-5pm daily. There is a table in the car park near the pavement. Library cards are not needed. Feel free to take what you want and return it when you are done admiring your completed puzzle. You may also donate any puzzles as long as no pieces are missing. The collection will be updated daily.

The Hants County Council had planned to announce their decision about library closures in June; this is now postponed.

Please visit our Facebook page for news and activities for children.

**Nicki Lee, [kingsclerelibrary@gmail.com](mailto:kingsclerelibrary@gmail.com) 07899 623872**

200 200 200 200 200 200 200 200 200 200 200

**Entries drawn first week of each month, various village venues.  
St Mary's 200 Club Winner April 2020,  
No 26, Michael Walker**

**Well done, Michael**

## Living Paintings

**An appeal for your help during this challenging time**



Living Paintings, a national charity based in Kingsclere, create and publish special books for blind and partially sighted people of all ages. Our award-winning charity provides Touch to See books through a completely free of charge postal library. Our work is supported by amazing volunteers, many of whom live in and around the village.

The coronavirus crisis is having a devastating impact on our beneficiaries – these are people of all ages who are already isolated due to their sight loss but who are now further isolated through the lockdown. We are able to help them and **we are still operating, sending out our unique Touch to See books to blind and partially sighted children and adults at home via the post.**

Eight year old library member Tayen is blind and going through chemotherapy. She and her brothers are isolating with their mum and dad at home. Tayen was over the moon to receive two boxes of new Touch to See books from Living Paintings, she wasted no time getting all of the books out!

Tayen's mum says *"I can't explain just how happy those boxes made her this week. Tayen doesn't cope well with any changes to her routine so was very upset but she knows what these boxes of books are and I know she felt comforted and reassured by them".*

**Please support us by donating today** and help us to continue to reach Tayen and thousands of other blind and partially sighted people during this crisis and beyond:

[www.crowdfunder.co.uk/urgent-appeal-to-help-isolated-blind-people](http://www.crowdfunder.co.uk/urgent-appeal-to-help-isolated-blind-people)

Or by calling **01635 299 771**

**Sadly due to the Coronavirus pandemic we have cancelled two fundraising events this summer:**

**The Botanics Lounge Gin Night at the Fieldgate Centre (originally 6<sup>th</sup> June) and**

**Living Paintings Charity Golf Day at Donnington Grove (originally 1<sup>st</sup> May)**

Both events will be re-scheduled later in the year – we'll keep you updated.

**Annie Dickinson [annied@livingpaintings.org](mailto:annied@livingpaintings.org)**

## Kingsclere & Headley Woodlands WI

Village Club, 35 George Street, Kingsclere



Like every other group in the Village, indeed in the country, the Women's Institute has suspended all meetings for the foreseeable future. However, that doesn't mean we are not in touch with each other and ready to help any of our members.

The WI is not all 'Jam & Jerusalem'. There is considerable variety. Firstly, we do have a local meeting every month of the year except for August. The presentations we enjoy during these 'regulars' are done by speakers booked by Programme Secretary Nova Saunderson and they range through subjects of all kinds. Always interesting, they can be educational, entertaining, often very amusing and sometimes they are all of those things combined.

Additionally, we have two seasonal group meetings each year when we link up with the other three sister-institutes in our Hampshire North Downs Group. The WIs take turns hosting these special events and the speaker hired for each of these can be termed 'special' also.

Above and beyond the standard programme we've enjoyed more informal get-togethers until very recently such as going out to lunch at least four times a year. Once the nation (and the rest of the world) settles down to something approaching normality, we will also be able to resume a regular monthly game of skittles + lunch at an outside venue. Then there are annual 'outings' arranged whenever possible, some further afield than others. Last year we visited Chichester by tour bus for the day, calling at Portsmouth on the way down and stopping at Siddlesham for afternoon tea on the way home. Altogether one totally enjoyable day.

We strive to offer women in our environment the opportunity to mingle with friends & acquaintances on a relaxed basis, thus preventing loneliness from setting in by keeping in touch with the outside world. Why not visit us when all clubs reopen? I can assure you that we would love to see you and will give you a very warm welcome.

**Margaret Geary President  
Kingsclere & Headley Woodlands WI**

### **SADLY CANCELLED**

St Michael's Hospice Coffee Morning  
Saturday, 6<sup>th</sup> June 2020

Due to the current situation it is with much regret that I have decided to cancel the coffee morning on 6<sup>th</sup> June. Please note that the Autumn date of **Saturday, 7<sup>th</sup> November** will hopefully go ahead as planned.

**Sarah Melling**

## Kingsclere Village Bunnies Baby and Toddler Group



We want to start by sending our best wishes to all our bunnies and their families. At the time of writing, we are in the middle of the Covid-19 crisis and it is hard to guess where we will be come May. We know how challenging it can be entertaining young children at the best of times, so we hope that you have all managed to keep smiling during this period and can come back to Bunnies as soon as possible. We will keep updating our Facebook page and you will be the first to know when we can get back to the Village Club for some much-needed play, tea and chat.

In the meantime, here are a few ideas from bunnies for things to keep the children entertained if we are still all house-bound:

Scavenger hunt – around the house or garden. Make a list of items to find, they could be all the same colour or begin with the same sound for older children.

Get messy – shaving foam, cooked spaghetti, coloured rice, jelly, frozen toys in ice are all good fun!

Squishy pictures – put some shower gel into a zip-lock bag with some glittery bits, sequins, beads or other little shapes. Seal the bag and draw a picture on the outside (robot, princess etc.). You can then squash the glittery bits around inside the bag to decorate the picture.

**Where: The Village Club, George St**

**When: every Tuesday, 9am-11am**

Cost: first visit free. After that, £1 for bumps and unweaned babies. £2 for first child (including snack donated by Swan St Stores) and 50p for additional children.

Check out our Bunnies Facebook site – as well as our local buying and selling site "Kingsclere Bunnies Preloved", where local mums often have bargains to pass on.

**villagebunniestoddlergroup@gmail.com**

Film Club regulars, while screenings are suspended there are two things you could be doing.



First of all, it is this time of year that we start thinking about the programme for next season. If you have any suggestions for the 2020-21 season, let us know. Remember we look for a balance of genres and periods: musical, comedy, drama, thriller, romance, and, of course, the 'sunny' film for January.

Secondly, if you have a DVD player, we are happy to lend out films to our regulars. Paddington or Paddington 2 will cheer up a dull afternoon as will the two Mama Mia movies. Finding Your Feet or Lion might also appeal. Other popular titles have included....

Midnight in Paris, The Pianist, Il Postino, Florence Foster Jenkins and The Third Man.

We have many more, so get in touch, we'll drop a disc through your letterbox and you can settle down with the popcorn or a glass of red!

**Contact: John Sawyer (Chairman) 297221 or [jrsawyer@hotmail.co.uk](mailto:jrsawyer@hotmail.co.uk)**

## Kingsclere Gardening Association

Like all clubs/organisations in the village we have had to cancel the events we had planned for this month. The first event was the Spring Show to be held in the Village Club on Easter Sunday. This is always one of our best functions of the year and very popular.

Daffodils have been especially good this year and I hope the bulbs bought by members flowered well and gave pleasure. A pity they could not be displayed.

The next event we were involved in would have been the plant sale in the churchyard along with FOSM. Plants have already been grown for this and seeds bought and sown. For those who expected to buy plants there I expect a phone call to the growers could locate plants to be collected from a safe area. I have tomatoes and will still sow runner beans to spare.

Our planned open gardens event in the village has been called off as will the outings. Hopefully, if we are lucky, we can go ahead with our show at the Fieldgate in August.

Doubtless many gardens have benefited from extra time and may-be your efforts will help feed the mind and body

**John Eckton 01256 850017**



## Gardening Notes

### May In The Garden

The gardens should be looking their best this month. The trees are in full leaf giving a backdrop to the Spring bedding flowers especially the tulips, alliums, foxgloves, camassia and many more.

Late frosts are still possible, which can spoil fruit trees and many tender plants. My early hostas often need protection. Hail is possible which will shred the leaves. We still could have snow but with climate change, it doesn't happen so much these days.

With the warmer weather keep new plants in well-watered pots. The dreaded vine weevil will lay eggs if the conditions are dry. The eggs will develop into grubs which will feast on the roots of the plant. If found, dispose of the soil as soon as possible. Do not put the offending soil on the garden, as the grubs will cause a lot of damage to other plants in the garden. Bin it! The secret at this time of year is to keep watering and feeding. There will also be plenty of weeds growing through so it's time to get the hoe out and get rid of them before they seed.

Some shrubs will have finished flowering such as the early flowering Spiraea. These can be cut back now and pyracanthas can be pruned. Tie in climbers. Clematis will take over the flower bed if not controlled. If you have Clematis Montana now is the time to prune. This is the time to put supports in place for those tall growing perennials.

Don't forget to deadhead spring flowering bulbs and feed to encourage good flowers for next year. Cut back alyssum and aubrieta. If left these trailing plants will become bare in the centre so trim back hard and they will soon send out fresh growth and will stay tidy.

Sow biennials now, sweet Williams, wallflowers and foxgloves.

The lawns often need mowing twice a week, so feeding is recommended with all the extra growth.

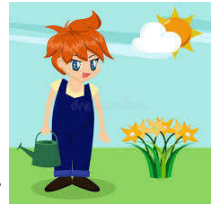
Sow runner and French beans. These can be grown outside if wished. I rather like the climbing French bean 'cobra'. Plant out leek plants. Also plant marrows and courgettes. Time to plant brassicas, netting them if possible as the birds and caterpillars will destroy them.

Pinch out the tips of broad beans when they flower to discourage black fly. If lockdown continues and we are unable to buy from the garden centres we may need to spray the black fly with soapy water to try and control them. The strawberry bed will need attention. The runners can be removed and straw or mats should be put round them. Also if not already done, prune raspberries.

This really is the best month in the garden, although there is plenty of work to be done, do take time to enjoy it.

Happy gardening!

**Denise Allen .**



## Say NO to Plastic!

How you can cut plastic and save the world during lockdown? Is plastic a problem in your house at the moment or always?

Well, if so, here are a few things you can do to reduce the amount of single-use plastic you are throwing into landfill. As handy as it is to use cling film, don't! Try making your own beeswax wraps because they aren't just multi use, they are also environmentally friendly.

Do not buy any plastic straws but by all means feel free to grab some paper ones.

Did you know there is such thing as a bamboo toothbrush? Well it is definitely worth getting and doesn't affect pandas at all. You can buy them without even having to leave your house as you can get them from Amazon.

Try and avoid extra food packaging and if you can't, don't worry because you can either reuse reduce or recycle

You can reduce ♻️ by starting to grow your own.

You can use carrier bags for waste instead of bin bags, that way you are adding a second purpose to your item.

Say "no" to plastic cutlery it doesn't do any harm to do a dishwasher every now and then as long as it is full and as we are all at home we will all have metal knives and forks to hand.

As many of you like glitter, I am not saying it is the worst thing in the world but what I am saying is that it is also very lethal to our oceans but you can carry on sparkling as there is biodegradable glitter available in England

If you wish for any more hints and tips on plastic reduction feel free to visit [PlanetsBestFriend.com](http://PlanetsBestFriend.com) and I will be happy to help.



Sophie Auld

Kingsclere Primary School Year 6

## Hail our Heroes!

**Do you know someone who deserves particular thanks for helping during the Covid-19 crisis?**

**Let us know and we will acknowledge them.**

**Do you have an interesting story to tell about self isolation?**

**The difficulties, the problems, may be even the humour?**

**What you might do when you can escape!**

**Tell Us!**

**Contact [kingscleretower@gmail.com](mailto:kingscleretower@gmail.com)**



While everyone is at home at the moment, it seems a good opportunity to reflect on some of the things we learned at our

Information Points that we had at our Sustainable Market on 14<sup>th</sup> March.

Three ladies from B&DBC made up a **Love Food Hate Waste** team. They handed out food measuring tools and recipe cards for simple family meals made with store cupboard or leftover items. In these times when we are making fewer trips to shops/supermarkets for a smaller selection of fresh and tinned goods, these tips are invaluable. There is a website [www.lovefoodhatewaste.com](http://www.lovefoodhatewaste.com) with food storage tips, recipes and other suggestions.

We were also joined by a volunteer from the **West Berks Repair Café** who discussed the types of everyday household items they're often able to repair (for donations) at their monthly events, usually in Thatcham or Newbury locations. These items include toasters, CD players, vacuum cleaners, and many more, saving many things from a life in landfill, not to mention saving money buying new!

Our final guest was Maddy from the **Ecchinswell Eco Hub**. She was able to demonstrate a range of products she is able to recycle, mostly within the national Terracycle scheme, such as toothpaste tubes, spray dispensers from household cleaners, crisp packets, chocolate wrappers etc which cannot be recycled as part of normal green bin waste.

When we are able to schedule our next market, we hope to invite more of these types of organisations along to share ideas and schemes to enable our village to continue building our green skills. In the meantime, keep following us on Facebook, where we continue to share ideas, and will promote local eco events and businesses once some sort of normality resumes.

We would also love to set up a **Repair Café** in the village in the future, possibly monthly. Are you someone who likes 'tinkering' and fixing electrical items? Or do you have dressmaking skills eg zip replacement, small repairs and alterations? And other 'repair' skills that we haven't thought of?! Do get in touch if you would like to offer your services. Stay safe and well everyone, and keep recycling!

Sarah, Nicki and Lucinda  : [greenerkingsclere](https://www.facebook.com/greenerkingsclere)  
Email: [greenerkingsclere@gmail.com](mailto:greenerkingsclere@gmail.com)



## THE KINGSCLERE TOWER DIRECTORY

**Editor:** 3 Blue Meadow, Garrett Close.  
email: [kingscleretower@gmail.com](mailto:kingscleretower@gmail.com)  
**Advertising:** Brian Elborn ☎298704  
[b.elborn345@btinternet.com](mailto:b.elborn345@btinternet.com)

### **POLICE, FIRE or AMBULANCE** **Emergency 999**

Police Enquiries/Information **non Emergency 101**

**Kingsclere Health Centre:** 296000

**North Hampshire Hospital, Basingstoke** 01256 473202

### **Kingsclere & Ashford Hill with Headley Care Group:**

General Enquiries 01635 298794 *Transport only* 07388 539  
730

**Parish Council:** 37 George Street (see page 2) 298634

**Dial-a-Ride** 01256 462101

**Churches:** *see contact details within Church Pages inside*

Bas & Deane	01256 844844	Cub Scouts	298413
Buses	0345 8101000	Girl Guides	299875
Trains	0845 748 4950	Kingsclere Library	0300 555 1387
Gas Emerg.	0800 11999	Swan Street P O	297035
S.Electric	08000 727282	Vet	29557 or 40565
S.Water	0845 278 0845	Dentist	299981
Busy Bees	299566	Fieldgate Centre	298497
Chemist	298419	Village Club	297913

### **BOROUGH COUNCILLORS**

**Ken Rhatigan** 07850 530319 [cllr.ken.rhatigan@basingstoke.gov.uk](mailto:cllr.ken.rhatigan@basingstoke.gov.uk)

**Clare Kinnear** 07970 400864 [cllr.clare.kinnear@basingstoke.gov.uk](mailto:cllr.clare.kinnear@basingstoke.gov.uk)

### **COUNTY COUNCILLOR**

**Tom Thacker** 01264 738464 [tom.thacker@hants.gov.uk](mailto:tom.thacker@hants.gov.uk)

### **MP for N.W Hampshire:**

**Kit Malthouse** 01264 401401 [kit.malthouse.mp@parliament.uk](mailto:kit.malthouse.mp@parliament.uk)  
2, Church Close, Andover, SP10 1DP

**There is a more comprehensive list of local contact numbers on the  
Parish Council website. Go to [www.kingsclere-pc.org.uk/directory](http://www.kingsclere-pc.org.uk/directory)**