

# The Kingsclere Tower



May 2022

Your Village Magazine

# The Kingsclere Tower

EDITORS: Nicki Lee, Mike Stokoe and Stephen Steare  
ADVERTISING: Brian Elborn b.elborn345@btinternet.com  
DISTRIBUTION: Brian Elborn  
ASSEMBLY: Andrew Kitch  
PRINTERS: Kingsclere Design & Print Ltd  
LAYOUT/COVER: Steven Gaines

☎298704  
☎298704  
☎299743

The Kingsclere Tower is sadly saying farewell to Sarah Hewitt and Nicki Lee as editors. They have been editors for nine years since July 2013 and they will be sadly missed. Sarah has already edited her last Tower, Nicki finishes with the July edition. I especially remember the 50<sup>th</sup> anniversary edition of the Tower which looked back on the 50 years of production from the first copy in June 1965 written by hand by David Shearlock, the vicar. Sarah and Nicki produced it with myself doing the layout and it contained articles published during that time. It was a fine example of their editing.

I continue as editor now joined by Stephen Steare. We have two excellent layout assistants, Cathy Williams and Steven Gaines. However, the Tower is very much a team effort. Andrew and Brian work hard with the advertising and distribution, Sue Earl looks after the finance plus a small army of volunteers who deliver the Tower each month.

We are well aware that local news and activities are advertised and reported by many different social media these days but a magazine still has its place not least as it mixes news with useful local adverts. If you have any views on new ways you would like to see the Tower going, please contact us.

**Mike Stokoe (Editor).**

Neither the Editor, nor the Management Committee accept responsibility for the opinions expressed or the goods and services advertised in the Kingsclere Tower.

## **To all "Tower" Contributors**

Copy for **June** to the Editor at 23 Swan Street, Kingsclere, RG20 5PP  
or [kingscleretower@gmail.com](mailto:kingscleretower@gmail.com)

**NOT LATER THAN 12th May.**

**Will ALL contributors please include full name  
& home phone number/e-mail address.**

## KINGSLERE PARISH COUNCIL (KPC)

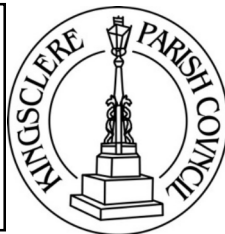
**Chairman:** Cllr John Sawyer (297221)

**Email:** [clerk@kingsclere-pc.org.uk](mailto:clerk@kingsclere-pc.org.uk)

**Telephone:** 01635 298634

**Office:** 37 George Street, Kingsclere RG20 5NH

**Public Opening:** Office is currently closed to public



**KINGSLERE'S GREAT BRITISH SPRING CLEAN** – we recently held another very successful Spring Clean morning and as you may have seen on social media, collected many sacks of additional rubbish. Thank you so much to all those involved in the organisation of the event and more importantly, thanks to those who came out in the sunshine and took part. Also, our thanks to St Mary's for providing refreshments for those in need.

**ANNUAL PARISH MEETING AND ANNUAL REPORT** – The Annual Parish Meeting this year will be on Monday 23<sup>rd</sup> May. The CEO of the Greenham Trust Chris Bolton has been confirmed as the special guest speaker and all residents are invited to attend. Reports from village organisations are welcome. Please ensure an electronic copy of your report is sent to the office so that it can be included in the Annual Report 2022.

**ROAD CLOSURE Jubilee Parade 4<sup>th</sup> June 2022 2pm-3pm** – The roads leading through the village from the William Holding Field down George Street, into Popes Hill, up to Field Gate Drive, will be closed for our Grand Jubilee Parade on the 4<sup>th</sup> June for about 40 minutes between 2-3pm. Please see Jubilee Poster for details on joining the Parade.

**LOCAL BOROUGH ELECTIONS** – At the time this goes to print we will be very close to the Local Borough Council Elections which are scheduled to take place on Thursday 5 May 2022. We are voting for one Borough Councillor in the Tadley North, Kingsclere and Baughurst Ward area.

**GRASS CUTTING IN CEMETERY** – Grass cutting will be resuming in open spaces in the village in April. KPC asks that grave owners ensure their plots are tidy and in line with the rules and regulations so our contractors can work easily. The Parish Council understand this can be a delicate issue, however the contractors have a job to do and no responsibility is taken for items left on graves.

**JUBILEE BUNTING** - Members of Kingsclere Parish Council are coordinating making bunting for use by community groups and organisations around the Village over the Queen's Platinum Jubilee weekend in early June.

The Parish website [www.kingsclere-pc.org.uk](http://www.kingsclere-pc.org.uk)  
@kingsclerepc facebook.com/KingsclereParishCouncil

If you would like to make your own, a bunting template with instructions is available and we will also be holding "bunting bees" at the Fieldgate Centre – details and the template are available at <http://www.kingsclere-pc.org.uk/>.

If you have fabric donations, could spare some time to attend a bunting bee, or wish to know more about this project, please contact Nicki Peach at [cllr.nicki.peach@kingsclere-pc.org.uk](mailto:cllr.nicki.peach@kingsclere-pc.org.uk).

**GREEN WHEELY BINS & GLASS RECYCLING** – the collections dates are Wednesday 4<sup>th</sup> May, Wednesday 18<sup>th</sup> May and Wednesday 1 June 2022.

**NEXT PARISH COUNCIL MEETING** – will be at 7.30pm on Monday 30<sup>th</sup> May 2022 in the Village Club, (unless otherwise notified). We welcome the attendance of all parishioners at our meetings and anyone who wishes to raise any matters of concern will be given the opportunity to do so.



## KINGSLERE NEIGHBOURHOOD PLAN

At the time of writing, there has been no further news on progress of the Local Plan review and the possible additional housing in Kingsclere. There is also no further news on the proposed development on Porch Farm but another developer, Thakeham, have contacted the Parish Council to discuss plans to build houses on land adjacent to Yew Tree Farm, Basingstoke Road. The PC will meet with developers to learn more of their plans.

The Neighbourhood Planning Group has reformed and met on 21<sup>st</sup> March. Notes of meetings will be published as appendices to the PC minutes which can be viewed on the PC website. The group will meet again on 16<sup>th</sup> May where we will discuss possible proposed changes to environmental policies. If any resident would like to be involved with the NP review we would be pleased to have you on board. Please contact me, details below.

Please keep checking the Parish Council web site and Facebook for further updates on the Local Plan review.

**Cllr. Sue Adams**

[Cllr.sue.adams@kingsclere-pc.org.uk](mailto:Cllr.sue.adams@kingsclere-pc.org.uk)



**Kingsclere  
Celebrates  
The Queen's Platinum Jubilee**

**Thursday 2nd June  
Queen's Platinum Jubilee Beacon**

Lighting up at sunset, 9.15pm  
Good views from Sydmonton Rd and footpath from top of Bear Hill

**Friday 3rd June  
Twinning Association Duck Race**  
Stream at foot of Pope's Hill, time tbc

**Street Party**  
The Crown

**Saturday 4th June  
Grand Parade Through the Village**

For all organisations and families, 2pm. From Holding Field to the Fieldgate Centre 1950s and Royal themed with prizes for the best costumes Register at [www.kingsclere-pc.org.uk](http://www.kingsclere-pc.org.uk)

**Platinum Jubilee Party**

Fieldgate Centre after the Grand Parade Prize giving, cake raffle,  
Bounce-for-Fun, live music  
Cream Teas and Exhibition of 1950s Life  
Watch the Grand Parade from the Village Club

**Sunday 5th June  
Platinum Jubilee Service and Bring & Share Picnic**  
10.30am St Mary's Church & Churchyard  
**24th May – 4th June**

**Children's Scavenger Hunt**  
The Library



The Fieldgate Centre is run by Kingsclere Community Association, a charity (No 1168366). All residents of Kingsclere over 18 are automatically members of the association, an organisation that relies on volunteers to run it. Be part of it, your support makes a difference.

**Events in May**

Polling Day	Thursday 5th	7am-10pm
NHS Blood Donor Session	Tuesday 10th	( <a href="http://www.blood.co.uk">www.blood.co.uk</a> )
Kingsclere Players AGM	Wednesday 11th	7.30pm
Monthly Meet-Up	Tuesday 17th	2.30-4.30pm
Racing Welfare Coffee Morning	Thursday 26th	10.30am-12.30pm
Ceroc Beginners+ Workshop	Sunday 15th	1.30-4.30pm
Classic Workshop	Saturday 28th	1.30-4.30pm
Freestyle	Saturday 28th	7.30pm-1am

**Jubilee Village Celebrations on Saturday 4th June** - Keep your eyes open for how to sign up for the 'royal' parade which will start at 2pm on The Holding Field and finish with a party at The Fieldgate Centre from 3pm. Music, food, fun and surprises for everyone!

**Sports Pitches** - Reseeding has been completed and a barrier installed to protect the turf and allow it to establish. Please keep to the path around the perimeter of the field. (Perhaps you could also clap your hands to scare off the pigeons!)

**Monthly Meet Up** - It's great to see more of you enjoying this popular social catch-up. Activities are optional and refreshments are provided. There is no charge to attend and we can arrange transport if you need help with getting here. Volunteer helpers welcomed.

**Weekly Classes** - Check out the timetable on our website and come along.

**website:** [www.thefieldgatecentre.co.uk](http://www.thefieldgatecentre.co.uk) **tel:** 01635 298497

**email:** [fieldgatecentre@outlook.com](mailto:fieldgatecentre@outlook.com) **facebook**





Kingsclere Village Club,  
George Street.  
Doors open at 7.00pm.

**Saturday, 14 May at 7.30pm**

**The Awful Truth**  
(1937 - A - 90 minutes - Oscar winner)

A married couple file an amicable divorce but find it much harder to let go than expected. Stars Irene Dunne and Cary Grant.

**Next Month: 11 June 2022**  
**Official Secrets** (2019)

Kingsclere Film Club welcomes guests at £7.50, subject to space.  
New members welcome at any time.  
For further information call John Sawyer (Chairman) 297221 or  
Diana Tait (Membership Secretary) 298494

## Kingsclere Community Library

The Queen's Jubilee - FREE Scavenger Hunt Game for children to celebrate the Jubilee!

Collect your Hunt questions/activity sheet at the library during opening hours, between Tuesday 24th May and Saturday 4th June. You will explore Kingsclere to find clues, answer questions and there are some things to find and make! Children may do this on their own or with their parents' help. Prizes for everyone who completes their 'Hunt'!

We have had our application for funding our core costs accepted by The Good Exchange. If you would like to donate and help keep our doors open, you may do so here: <https://bit.ly/3v9MnTr>  
Or go to The Good Exchange website and look up Kingsclere Library.

We still need a few more volunteers. Do you have some time to help once a month or more? Full training given.

HOURS	Tuesday & Thursday	1.00pm-5.30pm
	Saturday	10.00am-1.00pm

Nicki Lee, Library phone 01635 297464  
[Kingsclerelibrary@gmail.com](mailto:Kingsclerelibrary@gmail.com)   [www.kingsclerelibrary.co.uk](http://www.kingsclerelibrary.co.uk)



## KINGSCLERE VILLAGE CLUB

**Est. 1921**

**100 years and counting ...**  
**CHARITY 1189234**

### Jam first or Cream first?

We are inviting older members of the community (plus one or two guests) to join us for a **cream tea** at the start of the **Jubilee Parade on Saturday 4<sup>th</sup> June**. You will have the opportunity to watch the parade from outside the Club (chairs provided). We will be serving from 1.30pm and the parade starts at 2pm. This is free and limited in numbers so it will be by ticket only - please contact Helen (below).



### Life in the 50s

Do you have any photos or memorabilia that could be included in our exhibition of **Life in the 50s** as part of the Jubilee celebrations? If you or a member of your family has memories of the time, I would love to hear them.

### Quiz Time at the Community Café

Another of our very popular quizzes, open to all, just come along! Café open 10am - 2pm, quiz at 11am. Hot and cold drinks, homemade cakes, biscuits and other snacks all served with a smile!

### Midsummer Night's Dream

Please contact us to reserve your ticket for

**The Festival Players' Shakespeare in the Garden.**

**Tickets £22.50 with picnic beforehand or £15 performance only.**

**Saturday August 27<sup>th</sup>, performance starts 7.30 pm.**

Last year was a sell-out so don't delay!

Helen 297390 or [events@kingsclerevillageclub.co.uk](mailto:events@kingsclerevillageclub.co.uk)

Website <http://www.kingsclerevillageclub.co.uk>

Facebook <https://www.facebook.com/kingsclerevillageclub>

## Wolverton Village Market

**SATURDAY 7TH MAY. 9.30am until 11am**

Come and visit the Market which is held in Wolverton Village Hall. There are lots of stalls to browse including locally produced honey, fresh vegetables, antiques and collectables, cakes, bric-a-brac, plants, handmade cards, household items and handmade candles.

Admission is free and there is parking outside the Hall.

We look forward to seeing you.

For more information, please contact Tony or Julia Drake. 01488 608594



## Kingsclere and Headley Woodlands WI

35 George Street

We don't have a speaker this month as it is our annual meeting when the committee are elected and from that committee the president is elected for the coming year. Even though we won't be having a speaker on **13th May**, we would still love to welcome guests to our meeting where they can be sure of a very warm welcome.



The committee is currently working on choosing the speakers for 2022/2023, sometimes quite a difficult task as we need to balance the suitability of speakers with cost. They have to be interesting and, if they are also amusing and informative, that is even better.

To commemorate Queen Elizabeth's Platinum Jubilee, we have purchased a native Rowan tree which, with permission from both the church council and the Parish council, has been sited in the churchyard. We would like to thank Nicola Peach for her help, also her father, Ray Peach and Les Wallace for their assistance in planting the tree last month. Kingsclere WI are looking forward to seeing the tree mature and hope that it brings pleasure to people in the village.

**Margaret Geary President**  
**01635 297197**

## Kingsclere Bunnies

The Bunnies Easter egg hunt was so much fun last month. The children loved finding the eggs. Thank you to everyone who came.



This month we will be having a bring and buy cake sale on the 10th May. If you would like to make a cake, please do (or you can just enjoy eating them). All proceeds will go towards the running of the Bunnies.

We are currently looking for helpers for the bunnies. If any parents would like to join our volunteers you would be most welcome.

Where: The Village Club, George St

When: every Tuesday, 9am-11am

Cost: £1 for bumps and unweaned babies. £2.50 for adult and first child (including snack kindly donated by Swan Street Stores) and 50p for additional children.

**Helen Thurlwell**

## Good Festival



Hampshire's family festival is back for 2022 with an incredible fund-raising target for local NHS hospitals. Good Festival (formerly Hampshire Country & Garden Festival) is returning to its incredible location in the beautiful gardens of

**Bere Mill on the River Test in Whitchurch**  
**on the 25th and 26th June 2022.**

The festival is an annual event organised by The Hampshire Medical Fund, the charity that purchases pioneering medical equipment for Basingstoke, Andover and Winchester NHS hospitals that is not covered by NHS budgets. Last year the festival raised an incredible £72,000 enabling the purchase and installation of eight Resuscitaire machines across the maternity and neo-natal departments in each hospital.

The charity is aiming sky-high this year, to raise £200,000 for a state-of-the-art machine for interventional radiology, enabling tumour ablations in patients with lung, liver and kidney cancers. With only two of these machines in the entire UK, this machine would be cutting edge technology in cancer treatment.

This year, the festival begins with a Saturday evening supper and auction and continues into Sunday with an all-day family festival. This family friendly event celebrates good living – with delicious food, exciting attractions, stalls, displays, talks and a delightful dog show. Visitors will have a wonderful time and critically, help to support this incredible cause that will have an impact on cancer treatment in our local NHS hospitals.

Tickets to the festival can be bought at: [www.goodfestival.co.uk/buy-tickets](http://www.goodfestival.co.uk/buy-tickets)

To donate to this wonderful cause now, please text **HMFGF10 (£10) OR**

## Come one, come all!



**The Kingsclere Players** would like to invite community members interested in joining the Kingsclere Players to a social event (ahem, a quick AGM followed by drinks, nibbles and socialising) to learn more about the most 'entertaining' group in the village! We're a social group that enjoys putting on community entertainment, but first we're a group of people who have a lot of fun together.

Join us on Wednesday **11th May, 8pm at the Fieldgate Centre**



## Kingsclere CE Primary School

As we move into May we have been thrilled to welcome more parent/ carers and volunteers back into school to help support us with events, both within school and off-site. This month we are very much looking forward to the long anticipated Young Voices concert where a group of 45

children will be heading to the London O2 Arena to sing in a concert! This event has been postponed several times over the last few years. It is wonderful that the children will finally be able to sing their hearts out to a huge crowd of over 5000 people!

We have had a huge drive on outdoor learning this term. Staff have received updates in their training and it has been wonderful to see the children accessing learning experiences outside within our school grounds. Traditionally we have a day dedicated to outdoor learning; "Grounds Day", but this term we have encouraged outdoor learning to be embraced more naturally through weekly activities planned within the usual curriculum. The children have highlighted that they have enjoyed the space and fresh air as well as the exciting activities!



With restrictions continuing to ease across the county, we have had the privilege of joining many other schools at local sports tournament events. The children have entered a football tournament and a cross-country event this term. They all demonstrated our school values of "Love, Courage and Respect"

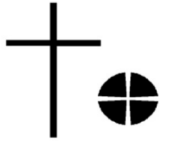
throughout each event, growing in confidence and skill throughout whilst representing the school with pride – well done!

Looking forward to the sunny summer months ahead. Please contact the school should you wish for a tour, all are welcome.

**Mrs Hannah Melrose**  
Headteacher

## Dear Friends

Our Easter Day celebrations are over and with Christians around the world, we now move to the anticipation of Pentecost, the reminder that we have a collective opportunity to offer, share and live out the signs of the Kingdom about which St John wrote in his gospel, "so that you (and others) may believe that Jesus is the Christ, the Son of God, and that by believing you may have life in his name."



So, what are the hallmarks of the life we are offered through faith? It is not a life of easy options, of spiritual platitudes or of quick fixes. The resurrected Christ still bears the scars of the crucifixion – resurrection does not undo the events of Good Friday. It is the suffering Christ who is present in the world. It is the crucified Jesus who is resurrected.

One of the main hallmarks is that it is not an unaccompanied life, it is connected to the Spirit. The disciples are sent to continue Jesus' mission of revealing God to the world. They will not be left on their own in this daunting task. Jesus had promised to send another Advocate (paraklétos, one who is "called alongside" someone) who would be with them forever. In John's gospel we read that Jesus fulfils that promise for them ahead of Pentecost. In an act of new creation he breathes into his disciples the gift of the Holy Spirit.

It seems to me that our world is once again becoming quite individualistic and that there is beginning to be a decline in the spirit of togetherness that was so tangible in the most difficult days of the various lockdowns. We felt that we were all working together for the "common good". It is disappointing at the very least to learn that the behaviour of some of our elected representatives during that same period (and since) has been for anything but the common good.

Our part in God's mission here in 2022 is a very high calling. Yes, we pray that we may be deepened in faith and that we may encourage others to stretch out hands, minds and hearts to the God who reaches out to them, that they, with Thomas may express in their own way and in God's time, "My Lord and my God". But we are also called to speak the truth of the gospel and to be the announcers of Jesus' way of living which at humanity uses to justify the divisions we see around us on a daily basis.

Peace,

*Rachel*

**Rev Rachel Borgars**  
Methodist Minister

## Services in our churches during May will be as follows:



Sunday 1 <sup>st</sup> May	9.30am Holy Communion St Peter's, Headley	10.30am Holy Communion with Junior Church St Mary's, Kingsclere
Thursday 5 <sup>th</sup> May		10.30am Morning Worship, St Mary's, Kingsclere
Sunday 8 <sup>th</sup> May	9.30am Morning Worship St Peter's, Headley	10.30am Morning Worship with Junior Church St Mary's, Kingsclere
Thursday 12 <sup>th</sup> May		10.30am Morning Worship, St Mary's, Kingsclere
Sunday 15 <sup>th</sup> May	9.30am Morning Worship St Paul's, Ashford Hill	10.30am All-Age Worship St Mary's, Kingsclere
Thursday 19 <sup>th</sup> May		10.30am Morning Worship, St Mary's, Kingsclere
Sunday 22 <sup>nd</sup> May	9.30am Holy Communion St Paul's, Ashford Hill	10.30am Morning Worship with Junior Church St Mary's, Kingsclere
Sunday 29 <sup>th</sup> May		10.30am Morning Worship St Mary's, Kingsclere

[www.stmaryskingsclere.co.uk](http://www.stmaryskingsclere.co.uk)

## Lighting up St Mary's

The sight of St Mary's Church when it is floodlit is truly beautiful. Many people sponsor these lights (£12 per evening) to celebrate an occasion such as a birthday, wedding, anniversary, christening, or some other special day in their lives.



To book, contact Emma, our Church Administrator on 07422 687125 or email [administrator@stmaryskingsclere.co.uk](mailto:administrator@stmaryskingsclere.co.uk)

### February

- 17th Apologies for the omission in the April Tower. The lights were lit on 17th February to celebrate the 102nd Birthday of George Vickery. With love and best wishes from all his family.

### April

- 13th For Richard Hale on his birthday. We miss you so much, love you always Mum and Dad x x  
16th In the 100th anniversary year of John Porter's death, to mark the running of the "John Porter Stakes" at Newbury today.

### May

- 4th Loving memories of Moira on her birthday.  
25th Mum and Win, Happy 20th Wedding Anniversary. Love from Stuart, Christina, Isabelle and Henry.  
31st Remembering Hazel Soper. A dear Mum, Grandma and Great Grandma on her birthday.

## Methodist Church May Services



Sunday	1st May	Local Arrangement
Sunday	8th May	Rev'd Rachel Borgars
Sunday	15th May	Rev'd Canon Jill Bentall
Sunday	22nd May	Maggy Wallace
Sunday	29th May	Service at Overton Methodist Church

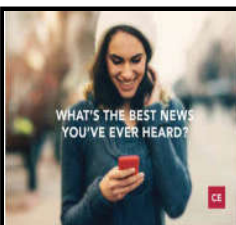
All services begin at 10 am and all are welcome!

**We also have a coffee morning 10.30am to 12noon every Thursday** in our church hall. Our hall is also available for hire.

For contact details please see back cover of this magazine.

**Christine Westcombe**  
[c\\_westcombe@hotmail.com](mailto:c_westcombe@hotmail.com)





Christianity Explored is an informal and relaxed course. It's for anyone who wants to think about the meaning of life. It's run by local Christians and is free. You don't need to know anything about the Bible, and you won't be asked to sing or pray. You can ask any question you like or you can just sit and listen.

We will run this course in Kingsclere at 7.30pm in the Kingsmill Room on the following dates:

**Tues 26th April, Mon 2nd May, Mon 9th May  
Mon 16th May, Mon 23rd May, Mon 30th May**

We'll begin with a light meal, then watch a video and have some time for discussion.

For more information, or if you'd like to join in, please contact the church office 01635 299528 or [administrator@stmaryskingsclere.co.uk](mailto:administrator@stmaryskingsclere.co.uk)

### u3a Overton and District

DO come to our May meeting:

**'The Mother of the Brontes'- when Marie met Patrick.  
Speaker: Sharon Wright  
Wednesday 18th May- 10.00am  
St Mary's Hall, Overton**

Free to members – non-members £3 on the door.

Sharon Wright is an author, journalist and playwright. She has worked as a writer, editor and columnist for leading national magazines, newspapers and websites including The Guardian and Daily Express.

### Paula Margaret Tait (1955-2022)

Philip, Steph, Stuart, Lyndsey and their families would like to thank everyone for their kindness and condolences for the sudden loss of their wife, mother, nanny, sister, aunt and friend. Paula Tait (nee Wellman) passed away at St. Michaels Hospice on 15th March 2022 after a short illness. She will be sadly missed by everyone she met. She gave her love and time generously. Special thanks are due to everyone at St. Michael's Hospice who made her last days so peaceful. Howe and Son funeral directors and the team at St. Mary's church who helped arrange a wonderful funeral and Sandford Springs who provided a fitting end to a memorable day. RIP Paula.

**Phil Tait**

## Community Larder

### Open Thursdays 2.30 - 4.30pm

Are you in the need of food? If so, please come along to St Mary's Church and choose a bag of dried/tinned items and household goods for £3 and as much fresh/frozen food as you need for free.

Enjoy refreshments and a chat too.

To combat food waste anyone is welcome to come and take any remaining fresh food between 4.15 and 4.30pm.

Donations always welcome (11.30 - 12.30 each Thursday)  
Tel 07422 687125



### Friends of St Mary's Kingsclere Ltd

Welcoming the return of normal activities, we are now planning our programme for the rest of this year. As well as the Plant Sale with Kingsclere Gardening Association on Saturday 21st May and the long-awaited Biennial Art Exhibition for which we have yet to settle on a date, we hope in Autumn to stage two events which break entirely new ground for FOSM.

The first will be a private visit to a local Flower Garden, which will include a short talk by the grower, tea and cakes, a visit to the flower field, and choosing a handful of seasonal blooms to take home.

The second will be a six-hour Swedish 'Staycation' at the Village Club, featuring an ABBA Tribute Act. Both promise to be popular, and those who have experienced other 'staycation' events will attest that they are great fun. Details in future issues of The Tower as our plans develop.



St. Mary's Church in Kingsclere

**Peter Turner, Chairman**



## Bring on Tomorrow!

Charity Gala  
6th April 2022 Anvil Theatre  
Basingstoke



The Kingsclere Performing Arts College, JLD School of Dance, Kingsclere Primary School, Theatre Train Basingstoke, the QMC Dance Company and Berkshire SOTA put on a bravura performance of song and dance in aid of the campaign to save 24 Swan Street as a centre for the Performing Arts, young people and the local community.

Adam Stafford, actor and stage director, was an amusing and informative compere introducing the different groups and talking through the importance of maintaining 24 Swan Street as an asset and the contribution that the Kingsclere Performing Arts College has made to so many students. Former students Matt Roberts and Madelaine Gravatt and current student Charlie Pope sang superbly as well as adding their voices in support of how much they valued their experience at the College.

Most praise must, however, go to all the young students, over 200 of them who made the evening so special. Starting with the singing of the Kingsclere School choir it was an inspiring evening of youthful talent. The Performing Arts students and the QMC Dance Company provided the most ambitious work but it would be invidious to concentrate too much on any particular group as all the performances were excellent.

Above all though, it was a real pleasure to see students of all ages coming together showing such ability and concentration and above all really enjoying themselves.

Special congratulations to the two co - producers Hannah Horton and Juliette Caton.

Much has been made of children suffering from mental health problems during lockdown. This was a heartening response showing how much our children have to offer.

**More information about the Save 24 Swan Street at #Save24SwanStreet.**

**Donate at <https://gofundme.com/save-24-swan-street>**

## The Watership Down Team



Five new staff have joined the team. Three new admin staff: Kelly, Amy and Maria and new receptionists in Overton, Mya and in Kingsclere, Helen.

We also wish to thank Mrs Pam Myers who has been our Medical Secretary for the last 39 years and we wish Pam a long and happy retirement.

Please be aware that healthcare staff are also affected by Covid and we are required by the government to remain at home for up to 10 days with a Covid infection.

**Wearing Face Masks** Please continue to wear a face mask when attending any of our surgeries unless you have a valid exemption in place. We are continuing to protect our most vulnerable and unwell patients and ask that you respect that the anxiety levels of the most vulnerable are still high.

**Contacting the surgery:** Before contacting or visiting the surgery please read the information available on our website. ([www.watershipdownhealth.com](http://www.watershipdownhealth.com))

**On-line access:** We now have around 10,000 patients who have on-line access. If you would like to set up an on-line account (or a proxy account for someone you care or are responsible for) you can request this via our Web Site or in person. This will give you access to test results, ordering repeat prescriptions and appointment bookings when they become available.

**Covid-19 Vaccination update:** Our patients are still able to access 1st, 2nd, booster and 4th Covid vaccinations at Jameson House and the Health Hub in Festival Place. Spring boosters are only being offered to patients who will be 75 or over. Patients in that cohort will be invited to receive their spring booster by text, email or phone.

More information on the Covid-19 vaccination programme can be found here: <https://hampshiresouthamptonandisleofwightccg.nhs.uk/your-health/latest-information-on-covid-19/covid-19-vaccination-programme>

## Nature Notes

The relaxation and pleasure of a hot shower on a cool, spring morning was rudely shattered by the arrival of a queen wasp, not the 'just made it through the Winter feeble type' but a Boudicca of her kind, pinging around the shower and trying to drill a hole in the glass. Ever polite and feeling rather vulnerable, the half-window was opened and feeble attempts made to guide Queenie through but with no success. Exit human! She eventually found her way out, firing on all cylinders, to form a new colony. Often the condition of emerging queens is quite different, they can barely crawl which is where sugar water can work its wonders in restoring their energies. The bathroom is an obvious choice in which to hibernate, but it is also a busy place, yet no hibernators have ever been found in the dormant period.



In mid-March pale, buff coloured dust could be found on our cars, wheelie bins and other outdoor hard materials. This was delivered via high winds from the Sahara. One can imagine how northbound migratory species of birds and butterflies might take advantage of such winds on the long journeys to their breeding grounds.

Fallow deer are dusky grey in winter and can often be seen in a sheltered field near Ashford Hill. What was surprising recently was to see a single deer in full summer coat of pale tan with dappled spots - an optimistic individual.

Rooks were traditionally birds of woodland and farmland. Optimistic and intelligent they are now comfortable among the trees and rooftops of built-up areas where food is plentiful via bird tables and gardens. They also forage busily, along with jackdaws, on the mown grass bordering roads.

**Diana Tait and Rod Eldred**

## The Children's Society

Thank you to all box holders who returned their box filled to the brim with coins. Your contribution towards the funding of the charity is vital and much appreciated.



If you missed my previous plea for contact, please do get in touch now to arrange the return of your box or to update your details.

There will soon be a vacancy for the voluntary role of local box collector. The annual task is not onerous. It involves collecting the boxes, paying the money raised into a bank and submitting a record of donations to the charity. Please telephone me if you are interested.

**Sue Grove-White** 01635 297683 [www.childrenssociety.org.uk](http://www.childrenssociety.org.uk)  
Every young person deserves a good childhood.'

## Kingsclere Gardening Association

Our next event is the

**Kingsclere Gardening Association and FOSM Plant Sale**



**21 May 2022 – St Mary's Churchyard 10am-12noon.**

This very popular village event is back this year. Please come along and see what the growers of Kingsclere and surrounding area have been able to produce from their own gardens. On hand will be people who can give you help and advice on any potential purchases. If you have any plants or spare seedlings, please bring them along on the morning or get in touch with me and I will happily accept these donations and take them for you. If anyone would like to help on the day, again, please let me know.

**We are organising an evening visit to a garden in Overton**

**Thursday 16 June at 7pm. Riverside Close.**

Cynthia and Tony Morris will be our hosts. Tickets (including refreshments) are £5 per person. If you would like to go, please contact Sylvia Pennington on 01635 298880 or [sylviapennington@btinternet.com](mailto:sylviapennington@btinternet.com) who is the event organizer.

Another date for your diary is our Annual Show being held at the Fieldgate Centre on Sunday 21 August. Doors open at 2.30pm for visitors. We would love to encourage people from the village to 'have a go' at exhibiting. This show is very diverse with classes in flowers, vegetable, fruit, cooking, craft, and children only categories.

**Beth Theobald (Secretary) 07916 032250.**

Facebook: Kingsclere Gardening Association. Please join our group. News, events and schedules for show entries will be advertised there first.

**200 200 200 200 200 200 FOSM 200 Club 200 200 200 200 200**

The April Draw winner was Norma Absolom – No. 33.

**Congratulations, Norma.**

The May Draw will take place at The Crown at approximately 7 pm on Tuesday 3rd May.

**Jane Royle** 01635 297430 [jane.b.royle@gmail.com](mailto:jane.b.royle@gmail.com)



## May in the Garden



This is probably one of the best months in the garden. The trees have their fresh new leaves. Many of the late spring bulbs will be putting on a marvelous show. Tulips will be at their best as will foxgloves and camassia. Syringa (lilac) will be good now. As they enjoy our local alkaline-neutral soil they are so worth planting if you have the space. Early flowering clematis should be looking good this month.

Do be aware of frost for although the days are longer and warmer, I can guarantee that as the hostas begin to grow nicely, we will always get some night frosts and often hail during the day. This will also affect fruit trees and many other tender plants. It is always useful to have some horticultural fleece or if appropriate, newspaper available to cover plants that need protection.

There will be some shrubs to prune that have finished flowering. If a shrub has got too large, now is a good time to cut at least half of it away and if you feel brave enough cut to the base. The shrub will recover with lots of new shoots. I train a few shrubs as standards as this allows you to enjoy the blossom. They are easier to keep tidy and give space underneath to display other plants even if it's just ground cover like aubrieta.

With so much growth in the garden, climbers need to be tied in. This includes clematis, roses, vines and also tall growing perennials will need support.

The lawns should be at their best and will need to be cut more often. Feeding will be necessary to keep them looking good.

There are still some vegetables that can be sown this month such as chard, runner beans, French beans and spinach. Plant out leeks, sweetcorn, marrows, courgettes, Brussel sprouts and any other winter brassicas. As brassicas are in the soil for several months, it is possible to plant between the rows with short term crops, such as lettuce and radishes. Pinch out broad bean tips. This discourages black fly which enjoy the succulent tips. The strawberry patch will need attention. Remove runners and protect the fruit with straw to keep the fruit from wet soil and slugs.

Sow biennials now. Sowing seeds that will not flower till next year takes patience but is well worth the wait when you consider how lovely it is to see foxgloves, sweet Williams and Canterbury bells.

Hoe regularly to keep weeds in check. It is always easier than leaving it till later when the weeds become established. Keep plants watered as weak plants attract many unwanted predators, especially the vine weevil.

Continue to deadhead spring bulbs that have finished flowering and feed them to build up the bulbs for next year.

Denise Allen

**Big News!** We have signed up with the international Repair Cafe and are getting organised to be able to repair your items and keep them out of the bins!



If you have skills to mend anything from electrical items to small furniture pieces, toys, clothes etc. and would like to work with a cooperative team, please get in touch with us!!

Also, if you would like to be on our mailing list to hear about our exciting new ventures or would like to volunteer to help, please email to sign up. We promise not to bombard you.

Our next market is  
**Sunday 26th June, 10.00am – 12.30pm,**  
**The Fieldgate Centre.**

We will be accepting for recycling:

Batteries (not car), medicine blister packs, plastic milk tops,  
Inkjet cartridges (originals only not compatible or laser),  
Bras (last time collecting), eyeglasses (last time collecting).

\*Market in partnership with the Kingsclere Community Centre.

Nicki, Sarah & Lucinda [greenerkingsclere@gmail.com](mailto:greenerkingsclere@gmail.com)  
[www.Greener-kingsclere.co.uk](http://www.Greener-kingsclere.co.uk)

## Kingsclere Singers

A big thank you to everyone who attended our spring events. We had a wonderful turnout at the Fieldgate on Saturday 9th April.

In 2022, after nearly 100 years (!!!) of rehearsing at the Methodist Hall, the Kingsclere Singers have established a new home at the Fieldgate Centre. We would like to thank the Methodist for all the wonderful memories.

We will now be putting on two events each year in conjunction with the Kingsclere Community Association and are excited that the Fieldgate offers more space for us to welcome new members. We rehearse on Monday evenings at the Fieldgate Centre from 7.30pm-9.15pm.

We've just started our summer term and would love you to join us. Our summer event will be 'A Tribute to Broadway'.

There are no auditions and don't worry if you can't read music - if you enjoy singing, come and enjoy yourself on a Monday evening. We'd love to see you there!

## Basingstoke and District Disability Forum

### Chineham & Sherfield Park Scarecrow Trail 28th-29th May 2022

#### A Moment in History

Come and join Basingstoke and District Disability Forum (BDDF) on **28th-29th May** for this fantastic annual community event. 'The Rolls Royce of Scarecrow Trails' returns, which follow this year's theme 'A Moment in History' to coincide with the Queen's Jubilee celebrations. Last year, we surpassed all expectations and the 500 families that attended enjoyed the 68 amazing entries over 2 trails which covered a total of 8 miles. This year all scarecrows will remain on display over the extended Bank Holiday weekend.



## Kingsclere Tennis Club

If you would like to play tennis locally, Adult, Junior and Family memberships are available at very reasonable rates.



### ALL WELCOME!

There is a simple booking system in place to make organising play easier for all members.

The summer season starts on **1st May 2022**. To join or to renew your membership contact Adam Price on 07725 901362 or email: [adamprice27st@gmail.com](mailto:adamprice27st@gmail.com)

Saturday morning coaching sessions – open to members and non-members

Coaching for 5 to 9 year olds (9am to 10am) and adult cardio tennis (11am – 12noon)

Contact [mollynaylor7@gmail.com](mailto:mollynaylor7@gmail.com) or phone 07595905289 for details and prices.

Adults interested in playing organised social tennis sessions contact:

Thursday mornings - Daphne Snook on 07768 664347  
Sunday mornings – Nigel Baker on 07785 763967

### NIGHT NANNY WANTED.

Exhausted parents of a beautiful one month old baby require help at night in Echinswell. Please contact 07968368458. Thank you.

## Try Lawn Bowling

Need more exercise? Want a new pastime? Like to make new friends and socialise? You can do all these by coming to **KINGSCLERE BOWLING CLUB** and try bowling. Our season starts in April and continues until mid- September.



Following the green opening we shall be holding **OPEN EVENINGS** on **Tuesdays during May** starting at 6.30pm for you to give bowling a try – **ABSOLUTELY FREE!**

All ages, genders and novices will be very welcome to attend on any or all of these evenings. Tuition will be given and bowls provided. All we ask is that you wear flat soled shoes or trainers and are reasonably mobile.

For further information contact Brian Watts on 0118 981 6892 or email [brian-watts@btconnect.com](mailto:brian-watts@btconnect.com) or visit [www.kingsclerebowlingclub.co.uk](http://www.kingsclerebowlingclub.co.uk).

KINGSCLERE BOWLING CLUB, William Holding Field, Ashford Hill Road, Kingsclere, RG20 5NY

## The Ship Inn Music and Arts Centre

The Ship Inn Country Hotel, Ashford Hill, RG19 8BD

We held our first Spring concert on 19th March and it was such a special evening with some wonderful performances. Our audience also managed to raise £200 for the Ukraine which we hope will be doubled and with gift aid on top. We are non profit making.

All future concerts/events are on our website.  
<https://shipinnarts.org/>

Our next concert is on **Saturday 14th May 2022**  
**7pm "An evening with Sfsax"** plus a sprinkling of soloists. Tickets are £12 on Eventbrite



<https://www.eventbrite.co.uk/e/an-evening-with-sf-sax-at-the-ship-inn-arts-centre-tickets-309075562327>

This venue also has recently become the Newbury centre for the London College of Music Examinations and will have exams there in the Summer session in July 2022. Do get in to touch if you are thinking of taking an exam with the London College of Music. You will find the telephone number under the Newbury centre: <https://lcme.uwl.ac.uk/information/exam-centres-uk-ireland>

01189 814504 [Shipinnarts@gmail.com](mailto:Shipinnarts@gmail.com)

