

The Kingsclere Tower



June 2022

Your Village Magazine

The Kingsclere Tower

EDITORS: Nicki Lee, Mike Stokoe and Stephen Steare
ADVERTISING: Brian Elborn b.elborn345@btinternet.com ☎298704
DISTRIBUTION: Brian Elborn ☎298704
ASSEMBLY: Andrew Kitch ☎299743
PRINTERS: Kingsclere Design & Print Ltd
LAYOUT/COVER: Mike Stokoe

At last! Something to celebrate! The depressing news has continued to accumulate but the Queen's Platinum Jubilee gives us a moment of unalloyed pleasure as we give thanks for her long reign and service.

Read the Tower pages carefully because there will be much to enjoy over the Jubilee Bank Holiday. From the lighting of the beacons across the country with our very own above Kingsclere on the evening of the 2nd June, the Duck race on the 3rd, the Grand Parade, parties and cream teas on the 4th and the Church service and lunch on the 5th.

A fascinating glimpse of Queen Victoria's Diamond Jubilee in 1887 is shown in the photograph of George Street taken on that occasion which you can see on page 3 of this edition.

We would also like to thank Councillor John Sawyer who is standing down this month as Parish Chairman for all his good work. Brian May may not be playing on the roof of the Village Club for you, John, but you have the thanks of Kingsclere villagers.

The Editor

Neither the Editor, nor the Management Committee accept responsibility for the opinions expressed or the goods and services advertised in the Kingsclere Tower.

To all "Tower" Contributors

Copy for **July** to the Editor at kingscleretower@gmail.com.
If email not possible post to 23 Swan Street, Kingsclere, Newbury RG20 5PP.

NOT LATER THAN 12th June.

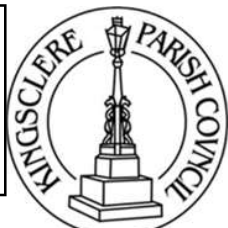
**Will ALL contributors please include full name
& home phone number/e-mail address.**

KINGSLERE PARISH COUNCIL

Email: clerk@kingsclere-pc.org.uk

Telephone: 01635 298634

Office: 37 George Street, Kingsclere RG20 5NH



THANK YOU JOHN SAWYER

Cllr. John Sawyer stood down from the role of Chairman of the Parish Council at the Annual Meeting of the Council on 30th May. John has been an exemplary Chairman since 2015. During his time in office he has presided over an ever-increasing workload and has led the Council through the Neighbourhood Plan consultations, the commemorations of the centenary of WW1, being runner-up in the Hampshire Small Village of the Year and winning Excellence in Localism at the Village of the Year Awards in 2018. He has been instrumental in obtaining traffic calming measures and kept the Council running through the Covid pandemic, to name just a few achievements.

On behalf of the residents, Councillors past and present, and the Parish Council staff, thank you John for your hard work and dedication to the Parish of Kingsclere over the past seven years. Your fellow councillors and Parish Council staff are delighted you are not leaving the Council completely and look forward to continuing to work with you.

QUEEN'S JUBILEE WEEKEND CELEBRATIONS – There is an amazing weekend of events planned for the Queen's Jubilee. From cream teas and street parades to the Village Party on Saturday 4th June. A full list of events can be found on KPC's website:

<http://www.kingsclere-pc.org.uk/community/kingsclere-parish-council-5041/jubilee/> To join the Grand Parade, please use the online form to register, found on the website link above.

ROAD CLOSURE FOR JUBILEE GRAND PARADE - The roads leading through the village from the William Holding Field, down George Street, into Popes Hill, up to Field Gate Drive will be closed for the Grand Jubilee Parade on the 4th June for about 40 minutes between 2 -3pm.

WILLIAM HOLDING FIELD – A polite reminder that no horses or other animals (except assistance dogs) are permitted on the field without the prior written permission of Kingsclere Parish Council and all events held on the land also need prior permission from the Parish Council.

The Parish website
@kingsclerepc



facebook.com/KingsclereParishCouncil

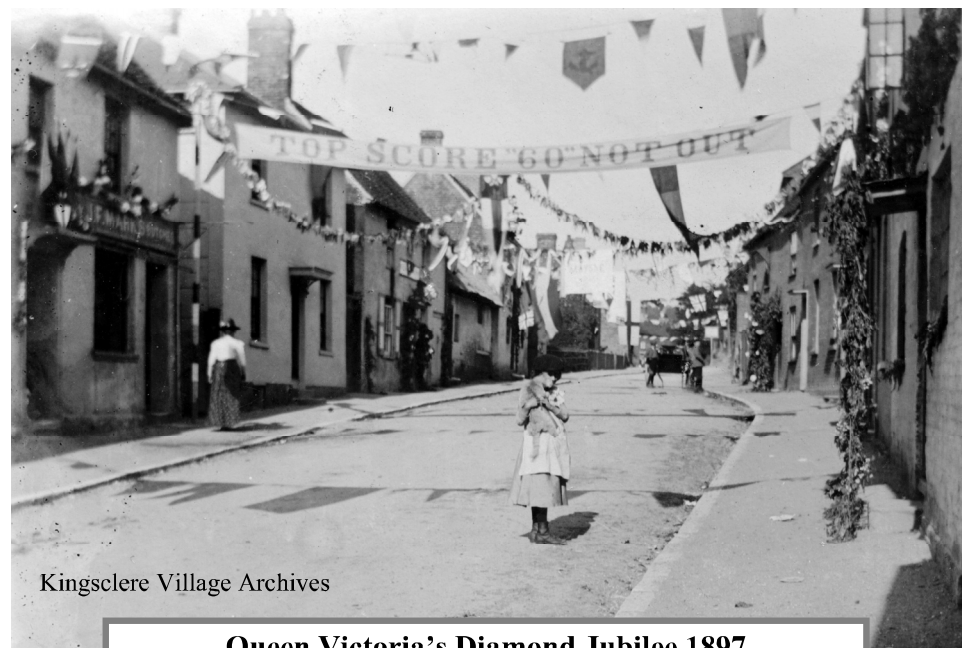
www.kingsclere-pc.org.uk

LOCAL BOROUGH ELECTION RESULTS – After the Borough Elections on 5th May, Cllr Kerry Morrow was elected as the new Borough Councillor for Tadley North, Kingsclere and Baughurst Ward. Thanks go to Cllr Geoff Poland for his contribution to the Village during his time as our Borough Councillor.

ANNUAL PARISH MEETING – Thanks to all those who attended the Annual Parish Meeting on 23rd May. Special thanks to Chris Boulton, CEO of the Greenham Trust, who was guest speaker.

GREEN WHEELY BINS & GLASS RECYCLING – the collections dates are Wednesday 15th June, Wednesday 29th June and Wednesday 13th July 2022.

NEXT PARISH COUNCIL MEETING – will be at 7:30pm on Monday 27th June 2022 in the Village Club, (unless otherwise notified). We welcome the attendance of all parishioners at our meetings and anyone who wishes to raise any matters of concern will be given the opportunity to do so.



Kingsclere Village Archives

Queen Victoria's Diamond Jubilee 1897

A fascinating photograph of a previous Jubilee celebration in George Street. "Top Score 60 Not Out" shows the robust pleasure the Kingsclere villagers took on the occasion of this anniversary. Mr Marks, the 27 year old butcher, had the shop on the left of the photo. Arthur Cook opened his cycle shop in the white house next to him. He later ran a garage further up the street where The Litten has been subsequently built.



Kingsclere Celebrates The Queen's Platinum Jubilee

Thursday 2nd June Queen's Platinum Jubilee Beacon

Lighting up at 9.45pm

Good views from Sydmonton Rd and footpath from top of Bear Hill

BBQ, Milkshakes, Back to the 1950s

Thur-Sun, The George and Horn

Friday 3rd June

Duck Race

Stream at foot of Pope's Hill

Children's Street Party

Tickets from The Crown

Saturday 4th June

Grand Parade Through the Village

Open to all, 2pm. 1950s and Royal themed with prizes for the best costumes

Register at www.kingsclere-pc.org.uk

Platinum Jubilee Party

Fieldgate Centre after the Grand Parade

Prize giving, cake raffle, family fun, live music

Cream Teas and Exhibition of 1950s Life

Watch the Grand Parade from the Village Club

Sunday 5th June

Church Service & Big Jubilee Lunch

From 10.30am at St Mary's Church

BBQ & Live Music

4pm Bel & The Dragon

@ The Swan



24th May — 4th June
Children's Scavenger Hunt
The Library



The Fieldgate Centre is run by the Kingsclere Community Association as a charity (No. 1168366). The association is made up of volunteers who rely on the support and participation of the community.

Get ready for the Grand Parade on Saturday 4th June

Let's show everyone that Kingsclere can really put on a parade! Wear anything royal or 1950s themed. Pets in patriotic costume welcomed. Bring family and friends, wave your flags, and follow the parade all the way to the...

Platinum Jubilee Party at The Fieldgate Centre from 3pm 'til late

Prizes for Best Costumes

Bands: 'The Only Band in The Village' & 'Phantom Booth'
Kingsclere Singers

Royal Photo Booth

Jubilee Celebration Cake + Champagne Raffle

Rodeo & Bouncy Castle

Lucky dip prizes (for the first 50 children to cross the finish line).

Meet racehorse 'Side Glance' with Jemima in The Queen's Colours
1952 Riley Car

Ice Cream - Tea, Coffee, Cake - BBQ - Bar Open

Ceroc 'Summer Jubilee Dance Party'

Thursday 2nd 2pm - 7pm

Beginner Move Marathon Class at 2.30pm.

Freestyle dancing until 7pm

Entry fee £9 includes delicious goodies!

Monthly Meet-Up

Tuesday 21st 2.30-4.30pm

website: www.thefieldgatecentre.co.uk tel: 01635 298497
email: fieldgatecentre@outlook.com facebook



KINGSCLERE VILLAGE CLUB

Est. 1921

100 years and counting ...

Website <http://www.kingsclerevillageclub.co.uk>

Facebook <https://www.facebook.com/kingsclerevillageclub>

Community Café

This month's café is on **June 25th** 10am-1pm including a **quiz** at 11am. Homemade cake, tea, coffee and a warm welcome for all.

Mobility issues? Please contact 07813 368259 and we will try to arrange transport.

Summer Market

The next **Artisan Food and Craft Market** will be on Sunday 17th July, 10am-1pm. A wide variety of local artisans will be back again to surprise and delight you. Well worth a visit!

Jubilee

We are holding an exhibition of **Life in the 50s** on Saturday 4th June, 10am-4pm. Thanks to those who have contributed. There may be some spaces left at our **free cream tea** on Saturday 4th June. Older members of the community and guests are invited to come and watch the start of the Jubilee Parade from outside the Club. Chairs provided. Contact Helen for more details.

Don't Miss Out!

Tickets for **Shakespeare in the Garden** are already selling well so contact Helen to book before we sell out. Midsummer Night's Dream, Saturday 27th August, £15 performance (7.30pm), £22.50 Performance + picnic (6.30pm). Helen 01635 297390 or events@kingsclerevillageclub.co.uk



St. Stephen's Church Baughurst

St. Stephen's are holding a flower festival in the Church over the Platinum Jubilee weekend

3rd – 5th June from 10am to 6pm

The theme is :

“Together we save the Planet and the British Countryside”

Donations for Cancer Research and the regeneration of the local Great Haughurst Copse.

Refreshments will also be served

Sunday 5th June at 6.30pm

At the end of the flower festival in the Church there will be a Civic Service to celebrate the Platinum Jubilee of the Queen's Accession.



At 7.30pm (doors open 7.00pm)
at the Village Club, George Street.

SUNDAY, 12 June

Official Secrets

(2019 - 15 - 112 minutes)

The true story of a British whistleblower who leaked information to the press about an illegal NSA spy operation designed to push the UN Security Council into sanctioning the 2003 invasion of Iraq.

Next Month: 9 July 2022

1917
(2019)

Kingsclere Film Club welcomes guests at £7.50, subject to space. New members welcome at any time.

For further information call John Sawyer (Chairman) 297221 or Diana Tait (Membership Secretary) 298494

Kingsclere Community Library

The Queen's Jubilee - FREE Scavenger Hunt Game for children to celebrate the Jubilee! This will go on until 4th June. Sign up at the library.

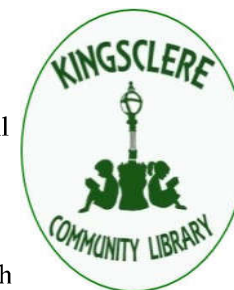
Author Talk 14th June, 7:30pm in the library

Kingsclere resident Angus Cater will be discussing his book '*Harrac Goes South*' about circumnavigating South America in a 45-foot wooden boat.

Tickets £5 are available from the library or from Event Brite. Advanced booking is recommended as space is limited.

HOURS Tuesday & Thursday 1.00pm-5.30pm
Saturday 10.00am-1.00pm

Nicki Lee Library phone 01635 297464
Kingsclerelibrary@gmail.com www.kingsclerelibrary.co.uk





The Watership Down Team

We wish to inform patients registered with Dr David Bartlett that he intends to retire from General Practice after 25 years on 1st August 2022.

Dr Bartlett has asked us to share the following sentiments “I consider myself very fortunate to have served the residents of Oakley and then latterly Overton and Kingsclere and surrounding areas for almost a quarter of a century. You have played your own part in our provision of care by being thoughtful, considerate and appreciative. The pandemic has given you the chance to show your gratitude still more and you can be assured that we are all moved by your expressions of support. Just when the going gets tough, one of you always comes through with a kind word or a treat to lift the spirits and I cannot put into words how these simple acts motivate us all to keep on keeping on. I will be sorry to leave but the premature deaths of two friends have convinced me to enjoy my good health in retirement while I can. I am reassured by the fact that I leave you in the very capable hands of my colleagues with whom it has been my honour to have laboured in difficult times to keep the ship afloat”.

After eleven years, Dr Jonathan Rial will also sadly be leaving us in July of this year. He is looking forward to spending more time with his family and focus on his education roles.

Both patient lists will be distributed to other GPs within the Partnership.

Lyme Disease

As the weather is improving and there is greater opportunity to spend time outdoors, there is the likelihood that patients may get ticks. Tick bites are not always painful. You may not notice a tick unless you see it on your skin. Regularly check for ticks on your clothes and skin and on children and pets after being outdoors. Seek help early if you believe you may have been bitten.

The NHS website has a good section on this at <https://www.nhs.uk/conditions/lyme-disease/>

KINGSCLERE AND HEADLEY WOODLANDS W.I.



Last month we voted for our new committee and president and also on the resolution to be debated at the Annual General meeting in Liverpool in June. We also donated our competition money of £50 collected over the past few years (with a break we all know about) to the Kingsclere food bank.

This month our meeting is on the 8th June. We have the first of our speakers for the new WI year, Clare Roberts, telling us about the Vyne Estate. As this is a local estate I'm sure that many members will have visited and therefore, will be interested to hear how things have changed since their visit. Our meeting starts at 1.45pm and we would be delighted to welcome visitors who wish to hear our speaker and generally find out about their local WI. They can be sure of a very warm welcome.

Margaret Geary
President
297197

Bunnies

Thank you to all the bunnies and parents who came to the cake sale and to those who made cakes. The cakes were delicious! The money raised will be used for the Bunnies' summer party. The summer party date for the diary is 19th July, further details to follow.



This month we will be having a toy sale fundraiser on the 21st June. If you have any unwanted toys to donate or are looking to buy any second hand, then please do come along.

Where: The Village Club, George St
When: every Tuesday, 9am-11am
Cost: £1 for bumps and unweaned babies.
£2.50 for adult and first child (including snack kindly donated by Swan Street Stores) and 50p for additional children

Nature Notes

As these notes are being written, on the 9th, the bulk of leaves have opened and have joined the canopy of tree cover, the exception being a few oaks and ash who are often tardy and beg the question as to whether they going to join the throng, but they do. The next few weeks are magical as our lanes and woods take on their mantle of spring green, a very vibrant shade which lifts the heart of even the glummiest soul. Bare roads of a month ago have been transformed into tunnels of green. Later the green will darken which is why we should make the most of this season.



England is noted for its bluebells and this year was no exception but like all good things there is a downside, this is in the form of the Spanish variety. This was sold by garden centres in the past and very pretty it is too but sadly, like many introduced species, it readily hybridises with its native cousin and becomes a dominant cross. When walking in a local wood recently we found the largest number of plants were Spanish or mixed. Does it matter? Well, we lose the uniqueness of a familiar local plant which is important. So, if those pretty bluebells growing on your bank and garden have flowers growing all around the stem and straplike leaves - You've got it!



Near neighbours kindly contributed rabbit fur from grooming their pets to add to the collection of nesting material offered in the garden. It was comical to see sparrows and blue tits with big ginger moustaches carrying off this desirable material. RSPB advice is not to offer fur from animals treated for fleas or ticks nor provide long hair that could entangle chicks.

A foreign object alighting on spectacles proved to be a tiny ladybird clad in a suit of yellow and black. This speck of insect life was a 22 Spot Ladybird or *Psyllobora 22 punctata*, an impressive name for such a minute creature living on mildew.

Diana Tait and Rod Eldred

15th June 10.00am
St Mary's Hall Overton.

A Talk entitled 'A Conspiracy History of the World'



The Speaker is Andy Thomas, researcher into conspiracies, unexplained mysteries and cover-ups. He explores an alternative history of humanity seen by those who question the establishment version of events such as the Roman Empire, Gunpowder Plot, the World Wars, 9/11 and other huge controversies in a compelling and fascinating journey.
Free to members. £3 for non-members.

The Church Pages

Dear Friends

Alongside the celebrations for HM The Queen's Platinum Jubilee during the first week in June, the Church across the world will be celebrating the birthday of the early church, remembered as the time at which the disciples experienced a collective spiritual blessing. I wonder what your feelings are as we approach Pentecost?



I was once asked whether I was Pentecostal... My initial response, as a 'cradle' Methodist, was 'No!' However, it was one of those questions that would not go away and I kept thinking about what it really meant. I came to realise that it was not a question about which denomination I belonged to, it was a much deeper question that asked about my whole attitude to my faith and my response to God's grace. As I have thought about it more and more, three strands have emerged:

We are to be in one accord. When the day of Pentecost came, the apostles were all together in one place. There is more than safety in numbers: there is a confidence and an empowering that we find in being together with other people who share our beliefs, our value system, our outlook on life. However, there is a genuine risk that this gathering can lead to a kind of tribalism where it can seem to those "on the edge" that they are not welcome as part of the group.

We need to pray together. Earlier in the book of Acts (1.14) we read that "They all joined together constantly in prayer". Is this an activity we could share in across the village? No one church or group has a monopoly on prayer... Could we advertise the opportunities that exist to gather to pray so that even if people cannot be physically present, we could join in at the appropriate time? Please contact me if this would be something you could be involved in

We need to repent. Peter preached his sermon recorded in the book of Acts and the people responded by asking what they should do. His answer was 'Repent'. John Wesley preached more sermons on the text: "Repent for the kingdom of God is at hand.". It is the basic requirement for entrance into the Kingdom. This is not the guilt-inducing kind of repentance that can do more harm than good, but the sense that we are recipients of God's forgiveness and grace each time we seek it and that when we accept that gift, it transforms our lives and then the lives of those around us.

So, as Pentecost approaches, I invite you to join me to reflect on whether we are Pentecostal and what that could mean for both our spiritual lives and the life of our community.

Peace,

Rachel


Rachel Borgars
Methodist Minister



Worship in our Churches June

Sunday 5 th June	9.30am Platinum Jubilee Celebration Service St Peters, Headley	10.30am Platinum Jubilee Celebration Service St Mary's, Kingsclere followed by Picnic in the churchyard
Thursday 9 th June		10.30am Morning Worship, St Mary's, Kingsclere
Sunday 12 th June	9.30am Morning Worship St Peter's, Headley	10.30am Morning Worship with Junior Church St Mary's, Kingsclere
Thursday 16 th June		10.30am Morning Worship, St Mary's, Kingsclere
Sunday 19 th June	9.30am Morning Worship St Paul's, Ashford Hill	10.30am Morning Worship with Junior Church St Mary's, Kingsclere
Thursday 23 rd June		10.30am Morning Worship, St Mary's, Kingsclere
Sunday 26 th June	9.30am Holy Communion St Paul's, Ashford Hill	10.30am Morning Worship with Junior Church St Mary's, Kingsclere
Thursday 30 th June		10.30am Morning Worship St Mary's, Kingsclere

Due to the Bank Holiday on 2nd June there will be no Thursday Worship service and the Community Larder will remain closed too.
We hope you enjoy the Platinum Jubilee celebrations being held in the village, and look forward to seeing you again as normal on the 9th June.



Platinum Jubilee Celebration Service and Picnic
Everyone in our parish is invited to join the church communities in Kingsclere to celebrate Queen Elizabeth's Platinum Jubilee on
Sunday 5th June at St Mary's Church.
We will give thanks for her reign during a celebration service at 10.30am and then move into the churchyard for a Big Jubilee Lunch at 12 noon.
Bring your own picnic and perhaps something to sit on.
Tea and Coffee will be provided.

Kingsclere Methodist Church

5th June Joint service at St Mary's to celebrate the Jubilee
12th June Helen Watson
19th June De Ville
26th June Revd Jenny Ellis



Our Hall is available for hire (see back cover of this magazine for details).
You are welcome to join us for our coffee morning every Thursday 10.30am until 12noon!

Christine Westcombe c_westcombe@hotmail.com 07485083874

Lighting up St. Mary's

The sight of St Mary's Church when it is floodlit is truly beautiful. Many people sponsor these lights (£12 per evening) to celebrate an occasion, such as a birthday, wedding, anniversary, christening, or some other special day in their lives.

To book, contact Emma, our Church Administrator on 07422 687125 or email administrator@stmaryskingsclere.co.uk



April

22nd In Memory of Maureen Side

May

20th Gladys Smith - to celebrate her life after moving to Kingsclere during the war. From all her family.

29th Happy 40th Wedding Anniversary to Margaret and Ray Peach.
Lots of love Catherine, Raz, Nicki and Freyja



Kingsclere Tennis Club

If you would like to play tennis locally, Adult, Junior and Family memberships are available at very reasonable rates.
ALL WELCOME!

There is a simple booking system in place to make organizing play easier for all members.

To join or to renew your membership contact Adam Price on 07725 901362 or email: adamprice27st@gmail.com

Adults interested in playing organized social tennis sessions contact:
Thursday mornings - Daphne Snook on 07768 664347
Sunday mornings – Nigel Baker on 07785 763967

Dear Editor,

I know I have said all this before, but last month I was reminded of why Kingsclere is such a vibrant village and I would like to share this with you all.

On Saturday, 9th April, we were treated to a truly wonderful, professional concert at the Fieldgate Centre. The Kingsclere Singers and Thames Valley Chorus were in fine voice and we all enjoyed a cream tea. All for the cost of £7.50!!

I then returned home to cook dinner and found a couple of ingredients missing. A quick trip to Swan Street Stores remedied this as they had both ingredients in stock.

It took me longer than it should have as I bumped into three friends on the way home. The first asked whether I was on my way to the Easter Bingo Session at The Bowls Club, the next two asked me if I was on my way to The Village Club to watch a film organised by Kingsclere Film Club!

Whatever your interests, there is always something happening in Kingsclere.

My thanks go to all the organisations who stage these social events. They don't just happen. There are numerous volunteers with each society who make them happen. Thanks to all of you for keeping the village alive.

Pam Kitch

200 200 200 200 200 200 **FOSM 200 Club** 200 200 200 200 200

The May Draw winner was Val Wateridge – No. 3

Congratulations Val

The June Draw will take place at The Crown at approximately 7 pm on Tuesday 7th June.

Jane Royle jane.b.royle@gmail.com 01635 297430

Hannington Fair



19 June from 12pm-4pm

We are very pleased that The Hannington Fair is back this summer. It has long been a highlight of the village's calendar, providing a great opportunity for everyone within Hannington and the surrounding area to come together and of course to be able to welcome visitors from near and far to this beautiful corner of Hampshire which we're lucky enough to call home.

As in previous years, we are looking forward to an afternoon packed with fun for all the family. We have a fantastic line up of events, including a performance from **Kingsclere School**, dance displays from the brilliant **JLD School of Dance and Kingsclere Performing Arts College**, and the very talented **Cheam School jazz band** will be getting everyone into the groove. The demonstration by **Occasion Doves** not only promises to be very exciting, but they are also kindly helping raise funds for St Michael's Hospice with every dove released.

A key highlight of the day is always the dog show and this year will be no different. You don't need to have a Crufts' champion to take part as there are plenty of categories for everyone to get involved. There's also sheep shearing and plenty of farm animals to see up close. The village is busy preparing the usual wide range of stalls, with games, cakes, plants, and the tombola to name a few, and don't forget the prize draw! There will also be plenty of food, drink, and musical accompaniment, so we really are excited about this year's Fair.

We hope people will come and join the fun.

Tim May, Chairman of The Hannington Fair Committee



Kingsclere CE Primary School

So our final term of this academic year has begun and we have many exciting plans! Later this month our Year 5 and Year 6 pupils will embark on their exciting journey to Devon as part of their residential trip, taking on high ropes, surfing and team building activities. We will begin to welcome our new YR children as part of their transition to school as well as our Sports Day, Swimming Gala and whole school walk around the village. We will be very busy!



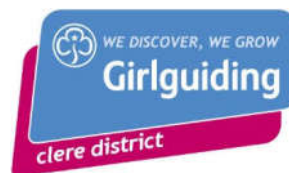
Mrs Melrose has begun her maternity leave and we wish her all the very best. She assures us she will be in touch when news comes and no doubt will be popping into school to see the children and staff. We know that all the children are very excited to find out if it is a girl or a boy!

It has been fantastic to continue with our extra-curricular clubs this term and to see the children's confidence grow. Science club explored forces in an attempt to solve a 'Bridge Blunder' and designed their own bridges using only a single sheet of paper, scissors and a ruler! We have continued to enjoy visitors to school to enhance our children's learning and understanding of the wider world. We had the great privilege of Olympic Gold Medal winning Paralympian Aaron Phipps visiting the school to share his achievements and challenges. The children were incredibly inspired and took part in games to develop their resilience skills.

Just before the May half term holiday we celebrated the Queen's Jubilee in style! We visited St. Mary's Church and led a commemorative service in honour of the Queen with our Year 6 Leaders sharing prayers and readings. We also held a 'Commonwealth Sports Week' where the children learnt new skills in PE alongside our Sports Coaches as well as discovering more about the Commonwealth and what role the Queen plays in championing it. We concluded the week with a fantastic Jubilee Day, complete with art activities and a Tea Party as well as performing a whole school jive! Thank you to all the parents and carers who came to support. We hope the village enjoyed all the community events too!



Mrs Joanna Messenger
Acting Headteacher



Rainbows have been having fun working on their Explorer badge, We learnt about Eid and tried some of the foods they would eat including some traditional biscuits with a date filling. We are also learning our promise in Makaton. As part of the Queen's Jubilee celebrations, we are doing crafts

with a royal theme and having our own tea party.

Brownies are currently learning basic first aid skills and CPR. We have been using clay to make models and sock puppets. The Brownies joined other girls from Silchester, Tadley, Baughurst and Bramley on a trip to Legoland. A fun day was had by all including riding on the rollercoasters. We are looking forward to the Jubilee celebrations and have an afternoon tea planned. We will be finishing the term with a sleepover.

Jumble Sale

In order to help us raise some much needed funds we will be holding a **jumble sale on 25th June 10am till 1pm at Kingsclere scout hut.**

Tea coffee and cakes will also be available.

We would welcome donations of clothes and bric-a-brac. No books please.

We currently have spaces for girls in both our Rainbow and Brownie unit.

If you would like to register your daughter please sign up at

www.girlguiding.org.uk or email kingscleregirguiding@gmail.com

The Big Sale is Back!

St Paul's Church, Ashford Hill



12 - 2 pm

Saturday 25th June

We would welcome your donations of the following items:

Bric-a-brac, Books, Good Quality Clothes, Hats, Handbags, Jewellery, Shoes

Small items of furniture by prior arrangement.

Cakes on the Day for refreshments please.

Entrance 30p

Your donated items can be delivered to St Pauls on Thursday 23rd or Friday 24th 2 - 4 pm

If you would like to help on the day please call Terry on 07768 795666 or email Lorraine.loricusworth@hotmail.com

Proceeds to go to church funds

Kingsclere Gardening Association

Our next event is
Evening Garden Visit
16 June 2022 at 7pm
Riverside Close, Overton



We are organising an evening visit to the lovely gardens owned by Cynthia and Tony Morris. The cost will be £5 per person to include refreshments. If you would like to attend, please contact Sylvia Pennington on 01635 298880 to book a place and confirm directions.

Don't forget we are holding our Annual Flower Show on
Sunday 21st August 2022 at the Fieldgate Centre.

If you would like to enter please contact Laura Butler for a Show Schedule on 07770 614971.

Beth Theobald (Secretary) 07916 032250.
 Facebook: Kingsclere Gardening Association.
 Please join our group.

News, events and schedules for show entries will be advertised there first.
Beth Theobald 07916 032250

Our next market is **Sunday**
26th June, 10.00am-12.30pm
 at The Fieldgate Centre.



NEW STALLS plus many of your old favourites will make this bigger and better than ever! Please visit our website for more details.

Sharing Stall Donate your surplus produce, plants or seeds. Everyone may take what you need at no cost.

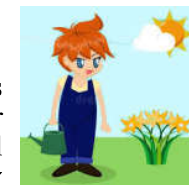
Recycling

At this market we will be accepting for **recycling**:
Batteries (not car), **Medicine blister packs**, **Plastic Milk Tops**,
Inkjet Cartridges (originals only, not compatible or laser),
Bras (*last time collecting*),
Eyeglasses (*last time collecting*).

*Market in partnership with the Kingsclere Community Centre.

Nicki, Sarah & Lucinda greenerkingsclere@gmail.com
www.Greener-kingsclere.co.uk

June in the Garden



Hopefully, summer has arrived. Many plants are early this year, I just hope that we get enough rain and cooler weather to slow growth slightly, otherwise the garden will be looking rather sad by the autumn. Not only are many plants early but the growth is also huge. Quite amazing how the garden can vary from year to year. Very strange considering how cool and dry the weather has been that we have seen so much growth. Watering will be needed for any recent, newly planted vegetables in the garden or in containers. Now is the time to plant out baskets and tubs for the summer displays. These will also need to be kept well-watered. Some vegetables can be planted outside now including runner beans and tomatoes.

Sow turnips, also salad vegetables which can be done at two or three-week intervals as this will give a continuous supply of fresh salad over a long period. Other vegetable seeds that can be sown are the oriental vegetable Pak Choi.

Early planted peas will be ready to be harvested. When all the crop has been picked, cut down the plants but leave the roots in the ground as this will add nitrogen to the soil. Follow peas with a leafy crop such as cabbage as these require a higher nitrogen content in the soil.

The flower beds and borders will continue to need attention. Remove any suckers that grow from roses. It is better to remove them below soil level as they are produced from the root stock. The flowerheads will need to be removed from the hellebore plants. Also, other flowering plants will need to be regularly deadheaded. This is to encourage a longer flowering period as the plants will be saving energy used to produce seed heads.

It should be safe to plant out bedding plants now. These are so useful for filling in gaps in the flower bed where the spring bulbs have died back and other early flowering plants have finished flowering.

Keep looking out for bugs as the summer progresses. Caterpillars can be devastating. They can munch their way through plants at an amazing speed. They are best removed by hand, not the most pleasant job but necessary.

Lilac and rhododendrons need to be dead headed also camellias giving the shrubs the best chance to flower well next year. Most plants in the garden will enjoy some form of feed to help with their continued growth. Plants to enjoy this month include the wonderful peony, hardy geraniums, lavender, honeysuckle, and dianthus.

Denise Allen

Royal British Legion

Tuesday 14th June marks 40 years since the cessation of hostilities after the Falkland confrontation of 1982.



We, The Royal British Legion - Kingsclere Branch will honour the heroes that fought gallantly and were either injured or gave their lives to defend the islands. A wreath will be laid on the Memorial at the centre of Kingsclere at 11.00am together with a meaningful eulogy conducted by Tim Gardner and others of the community. Tim was on active duty during this conflict and volunteered to speak because of his involvement.

Last month's VE day was honoured with a wreath presentation led by Mrs Cissie Edward assisted by her daughters, Ann and Mary. Cissie commemorated the day with not only the ceremony but also her 103rd birthday as she was born on the 8th May 1919. It was felt that she was ideal to lead the Memorial offering as she remembers the struggles and heartache of being a young woman during the 2nd World War.

Kingsclere Branch thanks everybody for their help. RBL Kingsclere meets next at 19.00 on 7th June 2022 in The Crown, Kingsclere and we are keen to greet guests and members who appreciate the good work that can be done for our Armed Forces. All welcome.

Jim Sanger 07717 467117

Kingsclere Cancer Research Fundraiser 2022



Thank you to everyone who has offered support for our Cancer Research Fundraising Ball taking place at Sandford Springs on 2nd September.

Prizes for the Silent Auction and offers of sponsorship have been coming in steadily and we have had the event underwritten, meaning all money raised goes directly to Cancer Research UK.

You can make a donation and find out more about the event on our website: <http://kingsclerecrf.org.uk/>.

We are still looking for prize donors and sponsors and would be delighted to hear from you if you feel you could help: KingsclereCRF@outlook.com.

The event can only be a success with the support of our community and you have not let us down! Thank you so very much.

Amanda, Beccy, Claire and Sean



KINGSLERE TWINNING ASSOCIATION

Our popular **Annual Duck Race** will return on **Friday 3rd June** the Jubilee Bank Holiday, at 3 pm on Popes Hill.

Cash prizes for the winning ducks - buy a duck and come to cheer it on!



Entry is £1 per duck, or £5 for 6. Ducks will be available outside The Crown from 10am on the day.

Perhaps we will also see you in the parade on Saturday.

It was wonderful to see old friends and new faces at the Spring Quiz. New members are always welcome; annual membership is just £5 per adult. As well as the opportunity to visit Cormicy in the beautiful Champagne region of France, membership includes reduced admission prices to most of our events and free French conversation/class (depending on confidence level). The next session is on Wednesday 8th June – come along and give it a go.

Please contact us for details regarding membership, French conversation or if you would like to receive newsletters about future events.

kingscleretwinning@yahoo.co.uk or phone Sue Watson on 01635 298940

BDDF free postal newsletter service

Our mission as your local adult disability charity is to make sure we are reaching those who need us. Please can you help us to reach members in our community who don't have or want access to the internet?



We are hoping to reach more disabled adults of all ages and those supporting the disabled community in a caring capacity. Do you have a neighbour, friend or relative who would benefit from receiving a regular printed newsletter posted direct to their address full of information about services available to them in Basingstoke? Please contact me if you would like them to receive that information.

Leave your name and address on our secure voicemail by calling 01256 423869 or email Amanda@BDDF.org.uk or drop a note into us at The Orchard, White Hart Lane. Amanda will arrange for a copy of our most recent newsletter to be posted. The newsletter as with all BDDF services are free to receive.

Please also advise if you require a certain format and we will do our best to accommodate.

Ship Inn
present

**The Kingsclere Singers “Summer Delights”
18th June 2022 at 7pm.**



Our 3rd concert at The Ship Inn Country Hotel will welcome The Kingsclere Singers. Our local choir, formally called ‘The Kingsclere Choral Society’, was formed in the 1920s by the addition of men’s voices to the WI choir. The name has now been changed to reflect a new style of choir and repertoire which we hope will appeal to a wider audience. The choir visits a variety of local venues performing music from the 15th-21st centuries from unison singing to close harmony, from Bach to Beatles, from Offenbach to ‘Often in the West End’.

We so hope you will join us at The Ship Inn Country Hotel. We will warmly welcome you and fill your heart with some favourites we all love.

Tickets £12 and can be purchased on Eventbrite. Alternatively you can request tickets by emailing Georgi/Vanessa: shipinnarts@gmail.com or phoning 01189 981 4504



VOLUNTEER DRIVERS NEEDED

ACTION Overton is a group of volunteers who provide transport for Overton residents to medical appointments at the surgery, hospitals or dental practices. We are part of the Good Neighbours Network in Hampshire. All mileage costs are reimbursed.

Over the last few years the similar group that existed in Kingsclere has become non-operational. With the combining of the doctors’ surgery into the community practice of Watership Down Health we have been asked to transport Kingsclere residents to Overton recently.

It would be really positive if there were a few drivers in Kingsclere that would be willing to join the ACTION team who we could call upon to provide such transport services. If you were a previous driver for the Kingsclere group or are recently retired and could spare a couple of hours per month, then please contact us

If you are interested and want to know more, please contact
Brian Elkins on 01256 771155 or via email at brian.w.elkins@gmail.com

Rural Crime

How to protect yourself. Advice from an Insurance expert.

I wanted to highlight common ways criminals are operating in rural areas and some fantastic examples I’ve come across of how people are protecting themselves:

Getting online – Although I appreciate this may not be possible for everyone, joining or even creating a village facebook/website provides a platform for local people to share suspicious activity and also photos of stolen items which in turn make it harder for criminals to resell.

Pet Theft – Tips to protect your furry friends include recall training, discreet GPS collars, shaking up your walks so you have no set routine and if you are a breeder, don’t advertise your address and ask buyers for proof of address and identity.

Garage and Shed Thefts – Some people choose to instal CCTV. However there are cheaper methods including shed sensors and shed alarms which can either detect movement or force and trigger either an alarm on the outbuilding or an alarm to your phone. Traditional methods include padlocks, fake CCTV signs and security bars.

Tool Theft – Make sure you engrave, name and photograph your tools and if possible, register them. This makes them much harder to resell and less theft attractive as a result.

Door to Door Thieves – Some thieves act as meter readers or charity volunteers – always ask for proof of identity electronically as well as a physical ID.

Repeat Incidents – If your community has been targeted by criminals one night, there is a very high chance they will be back within the week. Double check the locks on your property and consider leaving a few lights on to act as a natural deterrent.

Check In – Often in small communities the elderly and vulnerable are targeted. Check in with neighbours and make sure they feel safe and protected.

Insurance – Check your cover to make sure you are adequately insured just in case the worst does happen.

From what I have learnt, it’s when we work together that change really happens and if we work together we move one step closer to minimising rural crime.

If you would like to discuss any of the points above or insurance cover, please feel free to email me on Francesca.main@nfumutual.co.uk.

Francesca Main

THE KINGSCLERE TOWER DIRECTORY

POLICE, FIRE or AMBULANCE **Emergency 999**
 Police Enquiries/Information **non Emergency 101**

Kingsclere Health Centre: 01635 296000
North Hampshire Hospital, Basingstoke 01256 473202

Parish Council: 37 George Street (see page 2) 01635 298634
Dial-a-Ride 01256 462101

CHURCH CONTACTS

St. MARY'S CHURCH:

Vicar TBA

Church Warden:

Administrator:

Emma Rivers 01635 299528
 administrator@stmaryskingsclere.co.uk 07422 687125

METHODIST CHURCH:

Minister: Rev Rachel Borgars 07889 905753

Rachel.Borgars@methodist.org.uk 01256 895878

Secretary & Hire of Hall Jeanette Billington 01635 297585

ROMAN CATHOLIC: Rev Patrick Tansey 0118 9814572
 tadley@portsmouthdiocese.org.uk

Bas & Deane	01256 844844	Swan Street P O	01635 297035
Buses	0345 8101000	Vet	01635 297557 or 40565
Trains	0845 748 4950	Dentist	01635 299981
Gas Emerg.	0800 111999	Age Concern Local Agent	0800 3287154
Chemist	01635 298419	Watership Down Health	01635 296000
Kingsclere Library	01635 297464		

BOROUGH COUNCILLORS

Ken Rhatigan 07850 530319 cllr.ken.rhatigan@basingstoke.gov.uk

Stuart Frost 07961 265719 cllr.Stuart.Frost@basingstoke.gov.uk

Kerry Morrow 07422 651172 cllr.Kerry.Morrow@basingstoke.gov.uk

COUNTY COUNCILLOR

Tom Thacker 01264 738464 tom.thacker@hants.gov.uk

MP for N.W. Hampshire:

Kit Malthouse 01264 401401 kit.malthouse.mp@parliament.uk
 2, Church Close, Andover, SP10 1DP

**There is a more comprehensive list of local contact numbers on the
 Parish Council website. Go to www.kingsclere-pc.org.uk/directory**