



The Kingsclere Tower

What's On & Local News
MARCH 2023

The Kingsclere Tower

EDITORIAL TEAM: Mike Stokoe, Stephen Steare, Steven Gaines, Cathy Williams
 ADVERTISING: Brian Elborn b.elborn345@btinternet.com tel 298704
 DISTRIBUTION: Brian Elborn tel 298704
 ASSEMBLY: Andrew Kitch tel 299743
 PRINTERS: Kingsclere Design and Print
 COVER PHOTO: Hazel catkins (Cathy Williams)

We welcome Lydia Harley-Tomlinson as a new contributor to Nature Notes this month replacing Rod Eldred and Diana Tait who have taken a well-deserved retirement. See page 19.

The Annual Parish Meeting occurs on Monday 11th March, so if you want to know what is going in your village or perhaps would like to express any concerns you may have, this is the time to make your contribution. Page 4 for more information.

The Community Larder has become a support for a number of families in the village during these challenging times. If you know anyone who might benefit, please let them know the Larder is open every Thursday afternoon in the Kingsmill Room. More details on page 3.

The Kingsclere Charities are also a source of help to those in need. They provide grants for a limited number of activities mainly to do with health and education. Please read page 23 for details.

Good news! St. Mary's Fete is being held on August Bank Holiday and village events are going ahead for the Coronation weekend.

The Editor

Neither the Editors nor the Management Committee accept responsibility for the opinions expressed or the goods and services advertised in the Kingsclere Tower magazine. The Editors reserve the right to omit, amend, or condense any item submitted for publication.

To all "Tower" Contributors

Copy for April 2023 to the Editor at: kingscleretower@gmail.com

NOT LATER THAN 12th March 2023.

If possible please submit articles as a MS Word document, A5 page size, font Times New Roman 11, single spacing. *If email not possible, post to:*

23 Swan Street, Kingsclere, Newbury RG20 5PP.

Will ALL contributors please include full name and contact phone number/email address.

Kingsclere Parish Council

Chairman: Cllr Clive Mussett (07800 022432)

Email: clerk@kingsclere-pc.org.uk

Telephone: 01635 298634

Office: 37 George St, Kingsclere RG20 5NH

Please call to make an appointment to visit the office



KINGSCLERE'S ANNUAL PARISH MEETING: Monday 20th March 7.30pm hosted by KPC. The event will be held in the Village Club. Our guest speaker will be Rachel Campbell, Chief Officer at Citizens Advice Tadley. Please do get in touch with the Clerk to the Council to register your attendance. See the separate notice (Page 5) for further details. We do hope many of you will come along on the evening.

ANNUAL VILLAGE SPRING CLEAN; Saturday 1st April 10.00am. Our village Litter Warden does an amazing job and KPC is very appreciative of his hard work, however, once a year we assist and go that little bit further afield and gather items that may not be covered in the warden's round. Please do come along to the base in the Churchyard and volunteer for an hour. Litter wands, hi-vis waistcoats and gloves will be provided but please wear sensible footwear. We look forward to seeing you.

2023 PARISH COUNCIL ELECTIONS 4th May – Elections are held for town and parish councils every four years. The next local elections will be held on Thursday 4th May 2023. KPC would be delighted to hear from interested candidates in the coming months so informal discussions about the role can take place and you could potentially come along to a few meetings to get an idea of the projects and the level of commitment involved.

VOTING – please be aware you need a photo ID to vote. Examples of this would be a driving licence, passport or an older person's bus pass. If your photo ID is out of date, according to the website, it can still be used if the picture still looks like you. There are many other forms of ID please look at the website for details. Alternatively, you can apply for a free Voter Authority Certificate. Please look at the Basingstoke and Deane Borough Council website for more details or contact customer services 01256 844844 for advice and information about any of the above if you do not have internet access.

PARISH COUNCIL SURGERIES – KPC will soon be commencing regular contact surgery sessions with the aim of being more accessible to you, the residents we represent. Please keep an eye out on social media for the first date. There will be a feather flag placed near the church on the day the Councillors are available. More details will follow once this has been formalised.

GREEN WHEELY BINS & GLASS RECYCLING – the collections dates are Wednesday 8th and 22nd March and 5th April 2023.

MAKING A DIFFERENCE AWARDS 2023 – 15th June 2023. The nomination form is now available on Kingsclere Parish Council's website to nominate your chosen person. We ask you to help us recognise those residents who deserve a big public thank you for their commitment and contribution to the village. Thank you for the nominations received so far.

COMMUNITY CALENDAR on the KPC WEBSITE - the calendar is now live. Please do make use of it to check local events and meetings. Again, there is a form on the website to complete to enable your organisation or group to post events. Please do contact the Clerk to the Councillors if you do not have access to the website but would like events added.

NEXT PARISH COUNCIL MEETING – The next full Council Meeting will be at 7:30pm on Monday 27th March 2023, in the Village Club. We welcome the attendance of all parishioners at our meetings and anyone who wishes to raise any matters of concern will be given the opportunity to do so during Public Questions.

For further information on anything in this article please contact Clerk to the Council on the email/telephone number given.

The Parish website: www.kingsclere-pc.org.uk



@kingsclerepc



facebook.com/KingsclereParishCouncil

Community Larder

**Open Thursdays 2.30-4pm in the Kingsmill Room
(on the side of St Mary's Church, Kingsclere)**

Are you in need of food?

If so, please come along to St Mary's Church and for £3 you can choose one bag of dried/tinned items and one bag of fresh/frozen food. Enjoy free refreshments and a chat too. There are no questions asked and no proof required. We want to help all those in our local area that need support.

Thanks to kind donors we are able to stock our shelves with tins and dried food each week. Fresh and frozen food is delivered by the Community Food Link, an organisation in Basingstoke that collects food nearing its best-before dates and distributes it to local food banks and larders.

Donations are always welcome – please bring along any tinned or dried goods or household items to the Kingsmill Room on a Thursday morning, 11.30am-12.30pm. Thank you.

If you have any questions about the food bank please ring the church office on **01635 299528** or **07422687125**.

Kingsclere Neighbourhood Plan



The Government are currently consulting on changes to the National Planning Policy Framework in the updated Levelling Up Bill. In a recent letter to Local Authorities, Michael Gove stated *"It will be up to local authorities, working with their communities, to determine how many homes can actually be built, taking into account what should be protected in each area"* he further states *"I do believe that the plan-making process for housing has to start with a number. This number should, however, be an advisory starting point, a guide that is not mandatory...."* Many of the proposed changes give greater weight to Neighbourhood Plans which is to be welcomed. The Borough Council and Kingsclere Parish Council will be submitting responses to the consultation but in the meantime, the consultation on changes to the Local Plan is still 'on hold' meaning work on the revision to our NP is also delayed.

The NP Group have, however, been looking at possible new sites for development. If anyone has land close to Kingsclere's settlement policy boundary which they would be willing to put forward for the development of 10 or more houses, please contact me and we will include your land in the site assessment process.

If you have not already done so, **please complete the Kingsclere housing needs questionnaire**. We need to know if views have changed since the NP was completed in 2018. The online questionnaire can be found on the Parish Council website. It only takes 5-10 minutes. Alternatively, if you prefer a paper copy kindly email me at the address below. Please share widely in the village so we get as many responses from as wide a range of people as possible

Cllr. Sue Adams Cllr.sue.adams@kingsclere-pc.org.uk

Wolverton Village Market

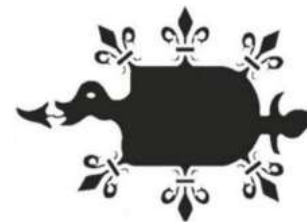
The next Market is on **Saturday 4th March in the Village Hall from 9.30am until 11am.**

Stalls will include homegrown produce, Bric a Brac, household products, books and puzzles, handmade candles and Cards and antiques and collectables.

Tea, coffee and biscuits are available to buy and to enjoy while you shop!

Please come along and support us. Entrance is free and there is parking available outside the Hall.

For further information or if you might be interested in having a stall please **contact Wendy Morgan on 01635 297538**



Kingsclere's Annual Parish Meeting

**To be held at Kingsclere Village Club, 35 George Street on
Monday 20th March 2023 at 7:30pm**

We welcome

Rachel Campbell, Chief Officer at the Citizens Advice Tadley

Rachel will talk about how Citizens Advice helps local residents, how the service has adapted for the Cost-of-Living crisis and announce plans to help the residents of Kingsclere in a targeted way. Rachel has a wealth of experience, having worked as a Volunteer and Debt Advisor, Macmillan Caseworker and an Advice Services Manager.

Local Clubs and Organisations

Come and meet the people that run your community organisations. Representatives from many village groups have been invited to come and tell us about what they've been getting up to in the past year. Come and get involved.

Kingsclere Residents

There will be an opportunity for you to raise any matters of concern with the invited Parish, Borough and County Councillors.

Cllr Clive Mussett - Chairman of Kingsclere Parish Council

Will summarise the achievements and work in progress of your Parish Council since last year's Annual Meeting

All residents are encouraged and welcome to attend

Discover what has been going on in the community in the last year and how you can contribute by joining a club, volunteering or just coming along to watch

Kingsclere Parish Council are hosting the event and hope you will stay on for light refreshments after the meeting

Please RSVP to clerk@kingsclere-pc.org.uk (for catering numbers)



**Kingsclere Community Association
invite you to attend its
Annual General Meeting
on Wednesday 15th March, 2023 at 7.00pm.**

The AGM is an opportunity for Kingsclere residents and users of The Fieldgate Centre to hear reports from the trustees on the past year, to consider plans for the next year and to influence the future of our community association and the community centre. Please contact us in advance if you are interested in becoming a trustee. All welcome. Refreshments available.

What's on in March...

Mon 6th Kingsclere Youth Club (Ages 11-13yrs) **5-7pm**

Wed 15th KCA AGM (see above) **7pm**

Sun 19th Ceroc Workshop 1.30-4.30pm Contact Val 07958 587256,
or email val@cerocpr.co.uk

Tue 21st Monthly Meet-Up 2.30-4.30pm All welcome. Pop in for chat, refreshments and optional activities. Helpers welcome. Contact the office if you need a lift and we'll try to help..

Sun 26th Greener Kingsclere Market 10am-12.30pm

Sun 26th "Musical Allsorts" with Kingsclere Singers & Guests 4-5.30pm
Join us for music, tea and cake. Tickets £10 on the door

Tickets are on sale now for...

Jan Jack's Comedy Club Night Saturday 29th April. Doors open 7.15pm.
Tickets £15. (Over 18s only.)

<https://www.ticketsource.co.uk/kingsclere-community-association>

The main social area is open as a welcoming 'warm hub' on most Wednesday mornings from 9.30am-1pm. (We advise calling the office to check before arriving.)

Please visit our website and Facebook page for more detailed information, where you'll also be able to provide feedback and tell us how you would like to be involved.

email: fieldgatecentre@outlook.com

telephone 01635 298497

www.thefieldgatecentre.co.uk

The Fieldgate Centre is run by Kingsclere Community Association, as a charity (No 1168366). The association is made up of volunteers who rely on the support and participation of the community.

**Next Market
Sunday 26th March, 10-12.30
at the Fieldgate**



Support small local sustainable businesses.

This market INCLUDES a 'Women's Clothing Exchange'

Fight Fast Fashion! Clothing is expensive, for your pocket and the planet. Please see details on our website and FB page.

Recycling at the market: Batteries (not car), **Medicine blister packs, Plastic Milk Tops, Inkjet Cartridges** (originals only, not compatible or laser), **Bras, Eyeglasses.**

*Market in partnership with the Kingsclere Community Centre.

First **Repair Cafe** is tentatively scheduled for March – please see the website for date and details. This is not the same day or location as the market.

Nicki, Sarah & Lucinda greenerkingsclere@gmail.com
www.Greener-kingsclere.co.uk

Kingsclere Local History Association



Our next meeting will be on **Thursday 16th March**
when horologist **DAVID POOLE** of the
Whitchurch History Society will give us an illustrated talk:

"CLOCK MAKING PAST AND PRESENT"

David is an independent clockmaker and past Master of the Worshipful Company of Clock Makers. A real expert in his field, we are privileged to be able to hear from David about the history and the techniques involved in the development of clocks over their long history.

We meet at **Kingsclere Village Club, 37, George Street, at 7.30pm** and visitors are very welcome at £3 p.p.

This will be our last speaker meeting of the current series and the next programme will commence in September.

We will continue to open the Village Archives on Monday afternoons in the Holding Room at the Village Club from 2.00pm till 4.00pm and we welcome enquiries for information.

Michael Leah, Secretary 297403

Kingsclere Gardening Association

Our next meeting is
An Evening Talk – Gilbert White the Gardener
 Presented by David Standing
9th March 2023 at The Village Club. Doors open 7pm



The talk commences at 7.30pm. There will be refreshments and a raffle after the talk. Free to members and £3 for non-members, under 18s free.

Sadly our submission was not printed last month, so apologies if you were looking for information on last month's evening talk. (*Our Apologies-Ed*)

Membership renewals for the year are now due. We would love to welcome new people into the club. Please come along to any of our evening talks or shows to join. Please note, we are only able to take cash at this time. Below is a list of benefits:

- Very low Membership fees; £8 for adults, £6 for senior citizens, under 18s free
- 5 free evening talks with free refreshments.
- A members' "Points Competition" for exhibits brought along to the evening talks. The winner is announced at the AGM.
- An exclusive summer event for the KGA to visit a private or public garden with a nominal entry fee.
- Two flower shows, one in April and one in August, judged to RHS show standards with experienced judges.
- Club membership of The Daffodil Society.
- Club membership of the Dahlia Society.
- Club membership of the RHS including the opportunity for a 2 for 1 visit to an RHS garden for 2 members.
- Club membership of the Hampshire Federation of Horticultural Societies
- Access to members with vast general plant and cultivation knowledge.
- Access to members with specialist interests including dahlias, daffodils, pelargoniums/geraniums, allotment/vegetable growing, flower arranging and gardening for flower arranging, hostas and succulents.

We hope you will agree, for the cost of 2 or 3 takeaway coffees, it is incredible value for money.

Upcoming Events:

Our first show of the year is our **Spring Show on 2nd April 2023** at the Village Club. This is very much a bulb and daffodil show. There will be classes for "members only", "entry on the day" and "Kingsclere residents only". There are also "kids only" classes.

Our annual village **Plant Sale**, in association with FOSM, will be held on **20th May 2023** at the Church Yard. We would love as many donated plants as possible. Please consider what you could sow, split or propagate for the sale. We are very much looking forward to these wonderful events in the coming year.

Beth Theobald (Secretary) 07916 032250

Kingsclere Community Library

We are delighted that our library continues to grow, with new borrowers joining weekly. We're happy we have new books to come soon, expanding our collection in all sections. Watch out for some new upgrades to the Children's Library and the Teen/Young Adult section!



Thanks to everyone who joined in our Valentine's Raffle, by entering a book they loved! The winner of a book token was selected on Valentine's Day and announced on our Facebook page (too late for this magazine).

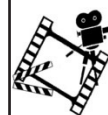
We are always in need of volunteers to keep our doors open, so if you have two hours per month (or more!) to help us out, do please get in touch.

HOURS Tuesday & Thursday 1.00pm - 5.30pm

Saturday 10.00am - 1.00pm

Nicki Lee, Kingsclerelibrary@gmail.com www.kingsclerelibrary.co.uk

Library phone number: 01635 297464



**Kingsclere
Film Club**

Saturday 11th March 2023 at 7.30pm
Kingsclere Village Club, George Street
Doors open at 7.00pm

Green Book

(2018 - 12A - 130min - 3 Oscars)

A working-class Italian-American bouncer becomes the driver for an African-American classical pianist on a tour of venues through the 1960s American South.

Next month: Saturday, 8th April 2023

Belfast

(2021 - 12A - 97min - 3 Oscars)

Kingsclere Film Club welcomes guests at £7.50.

New members are welcome at any time.

For further information call: **Diana Tait (Membership Secretary) 298494**

Watership Down Health



Care Co-ordinator for Cardiovascular Disease (CVD)

Philip Amps has now started working for the Primary Care Network which is Watership Down Health and Tadley. Philip has worked in the NHS for 16 years in Primary and Secondary care as a GP surgery practice manager, diabetic administrator, speciality co-ordinator and a short period as a healthcare assistant. Working predominantly with the Lead CVD GPs for both Partnerships, the cohorts he will mainly coordinate with are patients with the following conditions:

- Cardiovascular Disease (CVD)
- Hypertension
- Strokes and Transient ischaemic attacks (TIA)

March is Ovarian Cancer Awareness Month

Do you know that 90% of women don't know the four main symptoms of ovarian cancer? Knowing this information could be lifesaving, as an early diagnosis can make all the difference. Share this information with your family and friends. Ovarian cancer has four main symptoms:

Persistent stomach pain	Difficulty eating/feeling full more quickly
Persistent bloating	Needing to wee more frequently

These can also be symptoms of other, less serious, conditions such as irritable bowel syndrome, ovarian cysts and polycystic ovary syndrome so if you're experiencing them it doesn't necessarily mean you have ovarian cancer.

Ovarian cancer symptoms might also include back pain, changes in bowel habits (going more often or a lot less), unexplained weight loss, post-menopausal vaginal bleeding and extreme tiredness for no obvious reason.

If your symptoms are: Persistent, Severe, Frequent, Out of the ordinary

Make an appointment with your GP!

First Contact Practitioner (FCP)/Physiotherapist

If you have a new problem with your back, neck, bones, muscles or joints, you can see our specialist First Contact Physiotherapist (FCP) instead of a GP.

This gives you faster access to expert diagnosis and you'll leave with the advice and exercises you need to start tackling the problem. This service works best when you see the FCP as your first contact at the practice – so our reception team can book you straight in to see them, without needing to see a GP first.

The Church Pages



Dear Friends

*"Through all the changing scenes of life,
In trouble and in joy,
The praises of my God shall still
My heart and tongue employ."*

Nahum Tate and Nicholas Brady (Singing the Faith 638)

The opening verse of that hymn is one of my favourites for it speaks of the constancy of God and the recognition that whatever life may bring for us, we are people created for praise. So often we allow ourselves to worry so much about the sorrows and difficulties that we encounter that we forget to praise God. I'm not suggesting that our praise should be glib or shallow or deny how we are feeling. It is right and proper to feel and experience a whole range of emotions at different times, but, "it is our joy and our salvation, always and everywhere to bring our thanks and praise".*

This time of year called Lent when society is of the opinion that the church is concerned only with giving up chocolate or alcohol or anything else that one enjoys, I believe we have a different message to share... That message is one of a Saviour who "is not a high priest unable to sympathise with our weaknesses, but one who has been tested in every way as we are only without sinning. Let us therefore boldly approach the throne of grace, in order that we may receive mercy and find grace to give us timely help." (Hebrews 4:15-16). Living life in the Christian tradition is not about giving things up for six weeks in a year and being miserable until Easter Day arrives, it's about receiving mercy and grace, knowing that we are forgiven and allowing that knowledge to influence every part of our lives. It's about remembering that we do all this following in the steps of Jesus, who was afraid himself, was betrayed by his friends, got angry and wept at the tomb of a friend.

It is a good discipline to spend a specific period of the year reflecting on our Christian journey so far. Looking back at the good parts and learning from the bits that we wish had happened differently. But, whilst the journey through Lent may lead to the cross and God's ultimate gift of life for humanity through the death of Jesus, it does not end at the cross and that surely is a reason to praise our God whose love has no end.

Shalom,

Rachel

*Methodist Service Book p. B12

Rachel Borgars
Methodist Minister

St Mary's Church

Worship in our Churches

March 2023



Services in our churches will be as follows:

Thur 2nd		Morning Worship 10.30am St Mary's, Kingsclere
Sun 5th	Holy Communion 9.30am St Peter's, Headley	Holy Communion 10.30am St Mary's, Kingsclere
Thur 9th		Morning Worship 10.30am St Mary's, Kingsclere
Sun 12th	Morning Worship 9.30am St Peter's, Headley	Morning Worship 10.30am St Mary's, Kingsclere
Thur 16th		Morning Worship 10.30am St Mary's, Kingsclere
Sun 19th Mothering Sunday	Morning Worship 9.30am St Paul's, Ashford Hill	Morning Worship 10.30am St Mary's, Kingsclere
Thur 23th		Morning Worship 10.30am St Mary's, Kingsclere
Sun 26th	Holy Communion 9.30am St Paul's, Ashford Hill	Morning Worship 10.30am St Mary's, Kingsclere
Thur 30th		Morning Worship 10.30am St Mary's, Kingsclere

www.stmaryskingsclere.co.uk

Kingsclere Methodist Church

Services for November

Sun 5th	Rev Rachel Larkinson
Sun 12th	Malcolm Stone
Sun 19th	Christine Thomas
Sun 26th	Worship Leaders

Services start at 10am

Coffee Morning every Thursday 10.30am, all welcome
Hall for hire (see back cover for further details)

On **Friday 3rd March at 7pm** there will be a

World day of Prayer Service

in Kingsclere Methodist church hosted by the Catholic ladies in Kingsclere.

This is an ecumenical service, and all are welcome,

Christine Westcombe email c_westcombe@hotmail.com

Lighting up St Mary's

The sight of St Mary's Church when it is floodlit is truly beautiful. Many people sponsor these lights (£12 per evening) to celebrate an occasion, such as a birthday, wedding, anniversary, christening, or some other special day in their lives.

To book, contact Emma, our Church Administrator on **07422 687125** or email: administrator@stmaryskingsclere.co.uk



March

15th Remembering Paula Tait. A year without you. So sadly missed by all her family and friends.

28th Remembering Jim Soper on his birthday, with love from all the family x

31st Love you Dad x

St Mary's Church - Saturday Coffee

Freshly brewed coffee, tea and delicious homemade cakes.
All welcome – please do pop in!

March 4th, 11th and 18th 10.00-12.00 in the Kingsmill Room
Volunteers welcome – if you're able to pour coffee, welcome people or make cakes occasionally please do contact the church office on **01635 299528**.

Kingsclere Methodist Church

Following the success of the last **lunch** we are hosting another one on Saturday **11th March in the Methodist Hall from 12pm until 2pm**.

The simple Lunch will consist of a bowl of homemade soup, a filled roll of your choice, a cup of tea or coffee and a piece of cake. The cost will be £4 per person.

There will also be a Raffle with lots of prizes.

This a fundraising event for our Church and we hope you will come along and support us and we look forward to seeing you.

Wendy Morgan 01635 297538

Friends of St Mary's Kingsclere Ltd

Our next annual event is the always popular and well-supported

Plant Sale with Kingsclere Gardening Association in St Mary's Churchyard on the morning of Saturday 20th May

At the time of writing, our keen gardeners are ruefully counting the costs of wintry extremes of rain and heavy frosts. If you are splitting any plants in the next few weeks, or sowing seeds and have some young plants to spare, we should welcome contributions for the Sale. Please contact **Jane Royle on 01635 297430 or by email to jane.b.royle@gmail.com**

FOSM's major event of the summer will be our

Open Gardens Trail, from 2pm. to 6pm on the afternoons of Saturday 24th and Sunday 25th June.

We hope to have an interesting range of gardens, at least half of which have not previously been open. Tickets, valid for both days, will be on sale at the Church together with a map. Further details will be published as planning progresses. Please put the dates in diaries now! **Peter Turner, Chairman**

For membership and other enquiries contact: **fosmkingsclere@gmail.com**



FOSM 200 Club

The winner of the February Draw was Dennis Dunn – No.20

Congratulations, Dennis

Next month's Draw will take place at The Crown at approximately 7 pm on **Tuesday 7th March**

Jane Royle jane.b.royle@gmail.com 01635 297430



St. Mary's Village Fete

**Good News! – The Village Fete is back again for 2023
Keep the date free – Monday 28th August.**



All the usual stalls, raffles and dog show – plus hopefully a few new ones. Look out your unwanted bric-a-brac, toys and books.

We shall be needing lots of help, so please contact us if you are willing to run a stall, have a contact where we can obtain donations of raffle prizes or help set up and clear away afterwards.

All help will be gratefully received!

Tel: Sara Hannan – 299550 or Email: pamkitch16@gmail.com

Annual Parochial Church Meeting and Full Revision of Electoral Roll for St Mary's Kingsclere

The Annual Parochial Church Meeting is to be held on the **23rd April** during the **10.30am Service in St Mary's Church**. This is the occasion when we celebrate what has been happening in our church community over the past year and conduct business such as elections to the posts of churchwardens and the Church Council.

By enrolling on the electoral roll, you become a voting member of the Church of England and are able to attend and vote at the meeting. It also gives an indication of the real membership and strength of the church in our parish.

If you would like to be added to the roll, please visit the Benefice website: **www.stmaryskingsclere.co.uk** and click on Electoral Roll Form (under "What we Believe").

If however, you do not have access to the internet, paper forms can also be found at the back of St Mary's Church. Please complete and return to the Church Electoral Roll Officer or Churchwarden before the deadline.

The deadline for applying to be on the Electoral Roll is **6th April 2023**

The requirements for joining the roll are:

**Being baptized and over the age of 16, willing to declare yourself a member of the Church of England AND*

**Either resident in the parish or have habitually attended worship in the parish for six months prior to enrolment.*

Les Wallace – Church Electoral Roll Officer

Kingsclere & Headley Woodlands W.I.

Kingsclere Village Club, 35 George Street



We have started 2023 with two excellent speakers and I'm sure that our speaker in March will be equally as enjoyable. We will be welcoming back

Dr Paul Sievers whom we last heard from in 2022 and who was very well received. This month, on **8th March**, he will be telling us of an exciting '**Trip to Japan**'. Dr Sievers is a retired GP from Newbury and has travelled far and wide so our members are sure to be enthralled with his latest talk.

We meet on the second Wednesday of the month, starting the meeting at **1.45pm at the Village Club, 35 George Street**. Why not come along and join us? We have had several new members recently and I can assure you that you will receive a very warm welcome from our very friendly members.

Margaret Geary, President tel 01635 297197

Shipinnarts

The Ship Inn Country Hotel, Ashford Hill, RG19 8BD

Tel: 01189 814504

See Events 2023 on our website for more details:

<https://shipinnarts.org/> Tickets on Eventbrite or direct from The Ship



What's on in MARCH

Come and join us! You will be warmly welcomed.

Fri 3rd 7pm – 10pm Open Mic. FREE

Tue 14th 11am – 2pm Craft event :The Beauty of Mothering Sunday
Please bring your own lunch. Tickets £5

Sat 18th 12 midday – 5pm Afternoon and evening events
Performances/arts and crafts in the afternoon 3pm
Tony Harris, actor and comedian, will perform *Henry VIII*!
Tickets £8 for whole afternoon. Children FREE.

Performances in the evening

7pm – 9pm Callum Gardner, singer and acoustic guitarist.
Also joining him, Ronnie Ciamponi on guitar, Max Anstruther on piano and Arlen Millward on drums. They will perform a variety of pop and well-known music, Beatles, Bee Gees, Fleetwood Mac, Bob Marley and more! **£12 a ticket**

Fri 24th 11am – 2pm Wellbeing Workshop (Free)
Coping with loss, the grief of losing someone you love.
Bring your own lunch.
Vanessa, Georgi, Hazel, Jon and Alison - Shipinnarts Team

Kingsclere Twinning Association

BEDBUG DRIVE



A Beetle Drive with a Kingsclere Twist!

Saturday 18th March at Kingsclere Primary School, 6.30pm.

Everyone welcome and fun for all the family!

Tickets include a **Two-course hot supper** with a **cash bar** available!

£2.50 per child (4 years old and under **free**) **£10** per adult

Tickets from Sue Watson 01635 298940 or

kingscleretwinning@yahoo.co.uk

KINGSCLERE VILLAGE CLUB

Est. 1921 CHARITY 1189234

<http://www.kingsclerevillageclub.co.uk>

<https://www.facebook.com/kingsclerevillageclub>



ABB (formerly the Average Blues Band)

The ABB guys are back! Join us for a great evening of live music, hot supper and good company.

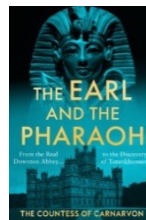
"Everyone enjoyed themselves, forgot their worries for a while and went home happy."

Friday 31st March, doors open 7.30pm. £17 from Helen (below) or online at www.wegottickets.com/event/568297/



The Earl and the Pharaoh

You may be in time to reserve last-minute tickets for **An Evening with Lady Carnarvon. Thursday 2nd March**
Doors open 7.15pm. Tickets £10 from Helen (below) or
www.wegottickets.com/event/568306
Proceeds to our greener heating fund.



Community Cafe

The March café is on **Saturday 25th 10am to 1pm**, with a quiz at 11 o'clock and a children's craft table. Reasonably priced hot and cold drinks, cakes and snacks in a friendly and welcoming atmosphere. All welcome.



Energy Efficient Project

Progress is being made! At the time of writing, we are close to achieving the necessary planning permissions to go ahead with installing the new heating system. Most windows have now been refurbished (in some cases, rebuilt) and secondary glazing installed. A very big thank you to David from Juniper Joinery for his hard work and dedication. Also, thank you to our tenants and hirers who have put up with the disruption with understanding and flexibility. We are still fundraising for this project and donations can be made via:

<https://checkout.justgiving.com/c/3308045>

Save the Date:

6th May Coronation: plans are not finalised yet but we will definitely be marking the occasion

21st May Market

9th June Shakespeare in the Garden

9th July Market

Helen 297390 or events@kingsclerevillageclub.co.uk

March In The Garden

The month of March can have a variety of weather from cold winds, snow, and warm sunshine but whatever the weather we have the comfort of knowing that the days will be longer with the clocks going forward. The garden will be looking colourful with the spring bulbs and early flowering shrubs.

Prune roses this month, aiming to cut out stems that crossover. Other shrubs to prune include forsythia, lavender, mahonia, late-flowering clematis, hardy fuchsia, dogwood, cotinus, and any damaged branches on trees or shrubs.

Time to sow broad beans, brussels sprouts, leeks, parsnips, peas and hardy annuals. All these can be sown outside. Seeds to sow indoors include basil, beetroot, cucumbers, lettuces, parsley and celeriac.

A reminder to repair lawn edges by cutting out a piece of turf at the edge of the lawn where they have become worn and then turn the turf around so you have a nice clean edge whilst adding extra soil to level up and to fill in any gaps. The lawns will be growing now so do remember to keep the mower blades high for the first few cuts to avoid damaging the grass.

Time to divide hardy perennials and take basil cuttings. This is really a good way to increase your favourite plants. Now is also a good time to give perennials support before they become too tall.

Lily bulbs can be planted now, and gladioli corns. Both can be planted in pots. Unfortunately the lily flower will attract the lily beetle so they need to be examined every day otherwise the beetles will enjoy a feast on their leaves .

Cut back any hedges now before the birds start to nest. Also, prune autumn fruiting raspberries back to ground level. Prune fruit trees removing dead, damaged or diseased branches.

Potatoes should be ready to plant out and onion sets can be started. Plants to enjoy this month include anemone blanda, grape hyacinth, narcissus cheerfulness, candelabra primula and the pulmonarias.

Denise Allen

Dear Editor

Thank you so much for your kindness!

Thank you to the very kind lady who saw my blind friend Alison standing in the middle of a dip of water which had iced over. Alison had accidentally wandered off the path in Shaw Park, Newbury.

A lady from Kingsclere was coming along the A339 towards Newbury and noticed Alison in the middle of the dip with her dog nearby. She drove round as quickly as possible to Shaw Social Club and ran towards Alison (who had been rescued by another driver already). Alison so wants to thank this lovely lady whom she knows lives in Kingsclere for her concern, kindness and effort.

Vanessa Martin

Nature Notes

As I write, it has been dry for many days and the gentle gusts that stir the papery leaves of last year give a strange autumnal feel to this late winter month.



A crisp, sunny day is a merciful relief during this harsh season but for me, there is a special joy in the milder, duller days that feel as though we are sealed beneath a sleepy, pewter sky that lacks the energy to bear the glaring sun. Though I fancy myself as a romantic Brontë-esque figure, striding defiantly across open country in the face of winter's vicious winds, the reality is they bite and drag on my nerves like a thorny bramble. These quieter days encourage peace, reflection and, hopefully, gratitude.

Walking my dog out on the exposed country pathways, even the tiniest leaves are still. Sounds are softened but clear as a pen scratching on fresh paper. Every crunch and snap echoes off the listening land. The rattle of a woodpecker travels far in the silent woods. I feel the earth has today decided to coddle and cosset me against the harsher winds of winter and I willingly submit.

Out past the cemetery I am stopped in my tracks by the sight of a hawk buoyant on the stationary air, who "*Effortlessly at height hangs his still eye*"* like Cathy out on the heath, fixed and staring as the air trembles around them.

Snowdrops are rising at the foot of lovely old oaks. Some only just pushing out their drop-pearled buds, such a bright white set against the muted, earthy tones of winter, they make me think of glow-worms in a dusky marsh. What a comfort these brave flowers are, in a season where anything delicate seems foolish. At The Vyne, I am delighted to see bunches of snowdrops in full bloom and wet with dew, hellebores emerging and pink cyclamen vivacious among the avenue of dark and solemn lime trees.

James Allen, in the 1870s, was the first person to breed snowdrops from the wild. His home was near Wells where we have recently moved from and where they celebrate his legacy by planting bulbs in public places.

Perhaps next year my little girl and I will plant some spring bulbs on the green space beneath the wonderful oak tree opposite our house.



This week, I spot a female grey wagtail dipping in the shallows of the brook. The flash of yellow breast amid her grey body is, to me, a sign of hope – a glimpse of the colours of spring, just around the corner.

Lydia Harley-Tomlinson

*Extract from 'The Hawk' by Ted Hughes

Kingsclere Village Bunnies Baby & Toddler Group

Where: The Village Club, George St

When: Tuesdays, 9:00am – 11:00am

Cost: £2.50 for 1st child (including snack for child and hot drink and biscuit for adult), 50p per extra child, £1 per extra adult



We have had a busy start to the year with lots of fun, games, and crafting! The Bunnies have really enjoyed our themed craft tables creating dragons for Chinese New Year as well as Valentine's paintings. Starting Tuesday, March 7th we will be hosting a swap table on the first Tuesday of every month – please bring along baby items, clothes and toys to these sessions.

We are a very friendly selection of mums, dads, grandparents and childminders with children from tiny babies to energetic toddlers and we love welcoming new visitors to our play sessions. We enjoy both indoor and outdoor play with plenty of toys and singing time too. Thank you as always to Swan Street Stores for their continued support of a weekly donation of fresh fruit snacks for the bunnies. For information visit our Facebook page, or regular visitors can join our WhatsApp group for weekly updates.

Tess Watkins 07905 624679



Community Organisations Join in the Kingsclere Coronation Celebrations

Local organisations are invited to apply for a Community Stall as part of the Kingsclere Coronation Celebrations. The main event will be a big village party at the Fieldgate Centre on the afternoon/evening of **Saturday 6th May**. You can use your stall for fundraising, volunteer recruitment, a food stall, funfair games, or in any way you like in line with the Coronation themes of community and volunteering.

To take part please complete the form on the KPC website:

Kingsclere-pc.org.uk

Application deadline is 31st March (T&Cs apply)

Kingsclere CE Primary School



Another busy half-term has flown by and many exciting activities have taken place. Our Key Stage 2 Choir performed in the Young Voices Concert at the O2 in London. They performed with beatboxers, sang 'Proud' with Heather Small and performed a variety of songs ranging from Nile Rodger's disco songs to traditional songs from the British Isles. A live band accompanied the children and the event was absolutely fabulous! We are very proud of all the children who had learnt the songs in preparation for the event and for their confident performances.

Our PTA (Friends of Kingsclere CE Primary School) ran Valentine Discos for the children which were well attended. The donations earned from the events have gone towards our library refurbishment project so we can further develop the library space providing indoor and outdoor reading spaces for children to enjoy reading.

We continue to treasure our partnership with Kyankowe (our partner school in Africa) to support our children in learning about another culture and how to be a global neighbour. Recently the Revd. Canon Dodie Marsden flew an alphabet book Year 6 had made about the UK to Kyankowe. We are also looking forward to receiving a book made by the children in Kyankowe which is going to be about Uganda. Recently our Year 1 and 2 have also been working on an enquiry project considering what life is like for our friends in Mityana, Uganda, compared to the UK. The children enjoyed exploring the many questions they had about Mityana with their peers, teacher and parents/carers.

Just before half term, as part of children's learning for 'Children's Mental Health Week', pupils took part in a variety of activities to support their well-being. Supporting children's mental health remains a key priority.

We are very proud of our Speed Stackers in Key Stage 1 and Key Stage 2 who represented our school and competed against other local primary schools. The children showed excellent teamwork and resilience in each part of the competition – well done to all the children involved!

We held a Reading and Phonics event for our parents/carers to share children's learning within these areas of the curriculum. If you have any free time available and would like to volunteer to hear children read for an hour or so during an afternoon, we would be very grateful to hear from you. Please contact me via the school office for further details:

adminoffice@kingsclere.hants.sch.uk

Mrs Jo Messenger, Acting Headteacher



Musical Allsorts

A PICK'N MIX OF SPRINGTIME DELIGHTS

Sunday 26th March 2023 4 - 5.30 pm
 Tickets £10, includes afternoon tea, children free
 The Fieldgate Centre, Kingsclere, RG20 5SQ



Kingsclere Singers

... and guests

Follow **kingscleresingers** on Facebook
www.kingsclere-singers.co.uk

u3a learn,
laugh,
live
Overton and district



Lucy Houston ~ The Lady who Saved the Nation

When Lucy Houston died on 29th December 1936, so ended the life of one of Britain's wealthiest, most powerful, steadfastly passionate, charismatic, eccentric, militant, forward-thinking political activist, campaigner, publicist, philanthropist, socialite, suffragist and romantic of her time.

Yet today she has all but disappeared into obscurity, largely forgotten or unknown by the world she helped to save.

Join us for this fascinating talk from Colin Van Geffen, on
**Wednesday 15th March at 10 a.m. St Mary's Hall,
 Overton**

Free to members - Non-members £3 on the door



Kingsclere Charities

Applications are invited from residents of the Parishes of Kingsclere and Ashford Hill with Headley regardless of means. Please contact the Clerk for an application form for the Welfare or Education and Apprentice charities.

The Welfare Charity Registration No. 237218

Provides assistance that cannot be provided by the NHS or Social Services.

Grants are given towards:

1. Motorised wheelchairs and mobility scooters.
2. Stairlifts including installation costs.
3. Medical equipment such as nebulisers.
4. Various aids that make life easier for sick and less mobile residents.
5. Travel costs to and from hospital.

The Education and Apprentice Charities Registration Nos. 307212 and 307083

Provides benefits not normally provided by the Local Education Authority to schools in both Parishes.

It also provides grants towards the cost of books, travel, stationery and specialist clothing to students resident in Kingsclere, Ashford Hill and Headley. Students must be between 16 and 25 years of age and attending sixth forms, colleges or universities.

The Alms houses Charity No. 236411

There are two Alms houses in Kingsclere and ten in Headley. When a vacancy occurs, it will be advertised in both Parishes.

The Trustees will meet on the following dates in 2023 to review applications.

16th February	20th April	15th June
21 September	16th November	

These applications must be received two weeks previous to these meetings.

Information and application forms can be found at:

www.kingsclerecharities.org

The Clerk, Mrs Jan Pearce kingsclerecharities@iname.com 01635 269184



Could you be a Trustee for Home-Start?

The Trustee Board meets 6 times a year and is responsible for strategy and governance of this amazing Charity! You will be supporting Home-Start staff and volunteers to make a difference for local families with young children.

If you have a background in IT, Marketing or Early Years we'd love to hear from you!

Tel: 01256 325793 Email: info@homestart-nwhampshire.org.uk

Website: www.homestart-nwhampshire.org.uk

BECAUSE CHILDHOOD CAN'T WAIT!

THE KINGSCLERE TOWER DIRECTORY

POLICE, FIRE or AMBULANCE

Police Enquiries/Information

Emergency 999

non Emergency 101

Kingsclere Health Centre:

01635 296000

North Hampshire Hospital, Basingstoke

01256 473202

Parish Council: 37 George Street (see page 2)

01635 298634

Kingsclere Charities Clerk: Jan Pearce

01635 269184

kingsclerecharities@iname.com

Dial-a-Ride

01256 462101

CHURCH CONTACTS

St. MARY'S CHURCH:

Vicar TBA

Church Warden:

Administrator:

Emma Rivers

01635 299528

administrator@stmaryskingsclere.co.uk

07422 687125

METHODIST CHURCH:

07889 905753

Minister: Rev Rachel Borgars

Rachel.Borgars@methodist.org.uk

01256 895878

Secretary & Hire of Hall Jeanette Billington

01635 297585

ROMAN CATHOLIC: Rev Patrick Tansey

0118 9814572

tadley@portsmouthdiocese.org.uk

Bas & Deane 01256 844844

Swan Street P O 01635 297035

Buses 0345 8101000

Vet 01635 297557 or 40565

Trains 0845 748 4950

Dentist 01635 299981

Gas Emerg. 0800 111999

Age Concern Local Agent 0800 3287154

Chemist 01635 298419

Watership Down Health 01635 296000

Kingsclere Library 01635 297464

BOROUGH COUNCILLORS

Ken Rhatigan 07850 530319

cllr.ken.rhatigan@basingstoke.gov.uk

Stuart Frost 07961 265719

cllr.Stuart.Frost@basingstoke.gov.uk

Kerry Morrow 07422 651172

cllr.Kerry.Morrow@basingstoke.gov.uk

COUNTY COUNCILLOR

Tom Thacker 07712 695468

tom.thacker@hants.gov.uk

MP for N.W. Hampshire:

Kit Malthouse 01264 401401

kit.malthouse.mp@parliament.uk

2, Church Close, Andover, SP10 1DP

There is a more comprehensive list of local contact numbers on the Parish Council website. Go to www.kingsclere-pc.org.uk/directory