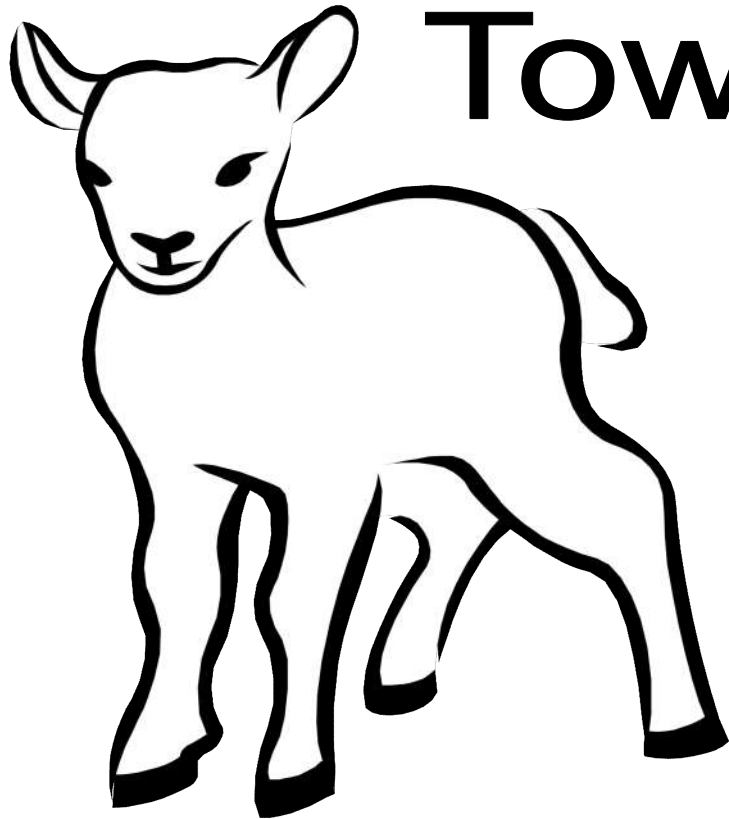


# The Kingsclere Tower



May 2019

Your Village Magazine

# T The Kingsclere Tower

EDITORS: Sarah Hewitt, Nicki Lee and Mike Stokoe  
DISTRIBUTION: Brian Elborn  
ADVERTISING: Les Wallace, Jada, Union Lane  
ASSEMBLY: Andrew Kitch  
PRINTERS: Kingsclere Design & Print Ltd  
LAYOUT/COVER: Mike Stokoe

☎298704  
☎298794  
☎299743

Spring has slowly unfolded before us during the last few weeks. As I write, the occasional caravan is passing by the house on the way to some Easter holiday destination.

Rod and Diana on page 10 write about some of the signs of the burgeoning summer amongst the plants and bird-life in the countryside. It is good to feel the warmth restored and to see the renewal of our garden plants and flowers. At the same time we have been shocked by the sight of Notre Dame cathedral so nearly destroyed by fire. Both nature and our national heritage need to be preserved. As we enjoy walking around the village listening to the bird song and enjoying the hedgerows in bloom we should be grateful for our own examples of historical survival in the panorama of ancient houses and churches in our own village of Kingsclere.

Interestingly, there is a talk in Overton on Hampshire churches and the Churches' Conservation Trust by Dr. Francis Hurd for the U3A on the 15th May (see p. 23). We should also be grateful for the restoration of St Mary's helped by FOSM (see p.3) and others. Andrew Kitch writes about the proposed reordering of St. Mary's interior on page 15.

**The Editor**

Neither the Editor, nor the Management Committee accept responsibility for the opinions expressed or the goods and services advertised in the Kingsclere Tower.

### To all "Tower" Contributors

Copy for **June** to the Editor at 3 Blue Meadow, Garrett Close.  
or [kingscleretower@gmail.com](mailto:kingscleretower@gmail.com)  
**NOT LATER THAN 12th May.**

**Will ALL contributors please include full name  
& home phone number/e-mail address.**

## KINGSCLERE PARISH COUNCIL

**Chairman:** Cllr John Sawyer (297221)  
**Clerk:** Louise Porton (298634)  
**email:** clerk@kingsclere-pc.org.uk  
**Office:** 37 George Street, Kingsclere RG20 5NH  
**Public Opening:** Mon & Wed 9:30-11:30am.



**GREAT BRITISH SPRING CLEAN** – The Parish Council would like to say a huge thank you to all the wonderful volunteers who helped out in the Great British Spring Clean Kingsclere on Saturday 30th March. Over forty people ventured far and wide across the village picking up litter. Six bags of recycling (glass/plastic bottles, tin cans) were sorted and these, along with all the other bags of rubbish, were disposed of correctly. Notable items discovered were 3 hub caps, a camp chair, a push chair and a traffic cone!

Volunteers found very little rubbish in the centre of the village due to the fantastic work of our Litter Warden but we were amazed at how much was collected from the outer reaches. We feel this was a very successful event and hope to repeat something similar in the future.

**ELECTION 2019 RESULTS** – Notice of uncontested election for the Parish Council was received on 3<sup>rd</sup> April 2019. The persons whose names appear below were duly elected Parish Councillors for Kingsclere.

ADAMS, Sue  
 BOWES, Ian  
 FAREY, Mick  
 MUSSETT, Clive  
 PEACH, Nicki  
 PEACH, Ray  
 PRICE, Adam  
 SAWYER, Fiona  
 SAWYER, John.

**COMMUNITY BUS ROUTE 56** – The Route 56 bus service to Sainsburys, Tadley, provided by Basingstoke Community Transport is still running. Kingsclere Parish Council have kindly agreed to subsidise the service for a further two months until 31<sup>st</sup> May 2019. Please use this service or it will be necessary for it to be cancelled.

## GREEN WHEELY BINS & GLASS RECYCLING

The collections dates are 8<sup>th</sup> and 22<sup>nd</sup> May 2019.

**NEXT PARISH COUNCIL MEETING** – will be at 7.30pm on Monday 20<sup>th</sup> May 2019, in the Village Club, (unless otherwise notified). We welcome the attendance of all parishioners at our meetings and anyone who wishes to raise any matters of concern will be given the opportunity to do so.

## Friends of St Mary's Kingsclere

After the rather uncertain weather last month, we hope for solid sunshine for our combined FOSM and Kingsclere Gardening Association **Plant Sale in St Mary's Churchyard on Saturday 11th May, opening at 10.00am.** As usual, we'll be offering a wide range of good quality plants at reasonable prices, including annual and perennial flowering plants and many vegetables. Do come to stock up your garden for the Summer.




You will see from the flyer enclosed with this issue details of our **Art from the Attic Sale** on the weekend of **15th & 16th June**. This is a new venture for us and promises to be very exciting. We already have indications of many people putting in pictures, and you too can both sell and buy. On the basis of what one person's discarding is another's treasure, at least come and see --- there's no charge for looking!


**Peter Turner, Chairman**

**200 200 200 200 200 200 200 200 200 200 200 200 200 200 200**

**Entries drawn first week of each month, various village venues.  
 St Mary's 200 Club Winner April 2019, no 42, Tom Sneyd**

The Parish website [www.kingsclere-pc.org.uk](http://www.kingsclere-pc.org.uk)

 @kingsclerepc

 [facebook.com/KingsclereParishCouncil](https://facebook.com/KingsclereParishCouncil)

## Ready to Play!



Last August we organised a very successful and well attended Play Day which was free entry thanks to a grant from Basingstoke & Deane Borough Council.

This year we are intending to repeat the event on Wednesday 7<sup>th</sup> August and we hope also to run weekly children's play sessions during the school summer holidays. The activities for these events depend on a mix of paid play leaders and volunteers to help with supervision etc. If you are able to help, even for just an hour or two on the day, please contact the Centre office. If your employer participates in Employer Supported Volunteering you might consider this as an example of worthwhile local volunteering.

A huge "thank you" goes to our social media volunteer, Ollie Martin ([www.understoodmedia.co.uk](http://www.understoodmedia.co.uk)), who has done a superb job promoting the centre. The baton must now be passed on and we are able to offer the opportunity to someone new. If you can lend us your skills (from home) to publicise what KCA does through our facebook page and website, then please get in touch.

Public events for your calendar in the next few weeks:

May	2 <sup>nd</sup>	Polling Station - Local Elections
	5 <sup>th</sup>	Ceroc Workshop
	23 <sup>rd</sup>	Polling Station - European Elections
	25 <sup>th</sup>	Ceroc Freestyle
June	1 <sup>st</sup>	Living Paintings Event
	8 <sup>th</sup>	60, 70s, 80s Disco
	22 <sup>nd</sup>	Kingsclere Youth Football Club Awards

For more info. contact:

website: [www.thefieldgatecentre.co.uk](http://www.thefieldgatecentre.co.uk)

tel: 01635 298497

email: [fieldgatecentre@btconnect.com](mailto:fieldgatecentre@btconnect.com)

## Kingsclere Village Bunnies Baby and Toddler Group



Welcome! You do not need to have had your baby to join us – come along to as many sessions as you want to before his or her arrival. Once your baby is here, we have a protected baby area with bouncy chairs, rugs and baby toys for them to use as well as toys and activities, both indoor and outdoor, for older babies and toddlers.

We would love to expand our group with new friends and we promise to make you feel welcome and offer any support you may need.

Keep an eye on our Bunnies Facebook site for regular updates – as well as our local buying and selling site "Kingsclere Bunnies Preloved" where local mums often have bargains to pass on.

**Where:** The Village Club, George St

**When:** every Tuesday, 9am-11am

**Cost:** first visit free. After that, £1 for bumps and unweaned babies. £2 for first child (including snack donated by Swan St Stores) and 50p for additional children.

[villagebunniestoddlergroup@gmail.com](mailto:villagebunniestoddlergroup@gmail.com)



A few ex-Brownie & Guide leaders in Kingsclere are considering setting up a Kingsclere Trefoil Guild. The Trefoil Guild is a branch of Girlguiding but has a separate identity.

Membership offers opportunities to meet with friends, develop interests, tackle new challenges, enjoy outings and occasionally support Girlguiding and local charitable events. Membership is open to anyone aged 18 years and above who have been members of Girlguiding or The Scout Association, or non-members who subscribe to the aims and principles of both organisations. Meetings are monthly – venue to be decided.

What does a typical Trefoil Guild programme look like? Local members decide on their programme which may involve getting out and about. For others, the focus lies closer to home, with local activities and support for community events. Opportunities are endless as Guilds are connected to two of the world's largest organisations, Guiding and Scouting.

For more information, see <http://www.trefoilguild.co.uk/HOME> or contact Sue Adams [sueadams@madasafish.com](mailto:sueadams@madasafish.com) 01635 299242 or 07767695540.



## Kingsclere Rugby Club



Summertime is just around the corner so come along and join us for Touch Rugby which starts at the Fieldgate Centre on Wednesday 29<sup>th</sup> May at 7.00pm for six weeks.

Touch Rugby is a minimal contact and thoroughly enjoyable version of the game. This tournament is open to both men and women over 14 years – no experience needed so simply turn up and join in.

Cost is £1 per player per session and the most successful player over the six weeks will win a pair of England International Tickets.

For further information please email [Captain@kingsclererfc.co.uk](mailto:Captain@kingsclererfc.co.uk) or [Secretary@kingsclererfc.co.uk](mailto:Secretary@kingsclererfc.co.uk).

Also see our Facebook page: Kingsclere RFC and website: <http://www.kingsclererfc.co.uk>

## Kingsclere Bowling Club

### OPEN EVENINGS REMINDER



We are holding open evenings every Tuesday in May 6.30pm onwards, absolutely **FREE**.

Bowls and tuition will be provided. We just ask that you wear flat soled shoes or trainers.

Bowls is a very enjoyable and social game. It can be played by all ages, abilities and sexes.

New members would be very welcome with membership fees available from only £20 per annum.

Please come along to any or all of these Tuesday evening taster sessions in May and give bowls a try (and possibly have a **FREE** month's trial). Also sample and enjoy our club's facilities.

If you are unable to attend any open evenings and would like further information about membership or to arrange a convenient trial session, then please contact our Chairman Brian Watts on 0118 981 6892, email [brian-watts@btconnect.com](mailto:brian-watts@btconnect.com) or visit [www.kingsclerebowlingclub.co.uk](http://www.kingsclerebowlingclub.co.uk).

Kingsclere Bowling Club, William Holding Field, Ashford Hill Road, Kingsclere RG20 5NY

## Kingsclere Community Library



**Remember, your local library is FREE!**

There is something for everyone – free library card, borrow books, books online, audio books, children's books, etc. Use of our library computer is FREE and you can use some websites such as Which? and genealogy websites for free also.

### Rhymetime with Rita:

On the second Tuesday of every month, 2.30pm

### NEW! Borrow a FREE Jigsaw Puzzle

Stop in to borrow a puzzle, return it when you are finished, with no time limits.

Opening hours: Tues & Thurs 1 – 5.30pm, Saturdays 9.30am – 2pm

## Kingsclere Village Club



We would like to thank Howe and Son for their generous grant to support our WW1 style victory tea party which was part of the village programme to commemorate 100 years since the end of the First World War.

Looking ahead, save the date - Yoga Festival first weekend in August, more details to follow.

Calling all regular hirers! If you have not received an invitation to our Open Day on 15th June and are interested in taking part, please contact [Helen.events@kingsclerevillageclub.co.uk](mailto:Helen.events@kingsclerevillageclub.co.uk) asap.

You are also invited to present a short report at our forthcoming AGM on 4th July, Please notify [chairman@kingsclerevillageclub.co.uk](mailto:chairman@kingsclerevillageclub.co.uk) if you would like to participate.

**Helen Andrew 07887521359**





## Kingsclere Film Club

*Second Saturday of the month at  
7.30pm (doors open 7.00pm) at  
the Village Club, George Street.*

**Saturday, 11 May, 2019**

### North by Northwest

*(1959 – Adventure/Thriller - 136min – Cert A)*

A hapless New York ad executive is mistaken for a government agent by foreign spies The annual classic Hitchcock.  
Stars Cary Grant and James Mason.

Next month: Saturday, 8 June – *The Hundred Foot Journey* (2014)

*Kingsclere Film Club* welcomes guests at £7.50, subject to space.

New members welcome at any time.

For further information call John Sawyer (Chairman) 297221  
or Diana Tait (Membership Sec) 298494

## St Mary's Church Fete

### Having a Spring Clean?

Don't throw away your unwanted items, put them aside  
for the **St Mary's Church Fete**. Our ever-popular bric-a-brac  
and accessories stalls are looking for good quality items  
to sell at the fete on

**August 26<sup>th</sup> Bank Holiday Monday.**

Please hold on to any items you have and bring them to the church  
in August (date TBC). Thank you!

### Competition Time!

We would like to host one or more competitions as part of our fete activities.  
Suggestions so far include painting, baking and crafts. We need individuals  
or groups to volunteer to run a competition and donate prizes for the winners  
at the fete on August 26<sup>th</sup> Bank Holiday Monday. Any suggestions very  
welcome. Thank you!

**Contact the Fete Committee:**

**Debbie Power 01635 291247 or Maggy Wallace 01635 298794**

## Kingsclere Twinning Association



### Dates for your Diary

The **Annual Duck Race** will be taking place on **Saturday 15 June** after the  
Kingsclere Primary School Summer Fair.

Back by popular demand - **Call My Bluff Wine Tasting** at the Village Club  
on **Saturday 6<sup>th</sup> July**.

We always welcome new members. Why not consider joining? Family  
membership is £5 per year and includes reduced admission prices to most of  
our events, free monthly French conversation class (for all abilities: from  
beginner to conversational level), and the opportunity to visit **Cormicy** in the  
beautiful **Champagne** region of France.

Please contact [Kingscleretwinning@yahoo.co.uk](mailto:Kingscleretwinning@yahoo.co.uk) or Sue Watson on 01635  
298940 for any further information.

## openstudios in Kingsclere

Open studios exists to promote art within the local community. It is a time when artists  
open their doors to the public, offering a glimpse of the magic and inspiration that  
goes into creating a unique work of art. While it is a fantastic opportunity to buy  
something special, it is also about connections and discovery.

Your local artists invite **you** to visit their studios this May.



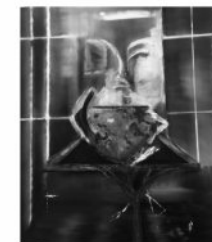
21 Arlene Fleming



24 Daisy Freestone



25 Amanda Bates



49 Yvonne de Savigny

Please see the **Open Studios Directory** for full details,  
including opening times. You can pick up a free copy of the  
Directory from Kingsclere Community Library and other key  
locations or access it online at [www.open-studios.org.uk](http://www.open-studios.org.uk)

Admission to all studios and exhibitions is FREE

**openstudios**  
**2019**

West Berkshire & North Hampshire

## Nature Notes

There is a lane that we frequently use with a marshy bank and from March onwards we slow down to see if fritillaries are going to emerge, they did and are now in full flower (10 April). Their large, drooping bells are purple-ish, with markings said to be like snake skin, hence their popular name and are carried on slender stems roughly a foot tall, the bells dance in a breeze. White flowers are also present. Fritillaries favour marshy ground which is why their populations have declined with the shrinking of damp pastures, their distribution would have been at its height when the water meadow system flourished. Large numbers flower in meadows by the banks of The Loddon at Stratfield Saye.

Blackthorn blossom has been magnificent this year lightening up the winter hedges and now providing bursts of snow white as a foil to the exuberance of spring green.

At a time when rooks' nests are more obvious via the sometimes noisy presence of the owners we noticed a rather exceptional nest. One of a group of nine nests, this one is a veritable tower being at least three standard rook nests tall and appears to have owners. Why the birds built such a large nest is a mystery. While their cousins, the magpies, make big domed structures they do not normally associate with rooks.

The prospective tenant of a nest box – a blue tit – was seen hanging out of the entrance and gripping the edge and seeming as though wedged. A great tit in a nearby shrub appeared to have ideas of ownership getting close and calling persistently. Only when the aggressor left did the homeowner fly off.

**Diana Tait and Rod Eldred**



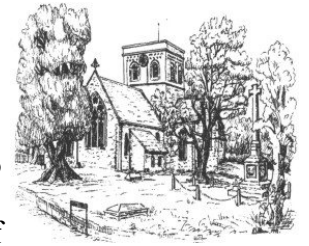
## Reflections

Who knows...in fact, God only knows (and I do mean that)...where we'll be with the Brexit story by the time you read this article but one of the things that you might say about both sides (if there are only two?) is that they are being quite shameless in their attempts at pushing their agendas through in the face of what seems to be an impasse.

'Shamelessness' is something which is encouraged by Jesus as he teaches the Lord's Prayer. In the book of Luke in the Bible, Jesus tells a parable about a friend at midnight (Luke 11:1-13). He says that suppose you've had a surprise visitor who has come a long way and they arrive late and you have nothing to give them to eat. So you go to another friend and knock on his door and he leans out of a window and you explain your situation. The friend says "Please don't bother me, my children are in bed, everything is locked up, I just can't get you anything". Jesus says that, although he may not give you anything because of being a friend, he will give you something because of your shameless audacity in asking in that way and at that time.

The point is that if even tired, stubborn, lazy friends will give us what we ask for, how much more will God give us what we ask of Him. But He'll only give us what is good for us. Jesus talks about how if a son asks his father for a fish, he wouldn't give him a snake but a fish. And God, who is the Father of all who put their trust in Jesus, will give us the good things we ask for, as long as they're really good things for us – He wants what's best for us.

So keep on praying, whether it be for Brexit or for your family or work or whatever. And can I urge you to be specific – ask for things that you'll be able to see answered or not. I'd love to hear about some of those answers to prayer – please do let me know. And please also let me know if you feel your prayers are unanswered – I'd love to talk about it. But keep on shamelessly asking like the person in the parable because God loves each of one of us.



**Blessings,**

**Ben.**

### CAMARADERIE IN JUNE

There will be a meeting on

**Wednesday 5th June**

in the **Methodist Schoolroom at 2.30pm**

You are invited for entertainment and tea, sandwiches and cakes

£2.00 to include a free raffle

**ALL WELCOME**

## Methodist Notes



### May Services

Sunday 5th Local Arrangement Morning Worship  
 Sunday 12th Rosie Greenhalgh Morning Worship  
 Sunday 19th Rev. David Read Holy Communion  
 Sunday 26th Rev. Rachel Borgars Morning Worship

All Services begin at 10am

### WILLOW WORKSHOP

#### Saturday 18th May 2019

Kingsclere Methodist Church from 10am until 3pm  
 Come and learn the ancient art of willow weaving and make an Irish egg basket from willow which is grown locally. The cost is £40 per person and includes tuition, all materials and refreshments will be available throughout the workshop.

This workshop is suitable for beginners.

All enquiries to Laura Willcock. 07905256966

e mail [laura.willcock@hotmail.com](mailto:laura.willcock@hotmail.com)

Book early to avoid disappointment as places are limited.

## CHURCH CONTACTS

### St. MARY'S CHURCH:

**Vicar** Rev Ben Read, The Vicarage, Foxs Lane 01635 298471

### Church Wardens:

Andrew Kitch [andrewkitch16@gmail.com](mailto:andrewkitch16@gmail.com) 01635 299743

Sarah Mussett [sarah.mussett@hotmail.co.uk](mailto:sarah.mussett@hotmail.co.uk) 01635 291900

**Administrator:** Emma Rivers

[administrator@stmaryskingsclere.org.uk](mailto:administrator@stmaryskingsclere.org.uk) 07790 934972

### METHODIST CHURCH:

**Chief Steward** Wendy Morgan 297538

**Secretary & Hire of Hall** Jeanette Billington 297585

**ROMAN CATHOLIC:** Rev Patrick Tansey 0118 981 4572

[tadley@portsmouthdiocese.org.uk](mailto:tadley@portsmouthdiocese.org.uk)

## Services in the parishes of Kingsclere and Ashford Hill with Headley May 2019

Sunday 5 <sup>th</sup> May Easter 3	<b>8am</b>	Holy Communion – St Paul's, Ashford Hill
	<b>9.15am</b>	Holy Communion with Junior Church St Mary's, Kingsclere (breakfast 8.45am)
Sunday 12 <sup>th</sup> May Easter 4	<b>8am</b>	Holy Communion – St Mary's, Kingsclere
	<b>9.15am</b>	Morning Worship with Junior Church St Mary's, Kingsclere (breakfast 8.45am)
	<b>11am</b>	Holy Communion – St Peter's, Headley
Sunday 19 <sup>th</sup> May Easter 5	<b>8am</b>	Holy Communion – St Peter's, Headley
	<b>9.15am</b>	All-Age Messy Worship St Mary's, Kingsclere (breakfast 8.45am)
	<b>11am</b>	Holy Communion – St Mary's, Kingsclere
Sunday 26 <sup>th</sup> May Easter 6	<b>8am</b>	Holy Communion – St Mary's, Kingsclere
	<b>9.15am</b>	Morning Worship with Junior Church St Mary's, Kingsclere (breakfast 8.45am)
	<b>11am</b>	Holy Communion – St Paul's, Ashford Hill
Thursday 30 <sup>th</sup> May Ascension Day	<b>7.30pm</b>	Ascension Day Service – St Peter's, Headley
Sunday 2 <sup>nd</sup> June Easter 7	<b>8am</b>	Holy Communion – St Paul's, Ashford Hill
	<b>9.15am</b>	Holy Communion with Junior Church St Mary's, Kingsclere (breakfast 8.45am)

**ABC, our service for pre-school children and their carers will take place in St. Mary's Church on 20<sup>th</sup> May at 9.30am**

## St Mary's Kingsclere Garden of Remembrance

In the interests of keeping the Garden of Remembrance in St Mary's Churchyard neat, tidy and safe and making it a fitting resting place, there are regulations set by the church council which were last updated in September 2017.

A copy of these regulations is available on the noticeboard inside the main doors of the church, or by contacting Emma Rivers, Administrator, on [administrator@stmaryskingsclere.co.uk](mailto:administrator@stmaryskingsclere.co.uk) or 07790934972.

However there are some plots with flowers and ornaments which are more difficult to maintain than others. During June we plan to remove the items which do not adhere to the regulations but wanted to give families some notice in case they wish to remove and keep any items themselves.

If there are any queries relating to the Garden of Remembrance regulations please contact Emma as above.



## The Bus of Hope

The Bus will be in Kingsclere on 16th May.

We'll be at the Holding Field (Bowls Club) car park from 6.45 to 8.30pm.

Upstairs - crafts and activities for children up to age 12.

Downstairs - somewhere for young people to chill and chat.

Luxury hot chocolate for everyone.

Future date - 13th June

St Mary's Church



## Changes to St Mary's Church Interior

April/May 2019

How are the plans progressing on the 'reordering' of the interior of St Mary's?

The team have been hard at work and we have had several meetings with our architect to progress various ideas. We have now gone from four possible 'ideas' to two more specific schemes which still need a lot of input and tuning to get closer to that final scheme.

A lot of research and looking into the background and history of our church has resulted in plenty of information. I have even been sent pictures of a couple who were married in St Mary's in 1979 which clearly show how the layout of the seating and pews has altered dramatically even in the last 40 years.

With a growing number of regular worshippers to our church it is clear that we need to allow for more seating. We also need to make sure it is flexible and meets our aims to make it a useful community building fit for purpose.

We have agreed that it needs:

- More toilets, including accessible facilities.
- More meeting spaces for groups and societies to use.
- An updated and modern kitchen.

Our latest plans were on display and open for discussion at our meeting held in the Kingsmill Room on Monday 1<sup>st</sup> April where over 50 people were present and I and the architect were able to answer questions about our plans.

A lively Q & A session brought forth some relevant suggestions which we will discuss at the next reordering team meeting and develop with the Church architect.

In subsequent meetings we will discuss with the architect to see what those new amendments look like when put into the revised floor plan.

I have also asked for the Church department responsible for changes to the building to come to St Mary's and look at our plans and help us to make not only the right decisions for Kingsclere but those which take into account what we must comply with when making change to such an historic building.

We are moving the project forward slowly towards a final plan which we will want to share with you all.

**Andrew Kitch (Church Warden)**





## Lighting up St. Mary's



### May

- 1st For Chris, forever in our hearts. With all our love, Sue, Liz, Guy, Maddy and Lydia.
- 4th Loving memories of Moira on her birthday.
- 26th Celebrating our Golden Wedding Anniversary - John and Sandy Liddeatt
- 27th Loving memories of Joyce Frith our dear Mother, Grandmother and Great Grandmother.
- 31st Remembering Hazel Soper, a dear Mum, Grandma and Great Grandma on her birthday.

To book please contact Andy and Sarah Bates, Brook House, Popes Hill, Kingsclere RG20 5SJ. 01635 299710. Online [www.clerewoodlands.org.uk](http://www.clerewoodlands.org.uk) £12 per evening, block booking discounts. Cheques payable to St Mary's Kingsclere PCC, gift aid welcome. Deadline for June Tower is May 10th.

## Kingsclere Gardening Association



Our first outing of the year is on May 4th to Wisley where as well as the gardens there is a Craft and Plant Fayre with specialist nurseries selling their plants.

Entry is free only the coach fare to pay. No doubt leaving the square the usual time 9am or a little after.

On Saturday May 11th we will join with FOSM to hold a plant sale in the churchyard. We obviously hope that some of our members will be able to contribute plants for this sale. I have been asked to say that labelling is important. A description of plant regarding height and colour and even time of flowering would be helpful. Hopefully, many of you will come along to buy as well.

Our other outing is to Mathew Sopers Flytrap Nursery south of Winchester, full address later. This will be an evening outing by car. The cost of the evening is nothing to members and most likely £6.00 to others. Please book with Sylvia Pennington 01635 298880. This nursery is a leading grower of carnivorous plants. Mathew exhibits at all the leading shows.

**John Eckton 01256 850017**

## Kingsclere & Headley Woodlands WI

Village Club, 35 George Street, Kingsclere

1918 - 2018



Monthly Meeting: Wednesday 8 May.

As usual, there is NO Speaker or presentation booked for our May meeting - traditionally known as our **ANNUAL MEETING.**

*[For info only: This shortened version of the 'usual' AGM title separates all local (county-wide) WIs' annual business 'wrap-ups' from those of our 'mother-ship', Hampshire County WI Federation. To simplify: Only HCWI runs an Annual General Meeting!]*

Reports-back and forward planning will constitute the 'business of the day' together with the vital election of committee members for the coming year. This will be followed by an afternoon tea with cake. What better way to set the tone for a convivial get-together of members and any visitors who might wish to attend this meeting, as they might any other of our meetings. **We welcome visitors at just £2 per person.** And we always hope that after the first or second visit, our guests will wish to sign up as members!

### WI MEMBERS PLEASE NOTE:

Please make every effort to attend and cast your vote. The annual election process is vital to the well-being and good functioning of our Women's Institute.

Also: There is NO letter-clue for May. The new competition starts in June (next month) and monthly letter-clues will be based on the word 'RESOLUTION'. Oh, yes!

**Nova Saunderson - 299570**

### **From the Registers of St Mary's**

**Baptism**

17<sup>th</sup> March

*We welcome you into the Lord's family*

Mylo Thomas

## Sandham Memorial Chapel

### Chapel Service

Wednesday 1 May 10.15am

Join us for one of our monthly chapel services conducted by our parish rector.



### Open Studios@Sandham

Saturday 4 May – Monday 27 May during regular opening hours.

Come and see ten different local artists' work. All part of West Berkshire Open Studios in this very special setting. Talk to the artists about their creations, see what has inspired them and perhaps buy something special too. This event is free

### Chapel Talks

Monday 13 May 11am-1pm

Listen to the story behind one of the most important 20th century artists, Sir Stanley Spencer and how his dream of a "Holy Box" came to fruition. Tickets £8, to book call 0344 249 1895

### Jewellery Workshop

Friday 31 May 2-4pm

Working with local artist Helen Mortimer and building on skills learnt in our introductory workshop you can create a handbag charm and toggle clasp bracelet. Tickets £25, to book call 0344 249 1895.

Adrian Speed

## SILCHESTER PARISH CHURCH MUSICAL EVENT

SATURDAY, 29th JUNE 2019

7.30pm

THE HURST SINGERS

(Director Elaine Cox)

present

SONGS FOR A SUMMER EVENING

Tickets £10 (children free)

to include glass of wine or soft drink

Ralph Atton (01189700825)

or Richard Fletcher (01189700633)

Proceeds to Church funds

## Kingsclere Heritage Association



On March 21st the Kingsclere Heritage Association were fortunate to enjoy a talk by Bob Clarke, local historian, entitled "From Grub Street to Fleet Street".

Bob told us many fascinating details about the development of newspapers over the centuries. He also left us with some cuttings about Kingsclere from previous centuries. Here are a few examples:

Mike Stokoe

Last Tuesday, at the Sessions held at Newbury, came on the Trial of Elizabeth Stevens, otherwise Dame Cryer, a noted Fortune-teller, for several Years past; being prosecuted by one Mondy, of the Parish of Kingsclere, for having charg'd him with robbing his Father of some Household Goods and a Gammon of Bacon, the Father upon losing those Things having applied to the said Fortune-teller for Information concerning them. She was tried by a Special Jury, and being found guilty, was sentenced to be imprisoned for twelve Months, and to stand four Times in the Pillory within the Time of her Imprisonment.

Whitehall Evening Post, 12 December 1758

Reading Dec. 29. Thursday evening, about five o'clock, as Mr. Flower, of Sandford-Farm, near Kingsclere, Hants, was returning from Newbury-market, he was attacked by two foot-pads, within half a mile of Kingsclere, and about the same distance from his house, who knocked him off his horse, and beat and bruised him very much with their sticks, and robbed him of 20 guineas and his watch, and then made off. The same evening two loitering fellows were taken up near Kingsclere, on suspicion of the robbery.

London Evening-Post 1 January 1765

Whereas ELIZABETH, the WIFE of BENJAMIN WIDMORE, of Kingsclere in the County of Southampton, hath eloped from her said Husband without any due Reason, and hath, or threatens to take up Goods or Money, and to render him chargeable; therefore this is to give Notice that the said Benjamin Widmore will not pay any Debts that shall be contracted by her, and whoever doth or shall entertain her be it at their Peril. Witness my Hand,

Benj. Widmore.

London Evening-Post 5 October 1731

Wives may have had no rights but they could still make their husbands suffer!!

**Your neighbourhood policing team includes:**  
**PC Martyn Evans PC Simon Denton**  
**PCSO John Dullingham**

### **Community Priorities**

The first of our current priorities is theft from motor vehicles. Over the last month we have been patrolling rural car parks. Our advice still stands. Avoid leaving property and valuables in your vehicle when you leave it unattended.

Only one case of theft from a motor vehicle was reported. On 16 March, a bag was stolen from the boot of a car at Sydmonton, in the Watership Down area. The other crime reported in a rural car park was criminal damage to a vehicle at Bear Hill, Kingsclere on the afternoon of 5 March. There was also an incident where property was stolen from a lorry that was parked overnight on the A34. Other areas have reported incidents where tools have been stolen from work vans overnight.

Criminal damage is the second priority. It remains low in the area. A vehicle was damaged whilst parked overnight on 2-3 March at Wigmore Road. We have received a report from the owner of a vehicle which was damaged caused by scratching the bodywork. The vehicle had been left in the vicinity of the railway station at Whitchurch. Over a three-week period, garage doors were damaged in Elm Grove, Kingsclere, probably in an effort to break in. If you store property in your garage, mark it with your postcode.

### **Kingsclere and Sherborne St John**

A charity box has been stolen from St Mary's Church at Kingsclere. This is the second incident where the charity box has been stolen. We have also had reports of youths smoking cannabis behind the church.

There have been several calls made to the police regarding rogue trading, which is usually for garden work and or building maintenance. Please avoid offering work to traders who attend your address if you have not researched the company involved. A way to avoid being a victim of this crime is to rely on recommendations from friends and family. If you would like a visit from your PCSO, email [John.Dullingham@hampshire.pnn.police.uk](mailto:John.Dullingham@hampshire.pnn.police.uk).

**To report crime or suspicious activity, call us on 101 or report it online by going to [www.hampshire.police.uk](http://www.hampshire.police.uk). You can also report it anonymously to Crime Stoppers instead of the police, on 0800 555111**



## **Volunteering Opportunity!**



Home-Start believes that children need a happy and secure childhood and that parents play the key role in giving their children a good start in life and helping them achieve their full potential.

Our 1:1 volunteers and groups help to support the parent/child relationships by offering non-judgemental support and friendship. The unique relationship which develops between a volunteer and a parent means our support can be exactly tailored to the needs of each family we visit. We need volunteers to support families in the Community.

YOU can make a difference to someone's life! Interested?

Contact us: Tel: 01256 325793

Email: [info@homestart-nwhampshire.org.uk](mailto:info@homestart-nwhampshire.org.uk)

Website: [www.homestart-nwhampshire.org.uk](http://www.homestart-nwhampshire.org.uk)

## **BARN DANCE- SATURDAY 18<sup>TH</sup> MAY 2019**

**7pm to 11:30pm**

Ploughmans served at 7:30pm

Music performed by The Jigalots

Home Farm Barn, Farleigh Wallop, RG25 2HX

(By kind permission of Viscount Lymington)

£20 per ticket incls. Ploughmans

(over 14's only)

Wine & Beer will be available to purchase

Ticket reservations:

[info@homestartnwhampshire.org.uk](mailto:info@homestartnwhampshire.org.uk)

01256 325793



## Newbury Spring Festival 2019

Tickets are now on sale for the Newbury Spring Festival 2019.

A host of artists and performers from the worlds of classical, jazz, world music, folk, ballet and cabaret will descend on Newbury from 11th to 25th May.



two weeks of  
world-class music

The Festival opens on 11 May with the BBC National Orchestra of Wales conducted by Xian Zhang and the young violinist Alexander Sitkovetsky playing the beautiful Brahms Violin Concerto. On the same night but opening the daily Corn Exchange programme is the BBC Big Band who will celebrate the 'Sound of Cinema'.

Other highlights include for the first time the Gabrieli Consort appearing at Holy Cross Church Ramsbury on 14 May and a return of celebrated choral group Tenebrae to Douai Abbey on 17 May. Following his sell-out lunchtime recital last year BBC New Generation artist Misha Mullov-Abbado returns with his young group for an evening performance of their unique style of jazz at the Corn Exchange on 17 May.



## HANNINGTON COUNTRY FAIR

**The only thing to do on June 23rd!**

Midway between Newbury and Basingstoke, our **Country Fair** starts at Noon and provides a full day of fun, great arena entertainment and over 80 sideshows & stalls. You'll fit it all in if you try hard!

And, if you are a dog owner, you could enter what visitors last time said was "the **Best Fun Dog Show** they'd been to" and it'll be even better this time!

Great prizes and lots of fun.

Entry on the day.

And this year we've added a **Rare Breed Sheep Show**.

So even more to see and do.

**Full information on our website [www.hanningtonfair.net](http://www.hanningtonfair.net)**

And facebook: [www.facebook.com/hanningtoncountryfair](https://www.facebook.com/hanningtoncountryfair)



## Overton and District U3A

**Do come to our next talk:**

### **Churches Conservation Trust Hampshire Churches**

**Dr Francis Hurd**



### *St. Nicholas Church Freefolk*

**The Churches Conservation Trust cares for redundant churches which are of unique historical, archaeological or architectural significance.**

**Wednesday 15th May -10.00am**

**St Mary's Hall, Overton.**

**Free to members – non-members £3 on the door.**



# **THE KINGSLERE TOWER DIRECTORY**

**Editor:** 3 Blue Meadow, Garrett Close.  
email: [kingscleretower@gmail.com](mailto:kingscleretower@gmail.com)

**Advertising:** Jada, Union Lane, Kingsclere ☎298794  
[leswatershipdown@hotmail.com](mailto:leswatershipdown@hotmail.com)

**POLICE, FIRE or AMBULANCE** **Emergency 999**

Police Enquiries/Information **non Emergency 101**

**Kingsclere Health Centre:** 296000

**North Hampshire Hospital, Basingstoke** 01256 473202

**Kingsclere & Ashford Hill with Headley Care Group:**

General Enquiries 01635 298794 *Transport only* 07880-658187

**Parish Council:** 37 George Street (see page 2) 298634

**Dial-a-Ride** 01256 462101

**Churches:** *see contact details within Church Pages inside*

Bas & Deane	01256 844844	Cub Scouts	298413
Buses	0345 8101000	Girl Guides	299875
Trains	0845 748 4950	Kingsclere Library	0300 555 1387
Gas Emerg.	0800 11999	Swan Street P O	297035
S.Electric	0845 770 8090	Vet	29557 or 40565
S.Water	0845 278 0845	Dentist	299981
Busy Bees	297576	Fieldgate Centre	298497
Chemist	298419	Village Club	297913

## **BOROUGH COUNCILLORS**

**Ken Rhatigan** 07850 530319 [cllr.ken.rhatigan@basingstoke.gov.uk](mailto:cllr.ken.rhatigan@basingstoke.gov.uk)

**Donald Sherlock** 01672 521247 [cllr.donald.sherlock@basingstoke.gov.uk](mailto:cllr.donald.sherlock@basingstoke.gov.uk)

## **COUNTY COUNCILLOR**

**Tom Thacker** 01264 738464 [tom.thacker@hants.gov.uk](mailto:tom.thacker@hants.gov.uk)

## **MP for N.W Hampshire:**

**Kit Malthouse** 01264 401401 [kit.malthouse.mp@parliament.uk](mailto:kit.malthouse.mp@parliament.uk)  
2, Church Close, Andover, SP10 1DP

**There is a more comprehensive list of local contact numbers on the Parish Council website. Go to [www.kingsclere-pc.org.uk/directory](http://www.kingsclere-pc.org.uk/directory)**